

Datasheet for ABIN7147931

anti-CLPTM1L antibody (AA 32-172)



[Go to Product page](#)

4 Images

Overview

Quantity:	100 µg
Target:	CLPTM1L
Binding Specificity:	AA 32-172
Reactivity:	Human
Host:	Rabbit
Clonality:	Polyclonal
Conjugate:	This CLPTM1L antibody is un-conjugated
Application:	ELISA, Western Blotting (WB), Immunohistochemistry (IHC), Immunofluorescence (IF)

Product Details

Immunogen:	Recombinant Human Cleft lip and palate transmembrane protein 1-like protein (32-172AA)
Isotype:	IgG
Cross-Reactivity:	Human
Purification:	>95%, Protein G purified

Target Details

Target:	CLPTM1L
Alternative Name:	CLPTM1L (CLPTM1L Products)
Background:	Background: Enhances cisplatin-mediated apoptosis, when overexpressed. Aliases: C130052I12Rik antibody, Cisplatin resistance related protein 9 antibody, Cisplatin

Target Details

resistance related protein CRR9p antibody, Cisplatin resistance-related protein 9 antibody, Cleft lip and palate transmembrane protein 1 like protein antibody, Cleft lip and palate transmembrane protein 1-like protein antibody, CLP1L_HUMAN antibody, CLPTM1 like antibody, CLPTM1 like protein antibody, CLPTM1-like protein antibody, CLPTM1L antibody, CRR9 antibody, CRR9p antibody, DKFZp666M1010 antibody, DKFZp761M2324 antibody, FLJ14400 antibody, FLJ32533 antibody, MGC36304 antibody, OTTHUMP00000220655 antibody, RGD1307896 antibody

UniProt: [Q96KA5](#)

Application Details

Application Notes: Recommended dilution: WB:1:500-1:5000, IHC:1:500-1:1000, IF:1:50-1:200,

Restrictions: For Research Use only

Handling

Format: Liquid

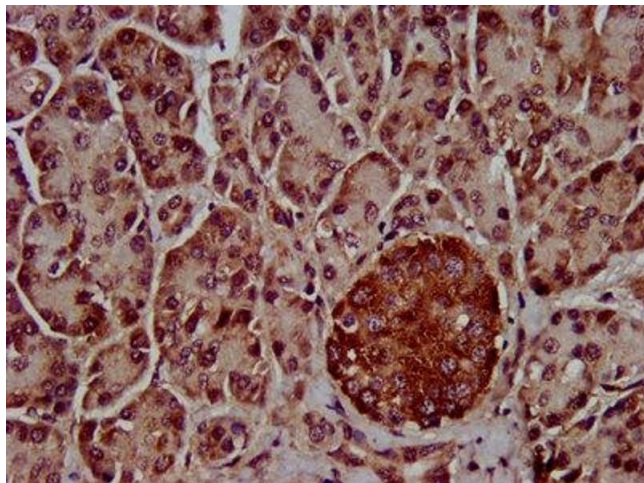
Buffer: Preservative: 0.03 % Proclin 300
Constituents: 50 % Glycerol, 0.01M PBS, pH 7.4

Preservative: ProClin

Precaution of Use: This product contains ProClin: a POISONOUS AND HAZARDOUS SUBSTANCE which should be handled by trained staff only.

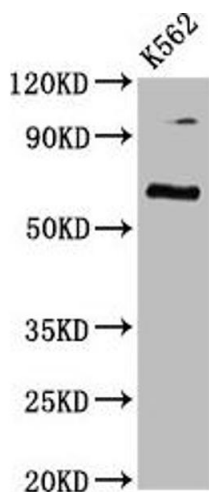
Storage: -20 °C, -80 °C

Storage Comment: Upon receipt, store at -20°C or -80°C. Avoid repeated freeze.



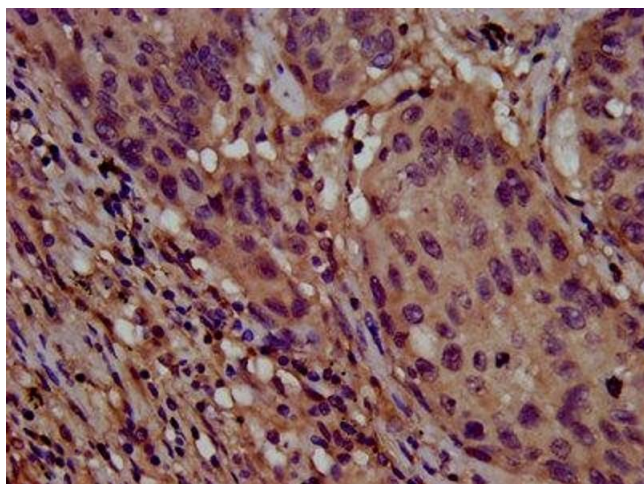
Immunohistochemistry

Image 1. IHC image of ABIN7147931 diluted at 1:800 and staining in paraffin-embedded human pancreatic tissue performed on a Leica Bond™ system. After dewaxing and hydration, antigen retrieval was mediated by high pressure in a citrate buffer (pH 6.0). Section was blocked with 10 % normal goat serum 30 min at RT. Then primary antibody (1 % BSA) was incubated at 4 °C overnight. The primary is detected by a biotinylated secondary antibody and visualized using an HRP conjugated SP system.



Western Blotting

Image 2. Western Blot Positive WB detected in: K562 whole cell lysate All lanes: CLPTM1L antibody at 3.7 µg/mL Secondary Goat polyclonal to rabbit IgG at 1/50000 dilution Predicted band size: 63, 59 kDa Observed band size: 63 kDa



Immunohistochemistry

Image 3. IHC image of ABIN7147931 diluted at 1:800 and staining in paraffin-embedded human lung cancer tissue performed on a Leica Bond™ system. After dewaxing and hydration, antigen retrieval was mediated by high pressure in a citrate buffer (pH 6.0). Section was blocked with 10 % normal goat serum 30 min at RT. Then primary antibody (1 % BSA) was incubated at 4 °C overnight. The primary is detected by a biotinylated secondary antibody and visualized using an HRP conjugated SP system.

Please check the [product details page](#) for more images. Overall 4 images are available for ABIN7147931.