



[Go to Product page](#)

Datasheet for ABIN7147940

anti-CIPC/KIAA1737 antibody (AA 1-399)

3 Images

Overview

Quantity:	100 µg
Target:	CIPC/KIAA1737 (CIPC)
Binding Specificity:	AA 1-399
Reactivity:	Human
Host:	Rabbit
Clonality:	Polyclonal
Conjugate:	This CIPC/KIAA1737 antibody is un-conjugated
Application:	ELISA, Immunohistochemistry (IHC), Western Blotting (WB)

Product Details

Immunogen:	Recombinant Human CLOCK-interacting pacemaker protein (1-399AA)
Isotype:	IgG
Cross-Reactivity:	Human, Mouse
Purification:	>95%, Protein G purified

Target Details

Target:	CIPC/KIAA1737 (CIPC)
Alternative Name:	CIPC (CIPC Products)
Background:	Background: Transcriptional repressor which acts as a negative-feedback regulator of CLOCK-ARNTL/BMAL1 transcriptional activity in the circadian-clock mechanism. Stimulates

Target Details

ARNTL/BMAL1-dependent phosphorylation of CLOCK.

Aliases: CIPC antibody, KIAA1737CLOCK-interacting pacemaker antibody, CLOCK-interacting circadian protein antibody

UniProt: [Q9C0C6](#)

Application Details

Application Notes: Recommended dilution: WB:1:1000-1:5000, IHC:1:20-1:200,

Restrictions: For Research Use only

Handling

Format: Liquid

Buffer: Preservative: 0.03 % Proclin 300
Constituents: 50 % Glycerol, 0.01M PBS, PH 7.4

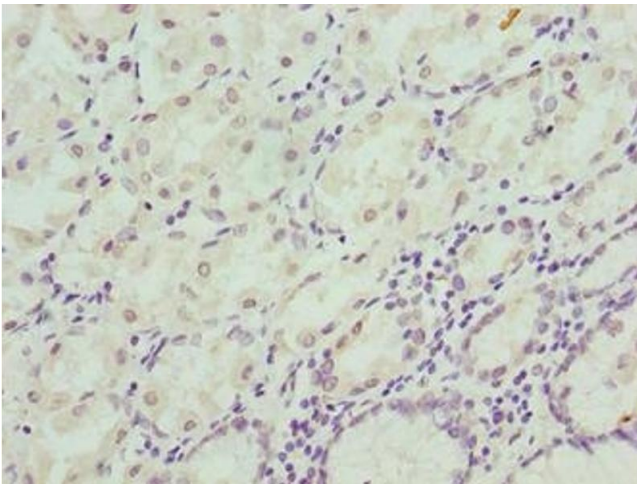
Preservative: ProClin

Precaution of Use: This product contains ProClin: a POISONOUS AND HAZARDOUS SUBSTANCE which should be handled by trained staff only.

Storage: -20 °C,-80 °C

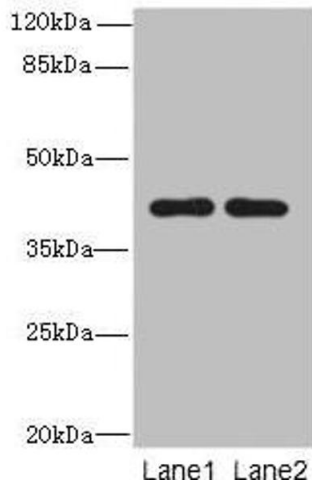
Storage Comment: Upon receipt, store at -20°C or -80°C. Avoid repeated freeze.

Images



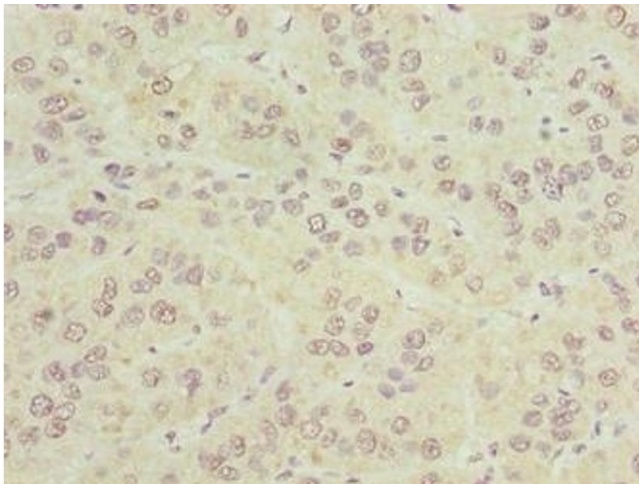
Immunohistochemistry

Image 1. Immunohistochemistry of paraffin-embedded human stomach tissue using ABIN7147940 at dilution of 1:100



Western Blotting

Image 2. Western blot All lanes: CIPC antibody at 6 μ g/mL
Lane 1: A431 whole cell lysate Lane 2: NIH/3T3 whole cell lysate
Secondary Goat polyclonal to rabbit IgG at 1/10000 dilution
Predicted band size: 43 kDa Observed band size: 43 kDa



Immunohistochemistry

Image 3. Immunohistochemistry of paraffin-embedded human liver cancer using ABIN7147940 at dilution of 1:100