



[Go to Product page](#)

Datasheet for ABIN7147944
anti-Clusterin antibody (AA 23-224)

3 Images

Overview

Quantity:	100 µg
Target:	Clusterin (CLU)
Binding Specificity:	AA 23-224
Reactivity:	Human
Host:	Rabbit
Clonality:	Polyclonal
Conjugate:	This Clusterin antibody is un-conjugated
Application:	Immunohistochemistry (IHC), ELISA, Immunofluorescence (IF)

Product Details

Immunogen:	Recombinant Human Clusterin protein (23-224AA)
Isotype:	IgG
Cross-Reactivity:	Human
Purification:	>95%, Protein G purified

Target Details

Target:	Clusterin (CLU)
Alternative Name:	CLU (CLU Products)
Background:	Background: Isoform 1 functions as extracellular chaperone that prevents aggregation of nonnative proteins. Prevents stress-induced aggregation of blood plasma proteins. Inhibits

Target Details

formation of amyloid fibrils by APP, APOC2, B2M, CALCA, CSN3, SNCA and aggregation-prone LYZ variants (in vitro). Does not require ATP. Maintains partially unfolded proteins in a state appropriate for subsequent refolding by other chaperones, such as HSPA8/HSC70. Does not refold proteins by itself. Binding to cell surface receptors triggers internalization of the chaperone-client complex and subsequent lysosomal or proteasomal degradation. Secreted isoform 1 protects cells against apoptosis and against cytolysis by complement. Intracellular isoforms interact with ubiquitin and SCF (SKP1-CUL1-F-box protein) E3 ubiquitin-protein ligase complexes and promote the ubiquitination and subsequent proteasomal degradation of target proteins. Promotes proteasomal degradation of COMMD1 and IKBKB. Modulates NF-kappa-B transcriptional activity. Nuclear isoforms promote apoptosis. Mitochondrial isoforms suppress BAX-dependent release of cytochrome c into the cytoplasm and inhibit apoptosis. Plays a role in the regulation of cell proliferation.

Aliases: 40 antibody, AAG 4 antibody, AAG4 antibody, Aging associated protein 4 antibody, Aging-associated gene 4 protein antibody, AI893575 antibody, APO J antibody, Apo-J antibody, APOJ antibody, ApoJalpha antibody, ApoJbeta antibody, Apolipoprotein J antibody, ApolipoproteinJ antibody, CLI antibody, CLU antibody, CLU1 antibody, CLU2 antibody, CLUS_HUMAN antibody, Clusterin alpha chain antibody, Clusterin antibody, Clusterin beta chain antibody, Complement associated protein SP 40 40 antibody, Complement associated protein SP 40 antibody, Complement associated protein SP40 antibody, Complement cytolysis inhibitor a chain antibody, Complement cytolysis inhibitor antibody, Complement cytolysis inhibitor b chain antibody, Complement lysis inhibitor antibody, Complement-associated protein SP-40 antibody, D14Ucla3 antibody, Dimeric acid glycoprotein antibody, Glycoprotein 80 antibody, Glycoprotein III antibody, GP80 antibody, Ku70-binding protein 1 antibody, KUB 1 antibody, KUB1 antibody, MGC24903 antibody, NA1/NA2 antibody, RATTRPM2B antibody, SGP 2 antibody, SGP2 antibody, SP 40 antibody, SP40 antibody, Supg-2 antibody, Sulfated glycoprotein 2 antibody, Testosterone repressed prostate message 2 antibody, Testosterone-repressed prostate message 2 antibody, TRPM 2 antibody, TRPM-2 antibody, TRPM2 antibody, TRPM2B antibody, Trpmb antibody

UniProt: [P10909](#)

Pathways: [Apoptosis](#), [Negative Regulation of intrinsic apoptotic Signaling](#)

Application Details

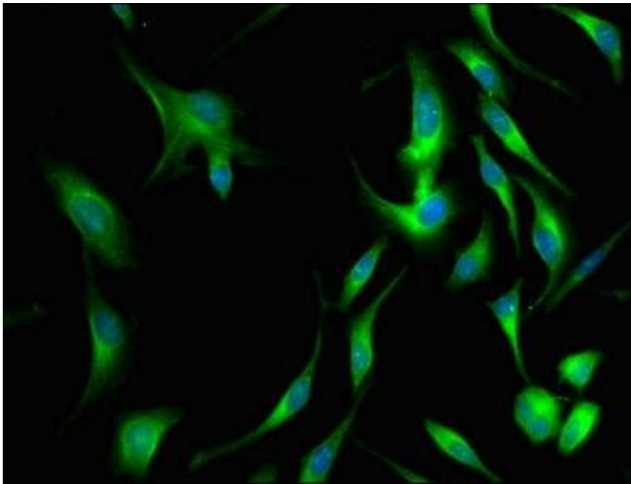
Application Notes: Recommended dilution: IHC:1:200-1:500, IF:1:50-1:200,

Restrictions: For Research Use only

Handling

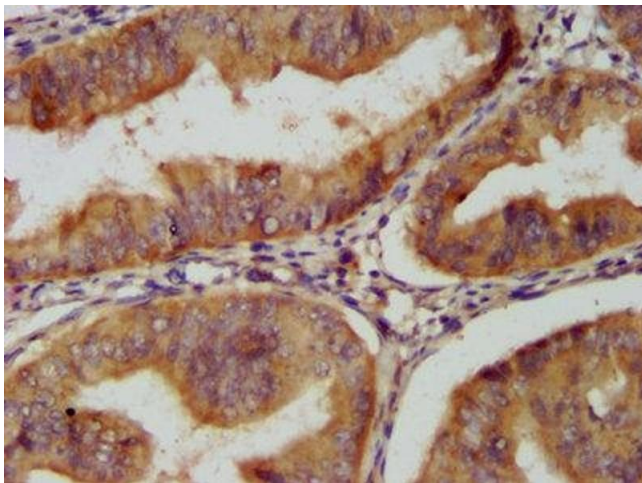
Format:	Liquid
Buffer:	Preservative: 0.03 % Proclin 300 Constituents: 50 % Glycerol, 0.01M PBS, PH 7.4
Preservative:	ProClin
Precaution of Use:	This product contains ProClin: a POISONOUS AND HAZARDOUS SUBSTANCE which should be handled by trained staff only.
Storage:	-20 °C,-80 °C
Storage Comment:	Upon receipt, store at -20°C or -80°C. Avoid repeated freeze.

Images



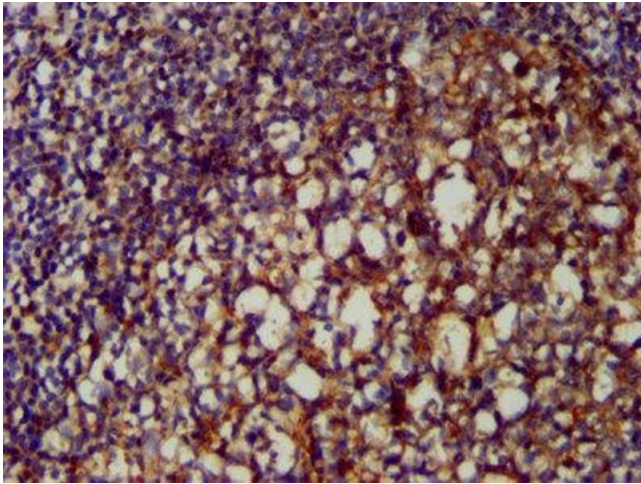
Immunofluorescence

Image 1. Immunofluorescence staining of HeLa cells with ABIN7147944 at 1:66, counter-stained with DAPI. The cells were fixed in 4% formaldehyde, permeabilized using 0.2% Triton X-100 and blocked in 10% normal Goat Serum. The cells were then incubated with the antibody overnight at 4°C. The secondary antibody was Alexa Fluor 488-conjugated AffiniPure Goat Anti-Rabbit IgG(H+L).



Immunohistochemistry

Image 2. IHC image of ABIN7147944 diluted at 1:200 and staining in paraffin-embedded human endometrial cancer performed on a Leica Bond™ system. After dewaxing and hydration, antigen retrieval was mediated by high pressure in a citrate buffer (pH 6.0). Section was blocked with 10% normal goat serum 30min at RT. Then primary antibody (1% BSA) was incubated at 4°C overnight. The primary is detected by a biotinylated secondary antibody and visualized using an HRP conjugated SP system.



Immunohistochemistry

Image 3. IHC image of ABIN7147944 diluted at 1:200 and staining in paraffin-embedded human tonsil tissue performed on a Leica Bond™ system. After dewaxing and hydration, antigen retrieval was mediated by high pressure in a citrate buffer (pH 6.0). Section was blocked with 10% normal goat serum 30min at RT. Then primary antibody (1% BSA) was incubated at 4°C overnight. The primary is detected by a biotinylated secondary antibody and visualized using an HRP conjugated SP system.