



[Go to Product page](#)

Datasheet for ABIN7147969

anti-SLC35A1 antibody (AA 1-100)

1 Image

Overview

Quantity:	100 µL
Target:	SLC35A1 (CMPST)
Binding Specificity:	AA 1-100
Reactivity:	Human
Host:	Rabbit
Clonality:	Polyclonal
Conjugate:	This SLC35A1 antibody is un-conjugated
Application:	Immunohistochemistry (IHC), ELISA

Product Details

Immunogen:	Recombinant Human CMP-sialic acid transporter protein (1-100AA)
Isotype:	IgG
Cross-Reactivity:	Human
Purification:	Antigen Affinity Purified

Target Details

Target:	SLC35A1 (CMPST)
Alternative Name:	SLC35A1 (CMPST Products)
Background:	Background: Transports CMP-sialic acid from the cytosol into Golgi vesicles where glycosyltransferases function.

Target Details

Aliases: CMP-SA-Tr antibody, CMP-Sia-Tr antibody, CMP-sialic acid transporter antibody, S35A1_HUMAN antibody, Slc35a1 antibody, Solute carrier family 35 member A1 antibody

UniProt: [P78382](#)

Application Details

Application Notes: Recommended dilution: IHC:1:20-1:200,

Restrictions: For Research Use only

Handling

Format: Liquid

Buffer: PBS with 0.02 % sodium azide, 50 % glycerol, pH 7.3.

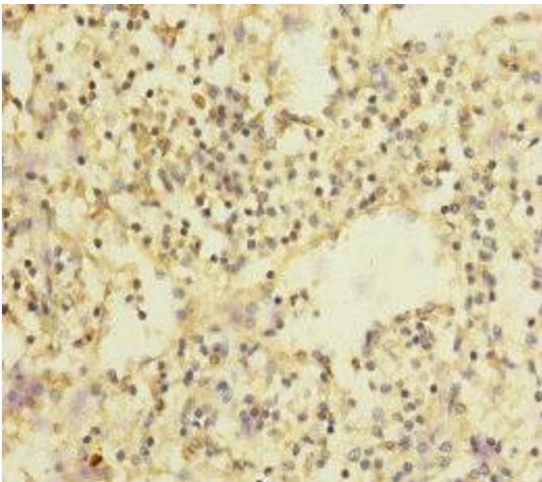
Preservative: Sodium azide

Precaution of Use: This product contains Sodium azide: a POISONOUS AND HAZARDOUS SUBSTANCE which should be handled by trained staff only.

Storage: -20 °C,-80 °C

Storage Comment: Upon receipt, store at -20°C or -80°C. Avoid repeated freeze.

Images



Immunohistochemistry

Image 1. Immunohistochemistry of paraffin-embedded human spleen tissue using ABIN7147969 at dilution of 1:100