



[Go to Product page](#)

Datasheet for ABIN7147984
anti-COTL1 antibody (AA 1-142)

3 Images

Overview

Quantity:	100 µL
Target:	COTL1
Binding Specificity:	AA 1-142
Reactivity:	Human
Host:	Rabbit
Clonality:	Polyclonal
Conjugate:	This COTL1 antibody is un-conjugated
Application:	Western Blotting (WB), Immunohistochemistry (IHC), ELISA

Product Details

Immunogen:	Recombinant Human Coactosin-like protein (1-142AA)
Isotype:	IgG
Cross-Reactivity:	Human, Mouse
Purification:	Antigen Affinity Purified

Target Details

Target:	COTL1
Alternative Name:	COTL1 (COTL1 Products)
Background:	Background: Binds to F-actin in a calcium-independent manner. Has no direct effect on actin depolymerization. Acts as a chaperone for ALOX5 (5LO), influencing both its stability and

Target Details

activity in leukotrienes synthesis.

Aliases: CLP antibody, Coactosin like 1 antibody, Coactosin-like protein antibody, COTL1 antibody, COTL1_HUMAN antibody, FLJ43657 antibody, MGC19733 antibody

UniProt: [Q14019](#)

Application Details

Application Notes: Recommended dilution: WB:1:500-1:2000, IHC:1:20-1:200,

Restrictions: For Research Use only

Handling

Format: Liquid

Buffer: PBS with 0.02 % sodium azide, 50 % glycerol, pH 7.3.

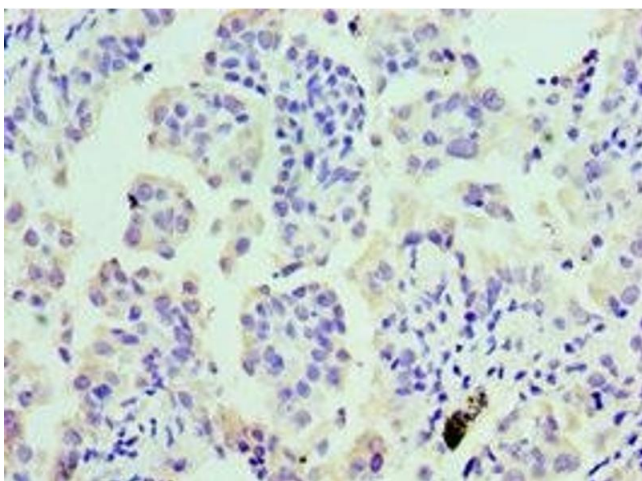
Preservative: Sodium azide

Precaution of Use: This product contains Sodium azide: a POISONOUS AND HAZARDOUS SUBSTANCE which should be handled by trained staff only.

Storage: -20 °C,-80 °C

Storage Comment: Upon receipt, store at -20°C or -80°C. Avoid repeated freeze.

Images



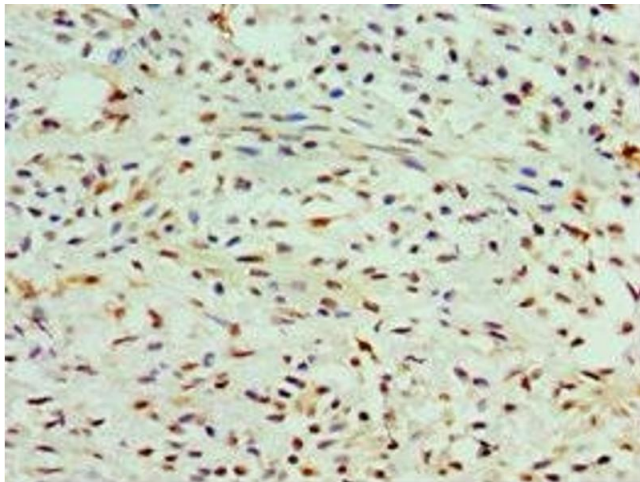
Immunohistochemistry

Image 1. Immunohistochemistry of paraffin-embedded human lung cancer using ABIN7147984 at dilution of 1:100



Western Blotting

Image 2. Western blot All lanes: COTL1 antibody at 5 µg/mL
Lane 1: Mouse brain tissue Lane 2: Mouse kidney tissue
Secondary Goat polyclonal to rabbit IgG at 1/10000 dilution
Predicted band size: 16 kDa Observed band size: 16 kDa



Immunohistochemistry

Image 3. Immunohistochemistry of paraffin-embedded human breast cancer using ABIN7147984 at dilution of 1:100