



[Go to Product page](#)

Datasheet for ABIN7147985
anti-COTL1 antibody (AA 2-142)

3 Images

Overview

| | |
|----------------------|--|
| Quantity: | 100 µg |
| Target: | COTL1 |
| Binding Specificity: | AA 2-142 |
| Reactivity: | Human |
| Host: | Rabbit |
| Clonality: | Polyclonal |
| Conjugate: | This COTL1 antibody is un-conjugated |
| Application: | Western Blotting (WB), Immunohistochemistry (IHC), ELISA |

Product Details

| | |
|-------------------|--|
| Immunogen: | Recombinant Human Coactosin-like protein (2-142AA) |
| Isotype: | IgG |
| Cross-Reactivity: | Human, Mouse |
| Purification: | >95%, Protein G purified |

Target Details

| | |
|-------------------|---|
| Target: | COTL1 |
| Alternative Name: | COTL1 (COTL1 Products) |
| Background: | Background: Binds to F-actin in a calcium-independent manner. Has no direct effect on actin depolymerization. Acts as a chaperone for ALOX5 (5LO), influencing both its stability and |

Target Details

activity in leukotrienes synthesis.

Aliases: CLP antibody, Coactosin like 1 antibody, Coactosin-like protein antibody, COTL1 antibody, COTL1_HUMAN antibody, FLJ43657 antibody, MGC19733 antibody

UniProt: [Q14019](#)

Application Details

Application Notes: Recommended dilution: WB:1:500-1:5000, IHC:1:20-1:200,

Restrictions: For Research Use only

Handling

Format: Liquid

Buffer: Preservative: 0.03 % Proclin 300
Constituents: 50 % Glycerol, 0.01M PBS, PH 7.4

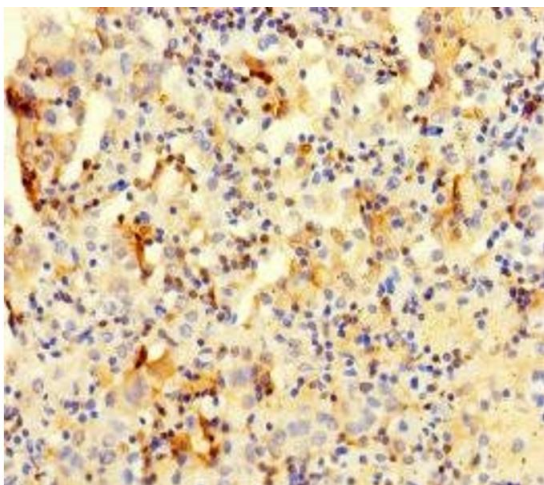
Preservative: ProClin

Precaution of Use: This product contains ProClin: a POISONOUS AND HAZARDOUS SUBSTANCE which should be handled by trained staff only.

Storage: -20 °C,-80 °C

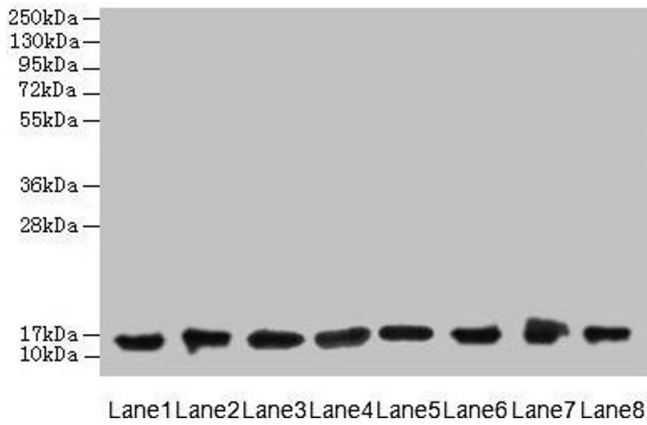
Storage Comment: Upon receipt, store at -20°C or -80°C. Avoid repeated freeze.

Images



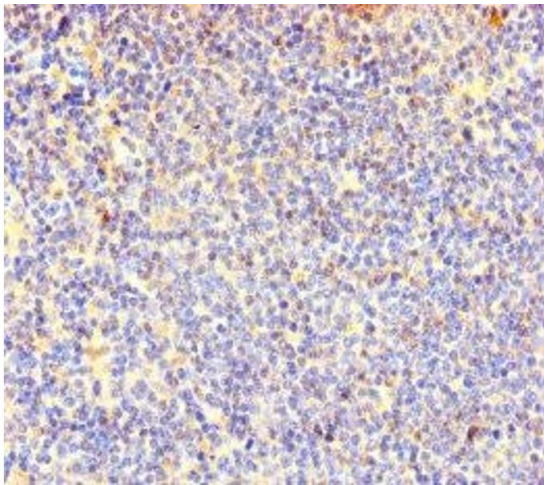
Immunohistochemistry

Image 1. Immunohistochemistry of paraffin-embedded human lung cancer using ABIN7147985 at dilution of 1:100



Western Blotting

Image 2. Western blot All lanes: COTL1 antibody at 8 µg/mL
 Lane 1: Mouse brain tissue Lane 2: Hela whole cell lysate
 Lane 3: Mouse kidney tissue Lane 4: HepG2 whole cell
 lysate Lane 5: Mouse thymus tissue Lane 6: U87 whole cell
 lysate Lane 7: HL60 whole cell lysate Lane 8: A549 whole
 cell lysate Secondary Goat polyclonal to rabbit IgG at
 1/10000 dilution Predicted band size: 16 kDa Observed
 band size: 16 kDa



Immunohistochemistry

Image 3. Immunohistochemistry of paraffin-embedded
 human lymphoid tissue using ABIN7147985 at dilution of
 1:100