

Datasheet for ABIN7148013  
**anti-COPB2 antibody (AA 657-906)**[Go to Product page](#)

## 3 Images

## Overview

Quantity:	100 µL
Target:	COPB2
Binding Specificity:	AA 657-906
Reactivity:	Human
Host:	Rabbit
Clonality:	Polyclonal
Conjugate:	This COPB2 antibody is un-conjugated
Application:	Western Blotting (WB), Immunohistochemistry (IHC), ELISA

## Product Details

Immunogen:	Recombinant Human Coatomer subunit beta\\\' protein (657-906AA)
Isotype:	IgG
Cross-Reactivity:	Human
Purification:	Antigen Affinity Purified

## Target Details

Target:	COPB2
Alternative Name:	COPB2 ( <a href="#">COPB2 Products</a> )
Background:	Background: The coatomer is a cytosolic protein complex that binds to dilysine motifs and reversibly associates with Golgi non-clathrin-coated vesicles, which further mediate



## Target Details

biosynthetic protein transport from the ER, via the Golgi up to the trans Golgi network.

Coatomer complex is required for budding from Golgi membranes, and is essential for the retrograde Golgi-to-ER transport of dilysine-tagged proteins. In mammals, the coatomer can only be recruited by membranes associated to ADP-ribosylation factors (ARFs), which are small GTP-binding proteins, the complex also influences the Golgi structural integrity, as well as the processing, activity, and endocytic recycling of LDL receptors (By similarity).

Aliases: Beta'-coat protein antibody, Beta'-COP antibody, Coatomer subunit beta' antibody, Copb2 antibody, COPB2\_HUMAN antibody, p102 antibody

UniProt: [P35606](#)

## Application Details

Application Notes: Recommended dilution: WB:1:1000-1:5000, IHC:1:20-1:200,

Restrictions: For Research Use only

## Handling

Format: Liquid

Buffer: PBS with 0.02 % sodium azide, 50 % glycerol, pH 7.3.

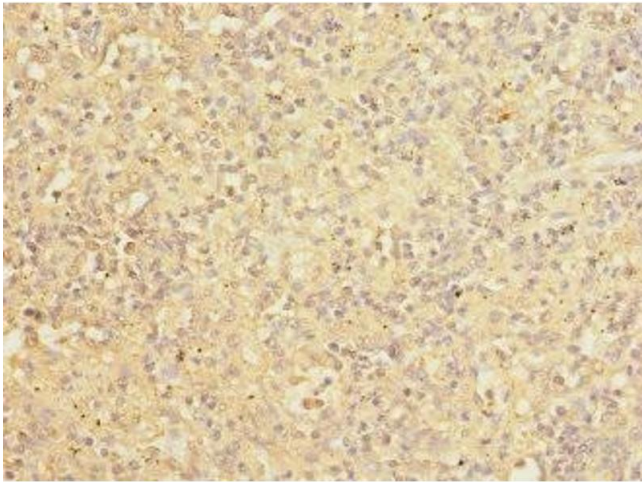
Preservative: Sodium azide

Precaution of Use: This product contains Sodium azide: a POISONOUS AND HAZARDOUS SUBSTANCE which should be handled by trained staff only.

Storage: -20 °C,-80 °C

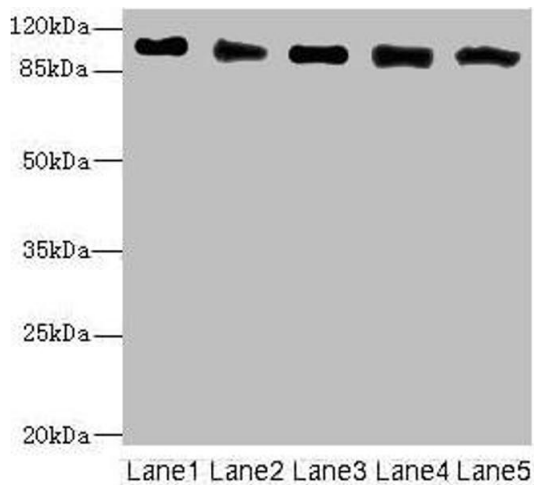
Storage Comment: Upon receipt, store at -20°C or -80°C. Avoid repeated freeze.





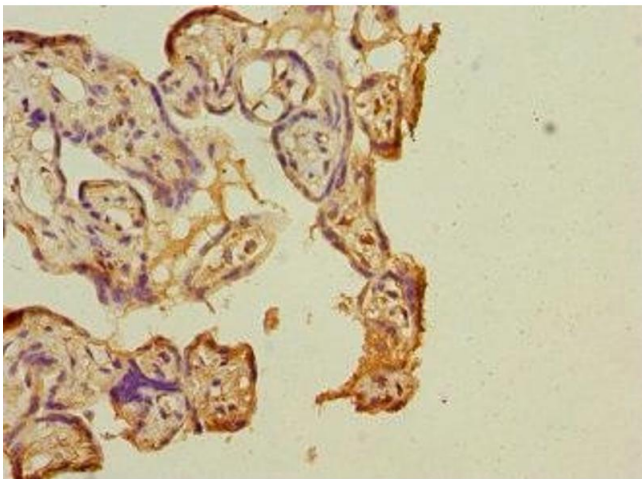
#### Immunohistochemistry

**Image 1.** Immunohistochemistry of paraffin-embedded human spleen tissue using ABIN7148013 at dilution of 1:100



#### Western Blotting

**Image 2.** Western blot All lanes: COPB2 antibody at 2.51  $\mu$ g/mL Lane 1: Human placenta tissue Lane 2: MCF-7 whole cell lysate Lane 3: Hela whole cell lysate Lane 4: HepG2 whole cell lysate Lane 5: Jurkat whole cell lysate Secondary Goat polyclonal to rabbit IgG at 1/10000 dilution Predicted band size: 103, 100 kDa Observed band size: 103 kDa



#### Immunohistochemistry

**Image 3.** Immunohistochemistry of paraffin-embedded human placenta tissue using ABIN7148013 at dilution of 1:100