

Datasheet for ABIN7148039
anti-COCH antibody (AA 20-260)



[Go to Product page](#)

2 Images

Overview

Quantity:	100 µL
Target:	COCH
Binding Specificity:	AA 20-260
Reactivity:	Human
Host:	Rabbit
Clonality:	Polyclonal
Conjugate:	This COCH antibody is un-conjugated
Application:	ELISA, Immunohistochemistry (IHC)

Product Details

Immunogen:	Recombinant Human Cochlin protein (20-260AA)
Isotype:	IgG
Cross-Reactivity:	Human
Purification:	Antigen Affinity Purified

Target Details

Target:	COCH
Alternative Name:	COCH (COCH Products)
Background:	Background: Plays a role in the control of cell shape and motility in the trabecular meshwork. Aliases: COCH antibody, COCH5B2 antibody, UNQ257/PRO294Cochlin antibody, COCH-5B2

Target Details

antibody

UniProt: [O43405](#)

Pathways: [Sensory Perception of Sound](#)

Application Details

Application Notes: Recommended dilution: IHC:1:20-1:200,

Restrictions: For Research Use only

Handling

Format: Liquid

Buffer: PBS with 0.02 % sodium azide, 50 % glycerol, pH 7.3.

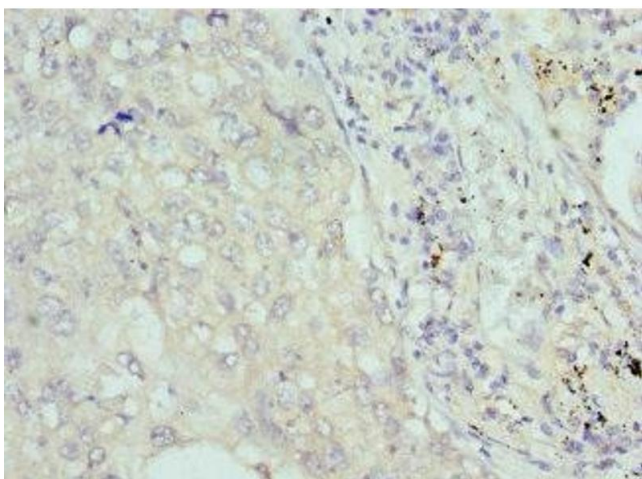
Preservative: Sodium azide

Precaution of Use: This product contains Sodium azide: a POISONOUS AND HAZARDOUS SUBSTANCE which should be handled by trained staff only.

Storage: -20 °C,-80 °C

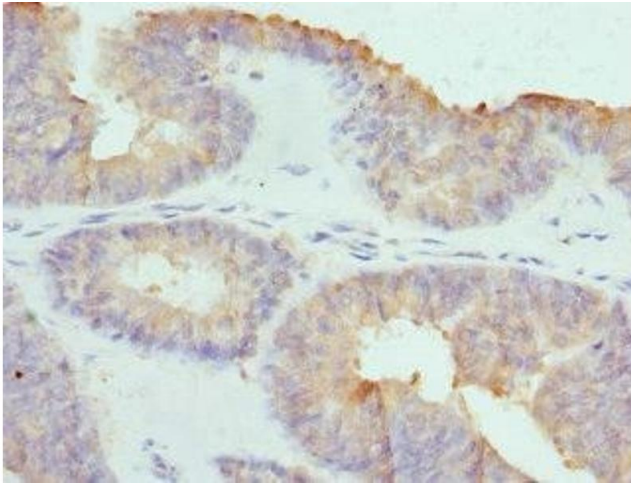
Storage Comment: Upon receipt, store at -20°C or -80°C. Avoid repeated freeze.

Images



Immunohistochemistry

Image 1. Immunohistochemistry of paraffin-embedded human lung cancer using ABIN7148039 at dilution of 1:100



Immunohistochemistry

Image 2. Immunohistochemistry of paraffin-embedded human endometrial cancer using ABIN7148039 at dilution of 1:100