

Datasheet for ABIN7148048
anti-Cofilin 2 antibody (AA 1-166)

3 Images

[Go to Product page](#)

Overview

Quantity:	100 µL
Target:	Cofilin 2 (CFL2)
Binding Specificity:	AA 1-166
Reactivity:	Human
Host:	Rabbit
Clonality:	Polyclonal
Conjugate:	This Cofilin 2 antibody is un-conjugated
Application:	Western Blotting (WB), ELISA, Immunohistochemistry (IHC)

Product Details

Immunogen:	Recombinant Human Cofilin-2 protein (1-166AA)
Isotype:	IgG
Cross-Reactivity:	Human, Mouse
Purification:	Antigen Affinity Purified

Target Details

Target:	Cofilin 2 (CFL2)
Alternative Name:	CFL2 (CFL2 Products)
Background:	Background: Controls reversibly actin polymerization and depolymerization in a pH -sensitive manner. Its F-actin depolymerization activity is regulated by association with CSPR3

Target Details

(PubMed:19752190). It has the ability to bind G- and F-actin in a 1:1 ratio of cofilin to actin. It is the major component of intranuclear and cytoplasmic actin rods. Required for muscle maintenance. May play a role during the exchange of alpha-actin forms during the early postnatal remodeling of the sarcomere (By similarity).

Aliases: CFL 2 antibody, CFL2 antibody, COF2_HUMAN antibody, Cofilin 2 muscle antibody, Cofilin antibody, Cofilin muscle antibody, Cofilin muscle isoform antibody, Cofilin-2 antibody, Cofilin2 antibody, muscle isoform antibody, NEM 7 antibody, NEM7 antibody

UniProt: [Q9Y281](#)

Pathways: [Caspase Cascade in Apoptosis](#)

Application Details

Application Notes: Recommended dilution: WB:1:1000-1:5000, IHC:1:20-1:200,

Restrictions: For Research Use only

Handling

Format: Liquid

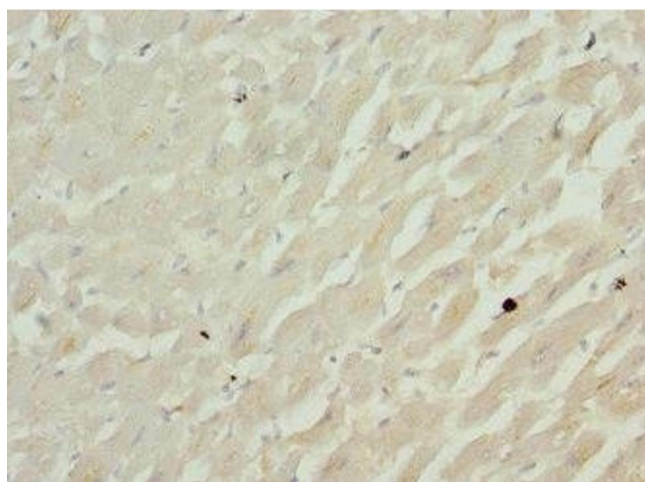
Buffer: PBS with 0.02 % sodium azide, 50 % glycerol, pH 7.3.

Preservative: Sodium azide

Precaution of Use: This product contains Sodium azide: a POISONOUS AND HAZARDOUS SUBSTANCE which should be handled by trained staff only.

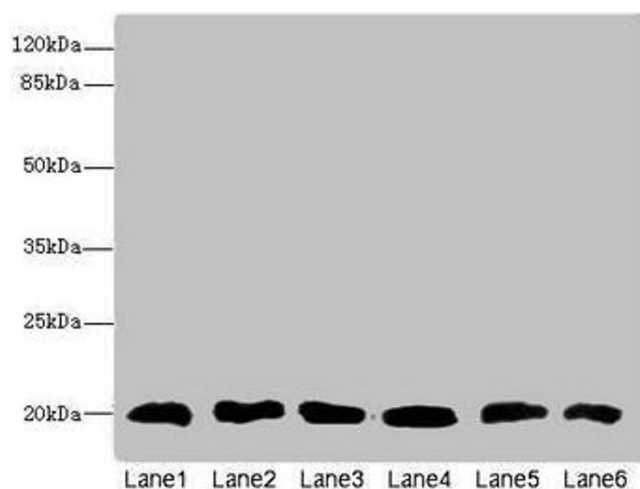
Storage: -20 °C, -80 °C

Storage Comment: Upon receipt, store at -20°C or -80°C. Avoid repeated freeze.



Immunohistochemistry

Image 1. Immunohistochemistry of paraffin-embedded human heart tissue using ABIN7148048 at dilution of 1:100



Western Blotting

Image 2. Western blot All lanes: CFL2 antibody at 3.75 μ g/mL Lane 1: Mouse brain tissue Lane 2: Mouse liver tissue Lane 3: Mouse lung tissue Lane 4: LO2 whole cell lysate Lane 5: Hela whole cell lysate Lane 6: A549 whole cell lysate Secondary Goat polyclonal to rabbit IgG at 1/10000 dilution Predicted band size: 19, 17 kDa Observed band size: 19 kDa



Immunohistochemistry

Image 3. Immunohistochemistry of paraffin-embedded human skeletal muscle tissue using ABIN7148048 at dilution of 1:100