

Datasheet for ABIN7148054
anti-CCHCR1 antibody (AA 281-500)[Go to Product page](#)

3 Images

Overview

Quantity:	100 µL
Target:	CCHCR1
Binding Specificity:	AA 281-500
Reactivity:	Human
Host:	Rabbit
Clonality:	Polyclonal
Conjugate:	This CCHCR1 antibody is un-conjugated
Application:	Western Blotting (WB), ELISA, Immunohistochemistry (IHC), Immunofluorescence (IF)

Product Details

Immunogen:	Recombinant Human Coiled-coil alpha-helical rod protein 1 protein (281-500aa)
Isotype:	IgG
Cross-Reactivity:	Human
Purification:	>95%, Protein G purified

Target Details

Target:	CCHCR1
Alternative Name:	CCHCR1 (CCHCR1 Products)
Background:	Background: May be a regulator of keratinocyte proliferation or differentiation. Aliases: Coiled-coil alpha-helical rod protein 1 (Alpha-helical coiled-coil rod protein) (Putative)

Target Details

gene 8 protein) (Pg8), CCHCR1, C6orf18 HCR

UniProt: [Q8TD31](#)

Application Details

Application Notes: Recommended dilution: WB:1:1000-1:5000, IHC:1:100-1:500, IF:1:100-1:500,

Restrictions: For Research Use only

Handling

Format: Liquid

Buffer: Preservative: 0.03 % Proclin 300
Constituents: 50 % Glycerol, 0.01M PBS, pH 7.4

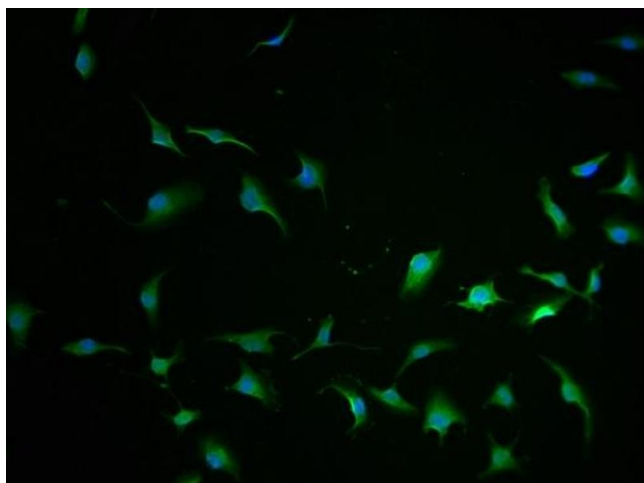
Preservative: ProClin

Precaution of Use: This product contains ProClin: a POISONOUS AND HAZARDOUS SUBSTANCE which should be handled by trained staff only.

Storage: -20 °C, -80 °C

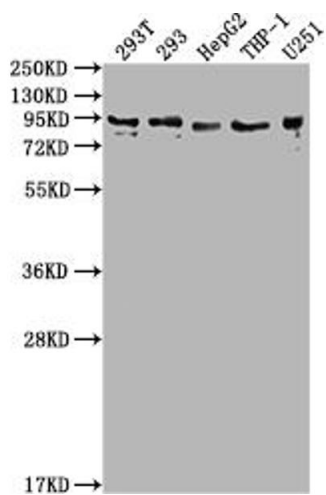
Storage Comment: Upon receipt, store at -20°C or -80°C. Avoid repeated freeze.

Images



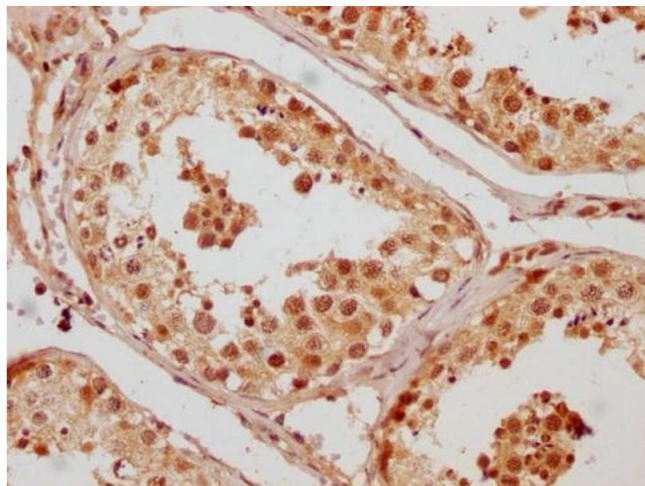
Immunofluorescence

Image 1. Immunofluorescence staining of U251 cells with ABIN7148054-IF at 1:100, counter-stained with DAPI. The cells were fixed in 4 % formaldehyde and blocked in 10 % normal Goat Serum. The cells were then incubated with the antibody overnight at 4 °C. The secondary antibody was Alexa Fluor 488-conjugated AffiniPure Goat Anti-Rabbit IgG(H+L).



Western Blotting

Image 2. Western Blot Positive WB detected in: 293T whole cell lysate, 293 whole cell lysate, HepG2 whole cell lysate, THP-1 whole cell lysate, U251 whole cell lysate All lanes: CCHCR1 antibody at 1:2000 Secondary Goat polyclonal to rabbit IgG at 1/50000 dilution Predicted band size: 89, 100, 96 kDa Observed band size: 89 kDa



Immunohistochemistry

Image 3. IHC image of ABIN7148054 diluted at 1:200 and staining in paraffin-embedded human testis tissue performed on a Leica Bond™ system. After dewaxing and hydration, antigen retrieval was mediated by high pressure in a citrate buffer (pH 6.0). Section was blocked with 10 % normal goat serum 30 min at RT. Then primary antibody (1 % BSA) was incubated at 4 °C overnight. The primary is detected by a Goat anti-rabbit polymer IgG labeled by HRP and visualized using 0.05 % DAB.