



[Go to Product page](#)

Datasheet for ABIN714806
anti-ITGAV/ITGB6 antibody

2 Images

3 Publications

Overview

Quantity:	100 µL
Target:	ITGAV/ITGB6
Reactivity:	Human, Mouse, Rat
Host:	Rabbit
Clonality:	Polyclonal
Conjugate:	This ITGAV/ITGB6 antibody is un-conjugated
Application:	Flow Cytometry (FACS), Western Blotting (WB), Immunofluorescence (Cultured Cells) (IF (cc)), Immunofluorescence (Paraffin-embedded Sections) (IF (p)), Immunohistochemistry (Frozen Sections) (IHC (fro)), ELISA, Immunohistochemistry (Paraffin-embedded Sections) (IHC (p))

Product Details

Immunogen:	KLH conjugated synthetic peptide derived from human Integrin Alpha V + Beta 6
Isotype:	IgG
Cross-Reactivity:	Human, Mouse, Rat
Purification:	Purified by Protein A.

Target Details

Target:	ITGAV/ITGB6
Alternative Name:	Integrin Alpha V + Beta 6 (ITGAV/ITGB6 Products)
Background:	Synonyms: CD51, Integrin alpha-V light chain, integrin, alpha V vitronectin receptor, alpha polypeptide, antigen CD51, Integrin, alpha V, Integrin, beta 6, ITAV_HUMAN, ITGAV, ITGB6,

Target Details

Vitronectin receptor subunit alpha.

Background: Integrins are heterodimeric cell surface receptors composed of alpha and beta subunits, which mediate cell-cell and cell-extracellular matrix attachments. Aberrant integrin expression has been found in many epithelial tumours. Changes in integrin expression have been shown to be important for the growth and early metastatic capacity of melanoma cells. Integrin alpha-v beta-6 is upregulated in cancers and during tissue remodelling but is absent from resting adult tissues. Integrin alpha-v beta-6 promotes invasion and correlates with poor survival and therefore makes a promising therapeutic target.

Gene ID: 36853694

Application Details

Application Notes: WB 1:300-5000
ELISA 1:500-1000
FCM 1:20-100
IHC-P 1:200-400
IHC-F 1:100-500
IF(IHC-P) 1:50-200
IF(IHC-F) 1:50-200
IF(ICC) 1:50-200

Restrictions: For Research Use only

Handling

Format: Liquid

Concentration: 1 µg/µL

Buffer: 0.01M TBS(pH 7.4) with 1 % BSA, 0.02 % Proclin300 and 50 % Glycerol.

Preservative: ProClin

Precaution of Use: This product contains ProClin: a POISONOUS AND HAZARDOUS SUBSTANCE, which should be handled by trained staff only.

Storage: 4 °C, -20 °C

Storage Comment: Shipped at 4°C. Store at -20°C for one year. Avoid repeated freeze/thaw cycles.

Expiry Date: 12 months

Publications

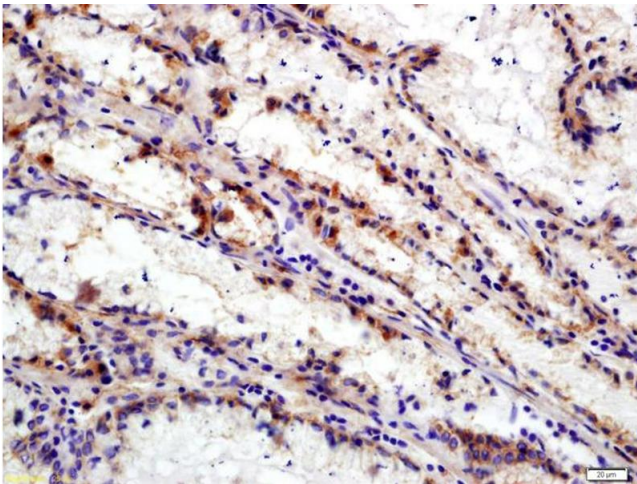
Product cited in:

Cargnoni, Farigu, Cotti Piccinelli, Bonassi Signoroni, Romele, Vanosi, Toschi, Cesari, Barros SantAnna, Magatti, Silini, Parolini: "Effect of human amniotic epithelial cells on pro-fibrogenic resident hepatic cells in a rat model of liver fibrosis." in: **Journal of cellular and molecular medicine**, Vol. 22, Issue 2, pp. 1202-1213, (2017) ([PubMed](#)).

Gao, Gao, Zhang, Liu, Jia, Zhu, Wang, Liu: "A near-infrared phthalocyanine dye-labeled agent for integrin α v β 6-targeted theranostics of pancreatic cancer." in: **Biomaterials**, Vol. 53, pp. 229-38, (2015) ([PubMed](#)).

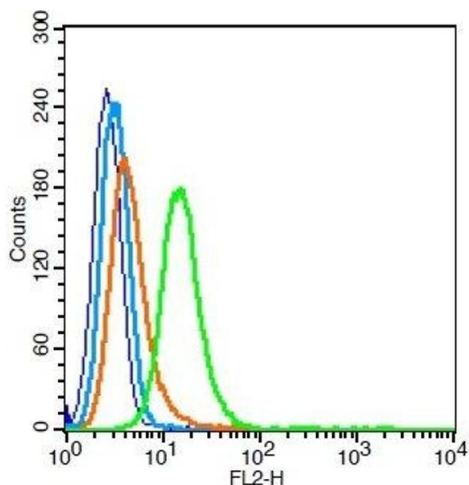
Li, Huang, Gao, Chen, Zhang, Zheng: "Scutellarin inhibits the growth and invasion of human tongue squamous carcinoma through the inhibition of matrix metalloproteinase-2 and -9 and α v β 6 integrin." in: **International journal of oncology**, Vol. 42, Issue 5, pp. 1674-81, (2013) ([PubMed](#)).

Images



Immunohistochemistry

Image 1. Formalin-fixed and paraffin embedded human gastric carcinoma labeled with Anti-Integrin Alpha V + Beta 6 Polyclonal Antibody, Unconjugated (ABIN714806) at 1:200 followed by conjugation to the secondary antibody and DAB staining



Flow Cytometry

Image 2. HeLa cells probed with Integrin Alpha V + Beta 6 Antibody, Unconjugated at 1:100 for 30 minutes followed by incubation with a conjugated secondary (PE Conjugated) (green) for 30 minutes compared to control cells (blue), secondary only (light blue) and isotype control (orange).