



[Go to Product page](#)

Datasheet for ABIN7148068

anti-CCDC112 antibody (AA 201-446)

4 Images

Overview

Quantity:	100 µg
Target:	CCDC112
Binding Specificity:	AA 201-446
Reactivity:	Human
Host:	Rabbit
Clonality:	Polyclonal
Conjugate:	This CCDC112 antibody is un-conjugated
Application:	ELISA, Western Blotting (WB), Immunohistochemistry (IHC), Immunofluorescence (IF)

Product Details

Immunogen:	Recombinant Human Coiled-coil domain-containing protein 112 protein (201-446AA)
Isotype:	IgG
Cross-Reactivity:	Human
Purification:	>95%, Protein G purified

Target Details

Target:	CCDC112
Alternative Name:	CCDC112 (CCDC112 Products)
Background:	MBC1 antibody, CC112_HUMAN antibody, CCDC112 antibody, coiled coil domain containing 112 antibody, Coiled coil domain containing protein 112 antibody, Coiled-coil domain-containing

Target Details

protein 112 antibody, Mutated in bladder cancer 1 antibody, Mutated in bladder cancer protein 1 antibody

UniProt: [Q8NEF3](#)

Application Details

Application Notes: Recommended dilution: WB:1:500-1:2000, IHC:1:20-1:200, IF:1:50-1:200,

Restrictions: For Research Use only

Handling

Format: Liquid

Buffer: Preservative: 0.03 % Proclin 300
Constituents: 50 % Glycerol, 0.01M PBS, PH 7.4

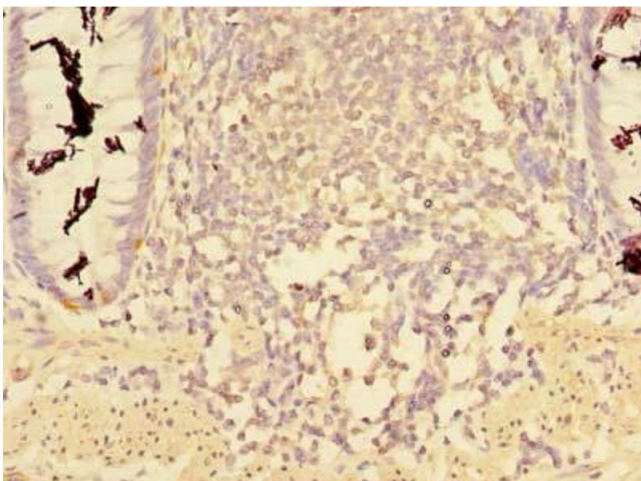
Preservative: ProClin

Precaution of Use: This product contains ProClin: a POISONOUS AND HAZARDOUS SUBSTANCE which should be handled by trained staff only.

Storage: -20 °C,-80 °C

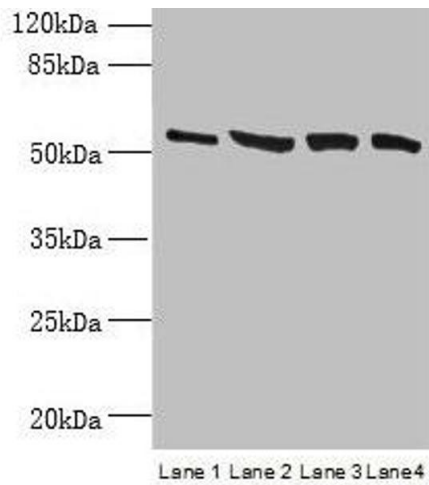
Storage Comment: Upon receipt, store at -20°C or -80°C. Avoid repeated freeze.

Images



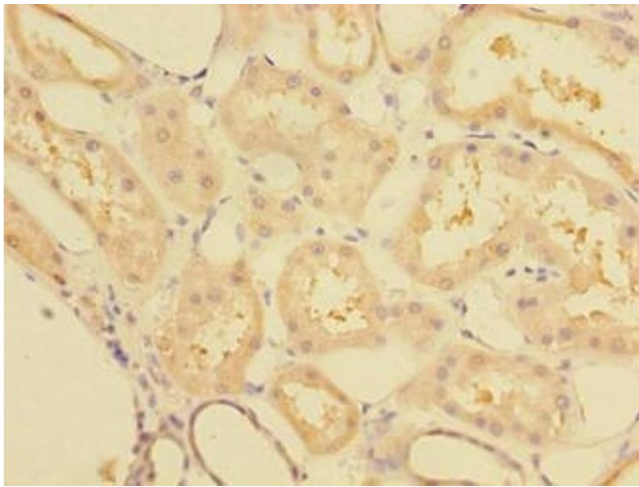
Immunohistochemistry

Image 1. Immunohistochemistry of paraffin-embedded human colon tissue using ABIN7148068 at dilution of 1:100



Western Blotting

Image 2. Western blot All lanes: CCDC112 antibody at 12 μ g/mL Lane 1: Jurkat whole cell lysate Lane 2: HeLa whole cell lysate Lane 3: HepG2 whole cell lysate Lane 4: A549 whole cell lysate Secondary Goat polyclonal to rabbit IgG at 1/10000 dilution Predicted band size: 54, 62 kDa Observed band size: 54 kDa



Immunohistochemistry

Image 3. Immunohistochemistry of paraffin-embedded human kidney tissue using ABIN7148068 at dilution of 1:100

Please check the [product details page](#) for more images. Overall 4 images are available for ABIN7148068.