



[Go to Product page](#)

Datasheet for ABIN7148088

anti-CCDC14 antibody (AA 159-440)

2 Images

Overview

Quantity:	100 µg
Target:	CCDC14
Binding Specificity:	AA 159-440
Reactivity:	Human
Host:	Rabbit
Clonality:	Polyclonal
Conjugate:	This CCDC14 antibody is un-conjugated
Application:	ELISA, Western Blotting (WB), Immunohistochemistry (IHC)

Product Details

Immunogen:	Recombinant Human Coiled-coil domain-containing protein 14 protein (159-440AA)
Isotype:	IgG
Cross-Reactivity:	Human
Purification:	>95%, Protein G purified

Target Details

Target:	CCDC14
Alternative Name:	CCDC14 (CCDC14 Products)
Background:	Background: Negatively regulates centriole duplication. Negatively regulates CEP63 and CDK2 centrosomal localization.

Target Details

Aliases: CCDC14 antibody, Coiled-coil domain-containing protein 14 antibody

UniProt: [Q49A88](#)

Application Details

Application Notes: Recommended dilution: WB:1:500-1:2000, IHC:1:20-1:200,

Restrictions: For Research Use only

Handling

Format: Liquid

Buffer: Preservative: 0.03 % Proclin 300
Constituents: 50 % Glycerol, 0.01M PBS, PH 7.4

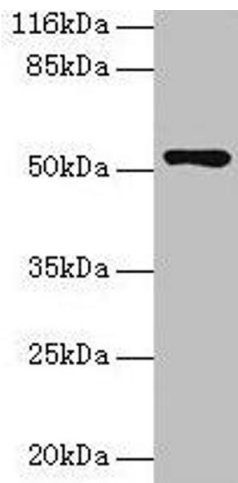
Preservative: ProClin

Precaution of Use: This product contains ProClin: a POISONOUS AND HAZARDOUS SUBSTANCE which should be handled by trained staff only.

Storage: -20 °C,-80 °C

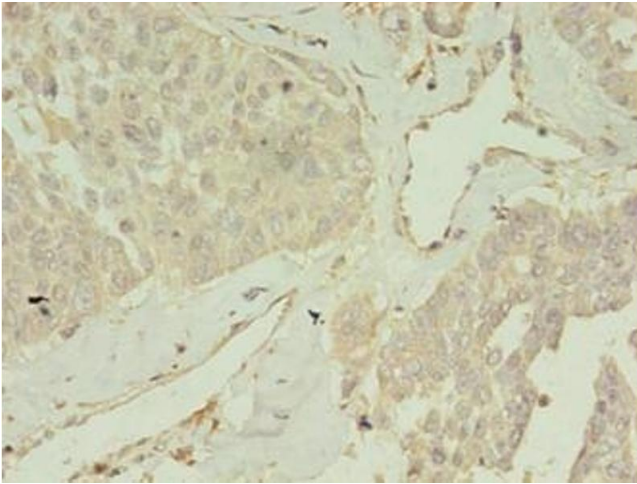
Storage Comment: Upon receipt, store at -20°C or -80°C. Avoid repeated freeze.

Images



Western Blotting

Image 1. Western blot All lanes: CCDC14 antibody at 2 μ g/mL + Jurkat whole cell lysate Secondary Goat polyclonal to rabbit IgG at 1/10000 dilution Predicted band size: 107, 84, 89, 52, 102 kDa Observed band size: 52 kDa



Immunohistochemistry

Image 2. Immunohistochemistry of paraffin-embedded human endometrial cancer using ABIN7148088 at dilution of 1:100