



[Go to Product page](#)

Datasheet for ABIN7148140  
**anti-CCDC68 antibody (AA 131-335)**

1 Image

### Overview

Quantity:	100 µg
Target:	CCDC68
Binding Specificity:	AA 131-335
Reactivity:	Human
Host:	Rabbit
Clonality:	Polyclonal
Conjugate:	This CCDC68 antibody is un-conjugated
Application:	ELISA, Immunohistochemistry (IHC)

### Product Details

Immunogen:	Recombinant Human Coiled-coil domain-containing protein 68 protein (131-335AA)
Isotype:	IgG
Cross-Reactivity:	Human
Purification:	>95%, Protein G purified

### Target Details

Target:	CCDC68
Alternative Name:	CCDC68 ( <a href="#">CCDC68 Products</a> )
Background:	CCD68_HUMAN antibody, CCDC 68 antibody, CCDC68 antibody, Coiled coil domain containing 68 antibody, Coiled coil domain containing protein 68 antibody, Coiled-coil domain-containing

## Target Details

protein 68 antibody, CTCL associated antigen se57 1 antibody, CTCL tumor antigen se57 1 antibody, CTCL-associated antigen se57-1 antibody, Cutaneous T cell lymphoma associated antigen antibody, Cutaneous T cell lymphoma associated antigen se57 1 antibody, Cutaneous T-cell lymphoma-associated antigen se57-1 antibody, FLJ25368 antibody, SE57 1 antibody

UniProt: [Q9H2F9](#)

## Application Details

Application Notes: Recommended dilution: IHC:1:20-1:200,

Restrictions: For Research Use only

## Handling

Format: Liquid

Buffer: Preservative: 0.03 % Proclin 300  
Constituents: 50 % Glycerol, 0.01M PBS, PH 7.4

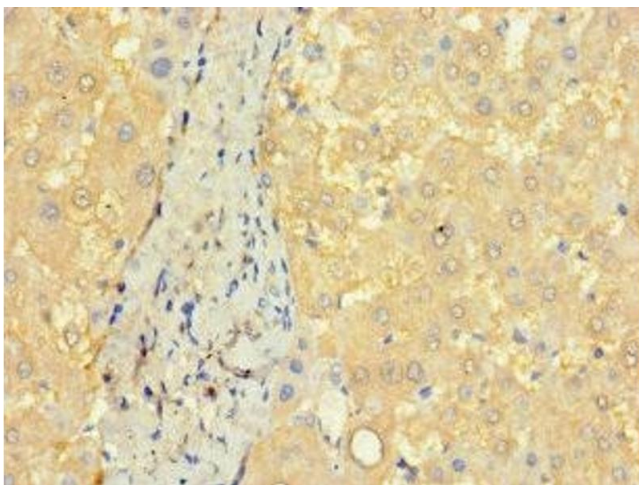
Preservative: ProClin

Precaution of Use: This product contains ProClin: a POISONOUS AND HAZARDOUS SUBSTANCE which should be handled by trained staff only.

Storage: -20 °C,-80 °C

Storage Comment: Upon receipt, store at -20°C or -80°C. Avoid repeated freeze.

## Images



### Immunohistochemistry

**Image 1.** Immunohistochemistry of paraffin-embedded human liver tissue using ABIN7148140 at dilution of 1:100