

Datasheet for ABIN7148257
anti-COL4a5 antibody (AA 1184-1235)[Go to Product page](#)

1 Image

Overview

Quantity:	100 µg
Target:	COL4a5 (COL4A5)
Binding Specificity:	AA 1184-1235
Reactivity:	Human
Host:	Rabbit
Clonality:	Polyclonal
Conjugate:	This COL4a5 antibody is un-conjugated
Application:	Immunohistochemistry (IHC), ELISA

Product Details

Immunogen:	Recombinant Human Collagen alpha-5(IV) chain protein (1184-1235AA)
Isotype:	IgG
Cross-Reactivity:	Human
Purification:	>95%, Protein G purified

Target Details

Target:	COL4a5 (COL4A5)
Alternative Name:	COL4A5 (COL4A5 Products)
Background:	Background: Type IV collagen is the major structural component of glomerular basement membranes (GBM), forming a 'chicken-wire' meshwork together with laminins, proteoglycans

Target Details

	and entactin/nidogen. Aliases: CO4A5_HUMAN antibody, COL4A5 antibody, Collagen alpha-5(IV) chain antibody
UniProt:	P29400
Pathways:	Skeletal Muscle Fiber Development

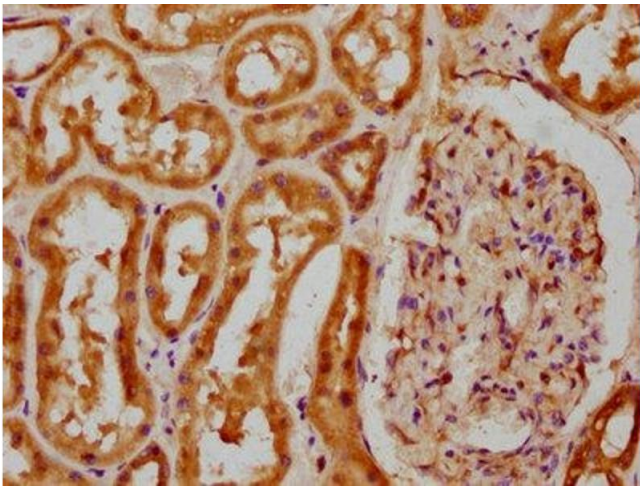
Application Details

Application Notes:	Recommended dilution: IHC:1:20-1:200,
Restrictions:	For Research Use only

Handling

Format:	Liquid
Buffer:	Preservative: 0.03 % Proclin 300 Constituents: 50 % Glycerol, 0.01M PBS, pH 7.4
Preservative:	ProClin
Precaution of Use:	This product contains ProClin: a POISONOUS AND HAZARDOUS SUBSTANCE which should be handled by trained staff only.
Storage:	-20 °C,-80 °C
Storage Comment:	Upon receipt, store at -20°C or -80°C. Avoid repeated freeze.

Images



Immunohistochemistry

Image 1. IHC image of ABIN7148257 diluted at 1:100 and staining in paraffin-embedded human kidney tissue performed on a Leica Bond™ system. After dewaxing and hydration, antigen retrieval was mediated by high pressure in a citrate buffer (pH 6.0). Section was blocked with 10 % normal goat serum 30 min at RT. Then primary antibody (1 % BSA) was incubated at 4 °C overnight. The primary is detected by a biotinylated secondary antibody and visualized using an HRP conjugated SP system.