

Datasheet for ABIN7148273
anti-CTHRC1 antibody (AA 31-243)[Go to Product page](#)

1 Image

Overview

Quantity:	100 µL
Target:	CTHRC1
Binding Specificity:	AA 31-243
Reactivity:	Human
Host:	Rabbit
Clonality:	Polyclonal
Conjugate:	This CTHRC1 antibody is un-conjugated
Application:	ELISA, Immunohistochemistry (IHC)

Product Details

Immunogen:	Recombinant Human Collagen triple helix repeat-containing protein 1 protein (31-243AA)
Isotype:	IgG
Cross-Reactivity:	Human
Purification:	>95%, Protein G purified

Target Details

Target:	CTHRC1
Alternative Name:	CTHRC1 (CTHRC1 Products)
Background:	Background: May act as a negative regulator of collagen matrix deposition. Aliases: Collagen triple helix repeat containing 1 antibody, Collagen triple helix repeat containing

Target Details

protein 1 antibody, Collagen triple helix repeat-containing protein 1 antibody, CTHR1_HUMAN antibody, Cthrc1 antibody, NMTC1 protein antibody, Protein NMTC1 antibody

UniProt: [Q96CG8](#)

Pathways: [Tube Formation](#)

Application Details

Application Notes: Recommended dilution: IHC:1:200-1:500,

Restrictions: For Research Use only

Handling

Format: Liquid

Buffer: Preservative: 0.03 % Proclin 300
Constituents: 50 % Glycerol, 0.01M PBS, pH 7.4

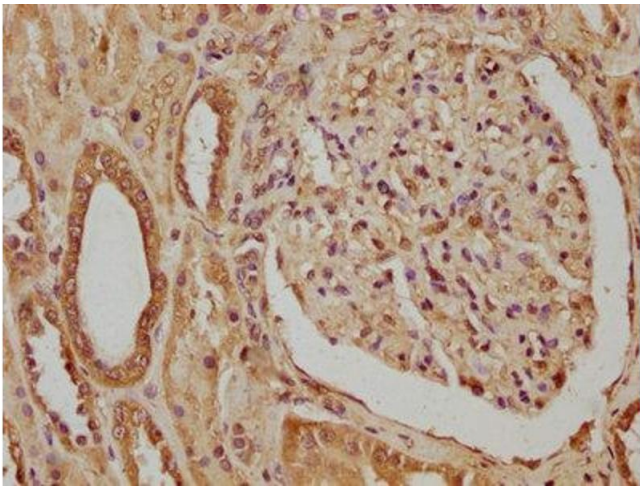
Preservative: ProClin

Precaution of Use: This product contains ProClin: a POISONOUS AND HAZARDOUS SUBSTANCE which should be handled by trained staff only.

Storage: -20 °C,-80 °C

Storage Comment: Upon receipt, store at -20°C or -80°C. Avoid repeated freeze.

Images



Immunohistochemistry

Image 1. IHC image of ABIN7148273 diluted at 1:320 and staining in paraffin-embedded human kidney tissue performed on a Leica Bond™ system. After dewaxing and hydration, antigen retrieval was mediated by high pressure in a citrate buffer (pH 6.0). Section was blocked with 10 % normal goat serum 30 min at RT. Then primary antibody (1 % BSA) was incubated at 4 °C overnight. The primary is detected by a biotinylated secondary antibody and visualized using an HRP conjugated SP system.