



[Go to Product page](#)

Datasheet for ABIN7148285  
**anti-MBL2 antibody (AA 28-277)**

2 Images

Overview

Quantity:	100 µg
Target:	MBL2
Binding Specificity:	AA 28-277
Reactivity:	Human
Host:	Rabbit
Clonality:	Polyclonal
Conjugate:	This MBL2 antibody is un-conjugated
Application:	Immunohistochemistry (IHC), ELISA

Product Details

Immunogen:	Recombinant Human Collectin-10 protein (28-277AA)
Isotype:	IgG
Cross-Reactivity:	Human
Purification:	>95%, Protein G purified

Target Details

Target:	MBL2
Alternative Name:	COLEC1 ( <a href="#">MBL2 Products</a> )
Background:	Background: Lectin that binds to various sugars: galactose > mannose = fucose > N-acetylglucosamine > N-acetylgalactosamine.

## Target Details

---

Aliases: CL-34 antibody, CL-L1 antibody, CLL1 antibody, COL10\_HUMAN antibody, Colec10 antibody, Collectin liver 1 antibody, Collectin liver protein 1 antibody, Collectin sub family member 10 (C-type lectin) antibody, Collectin sub family member 10 antibody, Collectin subfamily member 10 antibody, Collectin-10 antibody, Collectin-34 antibody, MGC118794 antibody, MGC118795 antibody, OTTHUMP00000228058 antibody

UniProt: [Q9Y6Z7](#)

Pathways: [Complement System](#), [Positive Regulation of Immune Effector Process](#)

## Application Details

---

Application Notes: Recommended dilution: IHC:1:200-1:500,

Restrictions: For Research Use only

## Handling

---

Format: Liquid

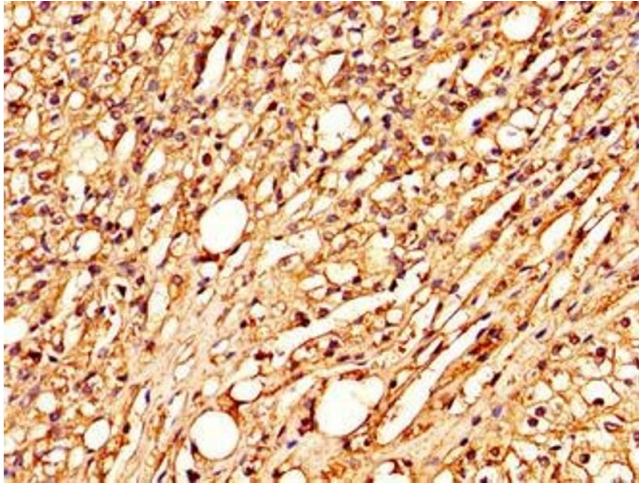
Buffer: Preservative: 0.03 % Proclin 300  
Constituents: 50 % Glycerol, 0.01M PBS, PH 7.4

Preservative: ProClin

Precaution of Use: This product contains ProClin: a POISONOUS AND HAZARDOUS SUBSTANCE which should be handled by trained staff only.

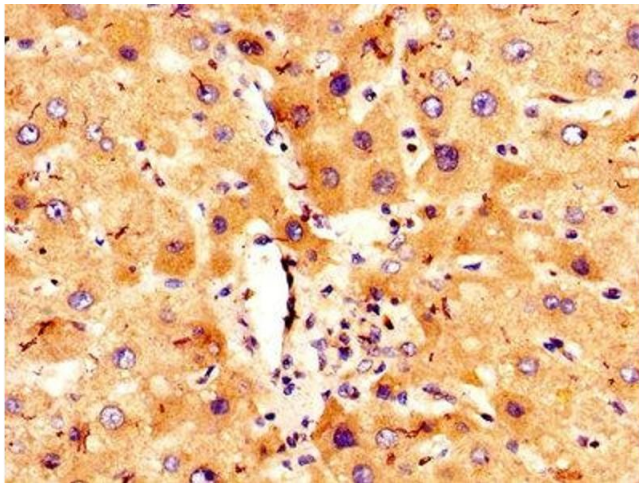
Storage: -20 °C,-80 °C

Storage Comment: Upon receipt, store at -20°C or -80°C. Avoid repeated freeze.



#### Immunohistochemistry

**Image 1.** IHC image of ABIN7148285 diluted at 1:300 and staining in paraffin-embedded human adrenal gland tissue performed on a Leica Bond™ system. After dewaxing and hydration, antigen retrieval was mediated by high pressure in a citrate buffer (pH 6.0). Section was blocked with 10% normal goat serum 30min at RT. Then primary antibody (1% BSA) was incubated at 4°C overnight. The primary is detected by a biotinylated secondary antibody and visualized using an HRP conjugated SP system.



#### Immunohistochemistry

**Image 2.** IHC image of ABIN7148285 diluted at 1:300 and staining in paraffin-embedded human liver tissue performed on a Leica Bond™ system. After dewaxing and hydration, antigen retrieval was mediated by high pressure in a citrate buffer (pH 6.0). Section was blocked with 10% normal goat serum 30min at RT. Then primary antibody (1% BSA) was incubated at 4°C overnight. The primary is detected by a biotinylated secondary antibody and visualized using an HRP conjugated SP system.