

Datasheet for ABIN7148289
anti-COLEC11 antibody (AA 26-271)[Go to Product page](#)

2 Images

Overview

Quantity:	100 µL
Target:	COLEC11
Binding Specificity:	AA 26-271
Reactivity:	Human
Host:	Rabbit
Clonality:	Polyclonal
Conjugate:	This COLEC11 antibody is un-conjugated
Application:	Western Blotting (WB), Immunohistochemistry (IHC), ELISA

Product Details

Immunogen:	Recombinant Human Collectin-11 protein (26-271AA)
Isotype:	IgG
Cross-Reactivity:	Human, Rat
Purification:	Antigen Affinity Purified

Target Details

Target:	COLEC11
Alternative Name:	COLEC11 (COLEC11 Products)
Background:	Background: Lectin that binds to various sugars including fucose and mannose. Has a higher affinity for fucose compared to mannose. Does not bind to glucose, N-acetylglucosamine and

Target Details

N-acetylgalactosamine. Also binds lipopolysaccharides (LPS). Involved in fundamental development serving as a guidance cue for neural crest cell migration (By similarity).
Aliases: CL K1 antibody, CL K1 I antibody, CL K1 II antibody, CL K1 IIa antibody, CL K1 IIb antibody, CL-K1 antibody, CLK1 antibody, COL11_HUMAN antibody, COLEC 11 antibody, COLEC11 antibody, Collectin 11 antibody, Collectin kidney I antibody, Collectin kidney protein 1 antibody, Collectin sub family member 11 antibody, Collectin-11 antibody, Collectin11 antibody, DKFZp686N1868 antibody, MGC129470 antibody, MGC129471 antibody, MGC3279 antibody

UniProt: [Q9BWP8](#)

Application Details

Application Notes: Recommended dilution: WB:1:500-1:2000, IHC:1:20-1:200,

Restrictions: For Research Use only

Handling

Format: Liquid

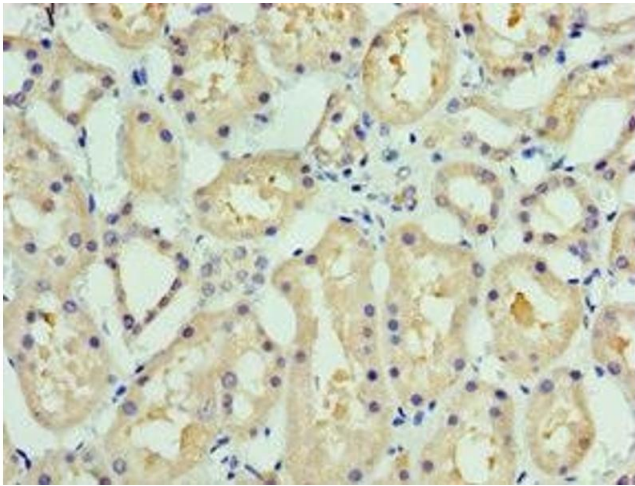
Buffer: PBS with 0.02 % sodium azide, 50 % glycerol, pH 7.3.

Preservative: Sodium azide

Precaution of Use: This product contains Sodium azide: a POISONOUS AND HAZARDOUS SUBSTANCE which should be handled by trained staff only.

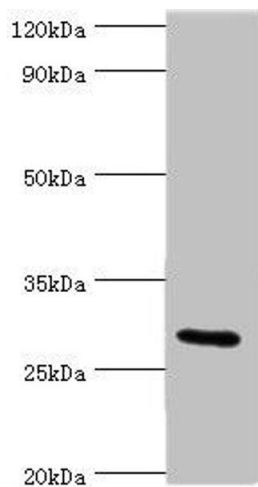
Storage: -20 °C, -80 °C

Storage Comment: Upon receipt, store at -20°C or -80°C. Avoid repeated freeze.



Immunohistochemistry

Image 1. Immunohistochemistry of paraffin-embedded human kidney tissue using ABIN7148289 at dilution of 1:100



Western Blotting

Image 2. Western blot All lanes: COLEC11 antibody at 4 μ g/mL + Rat liver tissue Secondary Goat polyclonal to rabbit IgG at 1/10000 dilution Predicted band size: 29, 27, 22, 30, 25, 24, 31 kDa Observed band size: 29 kDa