

Datasheet for ABIN7148298
anti-COMMD1 antibody (AA 1-190)[Go to Product page](#)

4 Images

Overview

Quantity:	100 µL
Target:	COMMD1
Binding Specificity:	AA 1-190
Reactivity:	Human
Host:	Rabbit
Clonality:	Polyclonal
Conjugate:	This COMMD1 antibody is un-conjugated
Application:	Western Blotting (WB), ELISA, Immunohistochemistry (IHC), Immunoprecipitation (IP)

Product Details

Immunogen:	Recombinant Human COMM domain-containing protein 1 protein (1-190AA)
Isotype:	IgG
Cross-Reactivity:	Human
Purification:	Antigen Affinity Purified

Target Details

Target:	COMMD1
Alternative Name:	COMMD1 (COMMD1 Products)
Background:	Background: Proposed scaffold protein that is implicated in diverse physiological processes and whose function may be in part linked to its ability to regulate ubiquitination of specific

Target Details

cellular proteins. Can modulate activity of cullin-RING E3 ubiquitin ligase (CRL) complexes by displacing CAND1, in vitro promotes CRL E3 activity and dissociates CAND1 from CUL1 and CUL2 (PubMed:21778237). Promotes ubiquitination of NF-kappa-B subunit RELA and its subsequent proteasomal degradation. Down-regulates NF-kappa-B activity (PubMed:15799966, PubMed:17183367, PubMed:20048074). Involved in the regulation of membrane expression and ubiquitination of SLC12A2 (PubMed:23515529). Modulates Na(+) transport in epithelial cells by regulation of apical cell surface expression of amiloride-sensitive sodium channel (ENaC) subunits and by promoting their ubiquitination presumably involving NEDD4L. Promotes the localization of SCNN1D to recycling endosomes (PubMed:14645214, PubMed:20237237, PubMed:21741370). Promotes CFTR cell surface expression through regulation of its ubiquitination (PubMed:21483833). Down-regulates SOD1 activity by interfering with its homodimerization (PubMed:20595380). Plays a role in copper ion homeostasis. Involved in copper-dependent ATP7A trafficking between the trans-Golgi network and vesicles in the cell periphery, the function is proposed to depend on its association within the CCC complex and cooperation with the WASH complex on early endosomes (PubMed:25355947). Can bind one copper ion per monomer (PubMed:17309234). May function to facilitate biliary copper excretion within hepatocytes. Binds to phosphatidylinositol 4,5-bisphosphate (PtdIns(4,5)P2) (PubMed:18940794). Involved in the regulation of HIF1A-mediated transcription, competes with ARNT/Hif-1-beta for binding to HIF1A resulting in decreased DNA binding and impaired transcriptional activation by HIF-1 (PubMed:20458141).

Aliases: C2orf5 antibody, COMD1 antibody, COMD1_HUMAN antibody, COMM domain-containing protein 1 antibody, COMMD1 antibody, Copper metabolism (Murr1) domain containing 1 antibody, Copper metabolism domain containing 1 antibody, Copper metabolism gene MURR1 antibody, Copper metabolism MURR1 domain-containing protein 1 antibody, MGC27155 antibody, MURR1 antibody, Protein Murr1 antibody

UniProt: [Q8N668](#)

Pathways: [Transition Metal Ion Homeostasis](#)

Application Details

Application Notes: Recommended dilution: WB:1:1000-1:5000, IHC:1:20-1:200, IP:1:200-1:2000,

Restrictions: For Research Use only

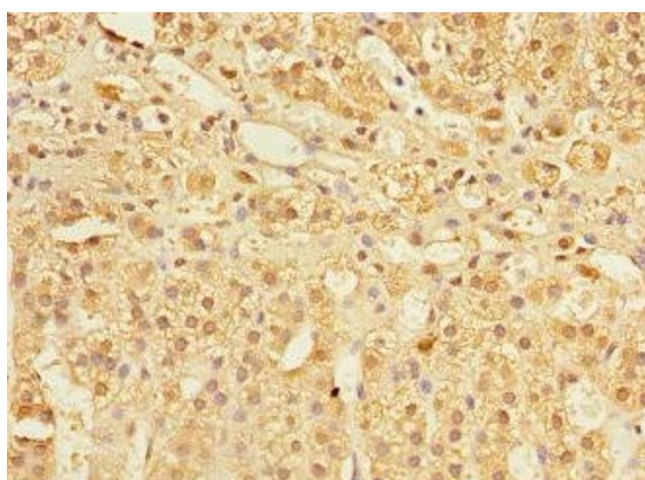
Handling

Format: Liquid

Handling

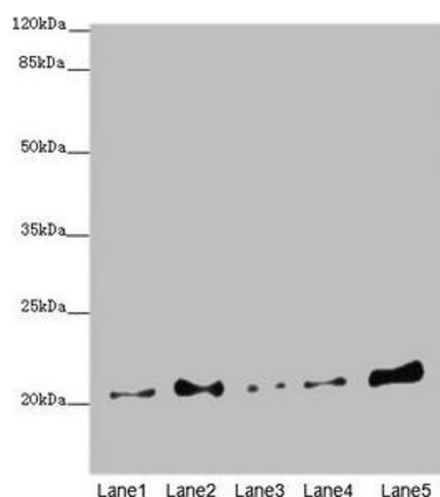
Buffer:	PBS with 0.02 % sodium azide, 50 % glycerol, pH 7.3.
Preservative:	Sodium azide
Precaution of Use:	This product contains Sodium azide: a POISONOUS AND HAZARDOUS SUBSTANCE which should be handled by trained staff only.
Storage:	-20 °C,-80 °C
Storage Comment:	Upon receipt, store at -20°C or -80°C. Avoid repeated freeze.

Images



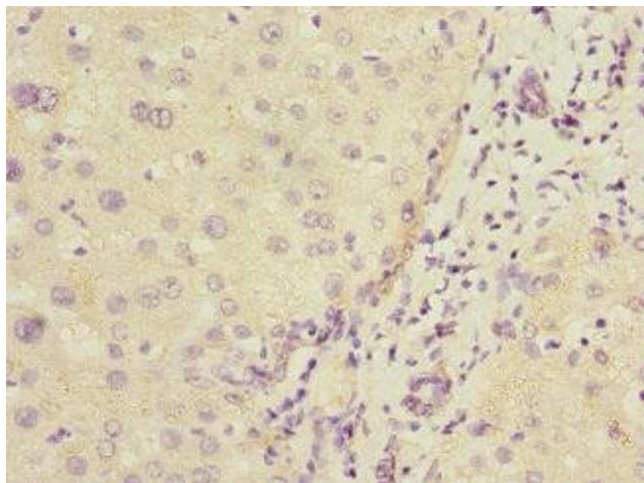
Immunohistochemistry

Image 1. Immunohistochemistry of paraffin-embedded human adrenal gland tissue using ABIN7148298 at dilution of 1:100



Western Blotting

Image 2. Western blot All lanes: COMMD1 antibody at 5.36 µg/mL Lane 1: A549 whole cell lysate Lane 2: Jurkat whole cell lysate Lane 3: MCF-7 whole cell lysate Lane 4: Hela whole cell lysate Lane 5: HepG2 whole cell lysate Secondary Goat polyclonal to rabbit IgG at 1/10000 dilution Predicted band size: 22, 18 kDa Observed band size: 22 kDa



Immunohistochemistry

Image 3. Immunohistochemistry of paraffin-embedded human liver cancer using ABIN7148298 at dilution of 1:100

Please check the [product details page](#) for more images. Overall 4 images are available for ABIN7148298.