



[Go to Product page](#)

Datasheet for ABIN7148332
anti-C1QA antibody (AA 26-125)

3 Images

Overview

Quantity:	100 µg
Target:	C1QA
Binding Specificity:	AA 26-125
Reactivity:	Human
Host:	Rabbit
Clonality:	Polyclonal
Conjugate:	This C1QA antibody is un-conjugated
Application:	Immunohistochemistry (IHC), ELISA, Immunofluorescence (IF)

Product Details

Immunogen:	Recombinant Human Complement C1q subcomponent subunit A protein (26-125AA)
Isotype:	IgG
Cross-Reactivity:	Human
Purification:	>95%, Protein G purified

Target Details

Target:	C1QA
Alternative Name:	C1QA (C1QA Products)
Background:	Background: C1q associates with the proenzymes C1r and C1s to yield C1, the first component of the serum complement system. The collagen-like regions of C1q interact with the Ca(2+)-

Target Details

dependent C1r(2)C1s(2) proenzyme complex, and efficient activation of C1 takes place on interaction of the globular heads of C1q with the Fc regions of IgG or IgM antibody present in immune complexes.

Aliases: C1qa antibody, C1QA_HUMAN antibody, Complement C1q subcomponent subunit A antibody, Complement component 1 q subcomponent A chain antibody, Complement component 1 q subcomponent alpha polypeptide antibody, Complement component C1q A chain antibody

UniProt: [P02745](#)

Pathways: [Complement System](#)

Application Details

Application Notes: Recommended dilution: IHC:1:20-1:200, IF:1:50-1:200,

Restrictions: For Research Use only

Handling

Format: Liquid

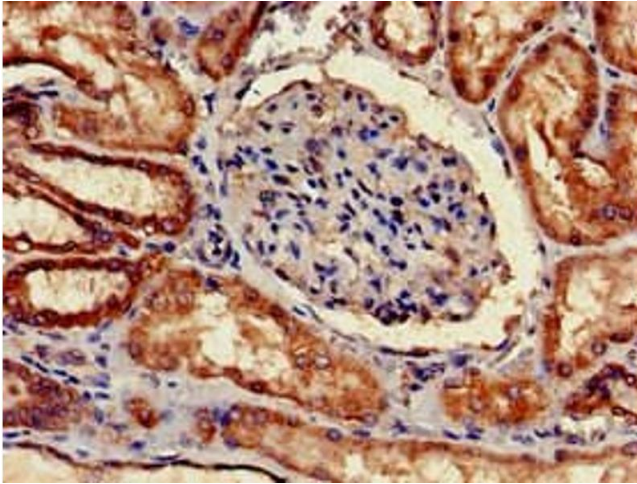
Buffer: Preservative: 0.03 % Proclin 300
Constituents: 50 % Glycerol, 0.01M PBS, pH 7.4

Preservative: ProClin

Precaution of Use: This product contains ProClin: a POISONOUS AND HAZARDOUS SUBSTANCE which should be handled by trained staff only.

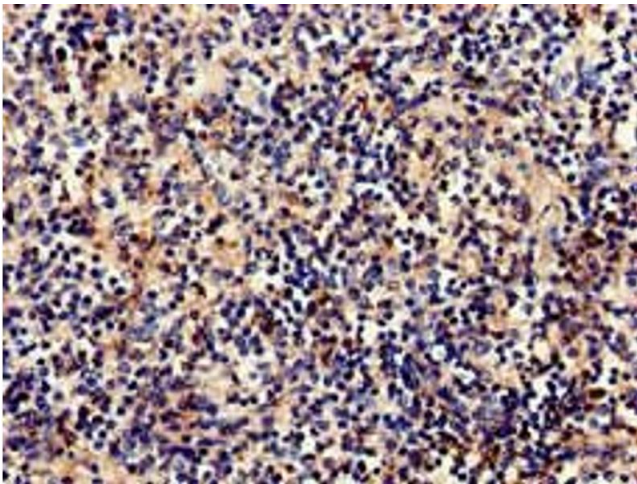
Storage: -20 °C,-80 °C

Storage Comment: Upon receipt, store at -20°C or -80°C. Avoid repeated freeze.



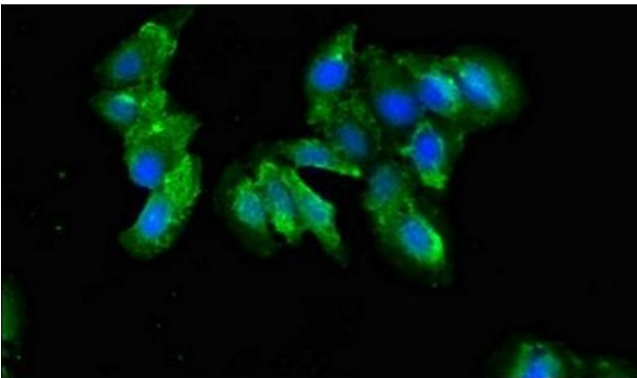
Immunohistochemistry

Image 1. Immunohistochemistry of paraffin-embedded human kidney tissue using ABIN7148332 at dilution of 1:100



Immunohistochemistry

Image 2. Immunohistochemistry of paraffin-embedded human spleen tissue using ABIN7148332 at dilution of 1:100



Immunofluorescence

Image 3. Immunofluorescent analysis of HeLa cells using ABIN7148332 at dilution of 1:100 and Alexa Fluor 488-conjugated AffiniPure Goat Anti-Rabbit IgG(H+L)