



Datasheet for ABIN7148349  
**anti-CTRP6 antibody (AA 47-278)**



[Go to Product page](#)

3 Images

Overview

Quantity:	100 µg
Target:	CTRP6 (C1QTNF6)
Binding Specificity:	AA 47-278
Reactivity:	Human
Host:	Rabbit
Clonality:	Polyclonal
Conjugate:	This CTRP6 antibody is un-conjugated
Application:	Western Blotting (WB), ELISA, Immunohistochemistry (IHC)

Product Details

Immunogen:	Recombinant Human Complement C1q tumor necrosis factor-related protein 6 protein (47-278AA)
Isotype:	IgG
Cross-Reactivity:	Human, Mouse
Purification:	>95%, Protein G purified

Target Details

Target:	CTRP6 (C1QTNF6)
Alternative Name:	C1QTNF6 ( <a href="#">C1QTNF6 Products</a> )
Background:	C1q and tumor necrosis factor related protein 6 antibody, C1QT6_HUMAN antibody, C1qtnf6

## Target Details

antibody, Complement C1q tumor necrosis factor related protein 6 antibody, Complement C1q tumor necrosis factor-related protein 6 antibody, CTRP 6 antibody, CTRP6 antibody, OTTHUMP00000197772 antibody, OTTHUMP00000197774 antibody, PRO1151 antibody, UNQ581 antibody, ZACRP6 antibody

UniProt: [Q9BX19](#)

## Application Details

Application Notes: Recommended dilution: WB:1:1000-1:5000, IHC:1:20-1:200,

Restrictions: For Research Use only

## Handling

Format: Liquid

Buffer: Preservative: 0.03 % Proclin 300  
Constituents: 50 % Glycerol, 0.01M PBS, PH 7.4

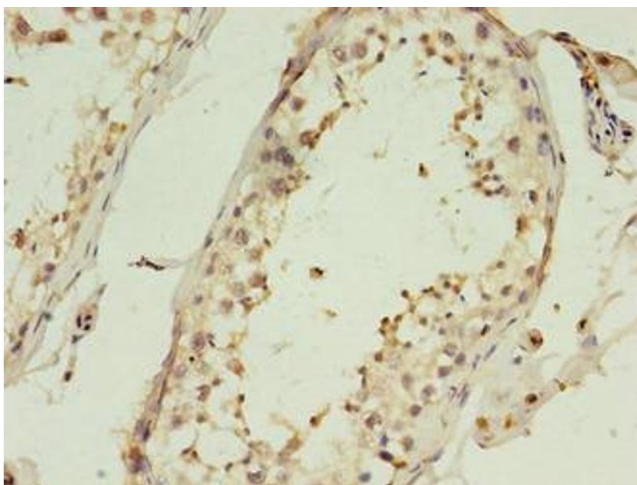
Preservative: ProClin

Precaution of Use: This product contains ProClin: a POISONOUS AND HAZARDOUS SUBSTANCE which should be handled by trained staff only.

Storage: -20 °C,-80 °C

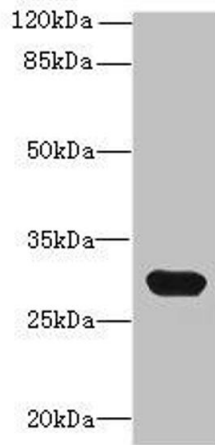
Storage Comment: Upon receipt, store at -20°C or -80°C. Avoid repeated freeze.

## Images



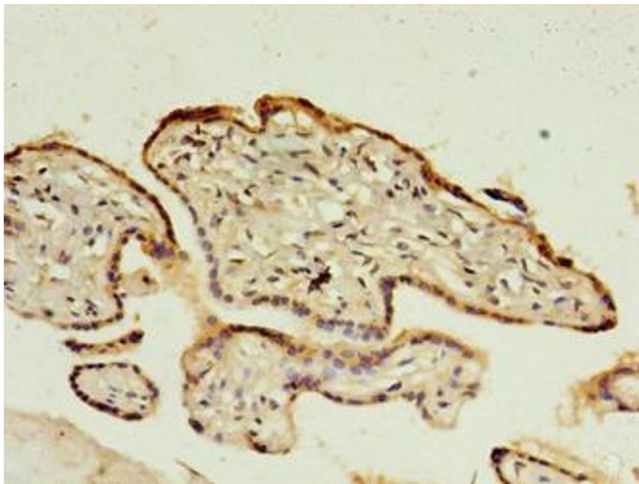
### Immunohistochemistry

**Image 1.** Immunohistochemistry of paraffin-embedded human testis tissue using ABIN7148349 at dilution of 1:100



### Western Blotting

**Image 2.** Western blot All lanes: C1QTNF6 antibody at 8  $\mu$ g/mL + Mouse brain tissue Secondary Goat polyclonal to rabbit IgG at 1/10000 dilution Predicted band size: 29, 31, 18 kDa Observed band size: 29 kDa



### Immunohistochemistry

**Image 3.** Immunohistochemistry of paraffin-embedded human placenta tissue using ABIN7148349 at dilution of 1:100