



[Go to Product page](#)

Datasheet for ABIN7148353
anti-C1R antibody (AA 65-192)

3 Images

Overview

Quantity:	100 µg
Target:	C1R
Binding Specificity:	AA 65-192
Reactivity:	Human
Host:	Rabbit
Clonality:	Polyclonal
Conjugate:	This C1R antibody is un-conjugated
Application:	Western Blotting (WB), ELISA, Immunohistochemistry (IHC), Immunofluorescence (IF)

Product Details

Immunogen:	Recombinant Human Complement C1r subcomponent protein (65-192AA)
Isotype:	IgG
Cross-Reactivity:	Human, Rat
Purification:	>95%, Protein G purified

Target Details

Target:	C1R
Alternative Name:	C1R (C1R Products)
Background:	Background: C1r B chain is a serine protease that combines with C1q and C1s to form C1, the first component of the classical pathway of the complement system.

Target Details

Aliases: C1 R antibody, C1R antibody, C1R_HUMAN antibody, Complement C1r antibody, Complement C1r subcomponent antibody, Complement C1r subcomponent light chain antibody, Complement C1r subcomponent precursor antibody, Complement component 1 r subcomponent antibody, Complement component 1 subcomponent r antibody

UniProt: [P00736](#)

Pathways: [Complement System](#)

Application Details

Application Notes: Recommended dilution: WB:1:500-1:5000, IHC:1:20-1:200, IF:1:50-1:200,

Restrictions: For Research Use only

Handling

Format: Liquid

Buffer: Preservative: 0.03 % Proclin 300
Constituents: 50 % Glycerol, 0.01M PBS, pH 7.4

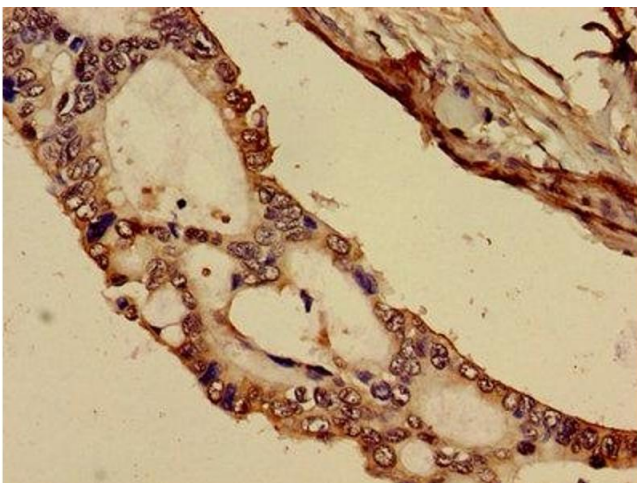
Preservative: ProClin

Precaution of Use: This product contains ProClin: a POISONOUS AND HAZARDOUS SUBSTANCE which should be handled by trained staff only.

Storage: -20 °C,-80 °C

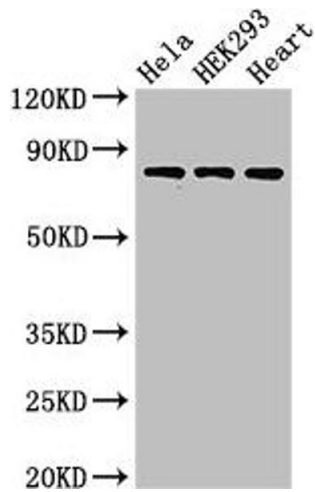
Storage Comment: Upon receipt, store at -20°C or -80°C. Avoid repeated freeze.

Images



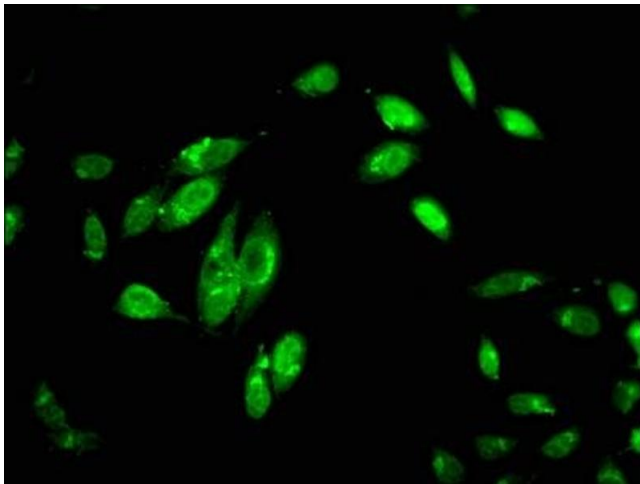
Immunohistochemistry

Image 1. Immunohistochemistry of paraffin-embedded human pancreatic cancer using ABIN7148353 at dilution of 1:100



Western Blotting

Image 2. Western Blot Positive WB detected in: HeLa whole cell lysate, HEK293 whole cell lysate, Rat heart tissue All lanes: C1R antibody at 3 µg/mL Secondary Goat polyclonal to rabbit IgG at 1/50000 dilution Predicted band size: 81 kDa Observed band size: 81 kDa



Immunofluorescence

Image 3. Immunofluorescent analysis of HeLa cells using ABIN7148353 at dilution of 1:100 and Alexa Fluor 488-conjugated AffiniPure Goat Anti-Rabbit IgG(H+L)