

Datasheet for ABIN7148361
anti-C4A antibody (AA 1027-1186)[Go to Product page](#)

2 Images

Overview

Quantity:	100 µg
Target:	C4A (C4a)
Binding Specificity:	AA 1027-1186
Reactivity:	Human
Host:	Rabbit
Clonality:	Polyclonal
Conjugate:	This C4A antibody is un-conjugated
Application:	Western Blotting (WB), Immunohistochemistry (IHC), ELISA

Product Details

Immunogen:	Recombinant Human Complement C4-A protein (1027-1186AA)
Isotype:	IgG
Cross-Reactivity:	Human
Purification:	>95%, Protein G purified

Target Details

Target:	C4A (C4a)
Alternative Name:	C4A (C4a Products)
Background:	Background: Non-enzymatic component of C3 and C5 convertases and thus essential for the propagation of the classical complement pathway. Covalently binds to immunoglobulins and

Target Details

immune complexes and enhances the solubilization of immune aggregates and the clearance of IC through CR1 on erythrocytes. C4A isotype is responsible for effective binding to form amide bonds with immune aggregates or protein antigens, while C4B isotype catalyzes the transacylation of the thioester carbonyl group to form ester bonds with carbohydrate antigens. Aliases: Acidic C4 antibody, Acidic complement C4 antibody, Basic C4 antibody, Basic complement C4 antibody, C3 and PZP-like alpha-2-macroglobulin domain-containing protein 2 antibody, C3 and PZP-like alpha-2-macroglobulin domain-containing protein 3 antibody, C4, Chido form antibody, C4, Rodgers form antibody, C4A anaphylatoxin antibody, C4A antibody, C4A2 antibody, C4A3 antibody, C4A4 antibody, C4A6 antibody, C4AD antibody, C4B antibody, C4B_2 antibody, C4B1 antibody, C4B12 antibody, C4B2 antibody, C4B3 antibody, C4BD antibody, C4F antibody, C4S antibody, CH antibody, Chido form of C4 antibody, CO4 antibody, CO4A_HUMAN antibody, Complement C4 A antibody, Complement C4 B antibody, Complement C4 gamma chain antibody, complement C4-A antibody, complement C4-B antibody, complement C4-B-like antibody, complement C4B1a antibody, Complement component 4A (Rodgers blood group) antibody, Complement component 4A antibody, complement component 4B (Chido blood group) antibody, complement component 4B (Chido blood group), copy 2 antibody, Complement component 4B (Chido blood group) antibody, Complement component 4B antibody, Complement component 4F antibody, Complement component 4S antibody, CPAMD2 antibody, CPAMD3 antibody, RG antibody, Rodgers form of C4 antibody

UniProt: [P0C0L4](#)

Pathways: [Complement System](#)

Application Details

Application Notes: Recommended dilution: WB:1:500-1:5000, IHC:1:500-1:1000,

Restrictions: For Research Use only

Handling

Format: Liquid

Buffer: Preservative: 0.03 % Proclin 300
Constituents: 50 % Glycerol, 0.01M PBS, pH 7.4

Preservative: ProClin

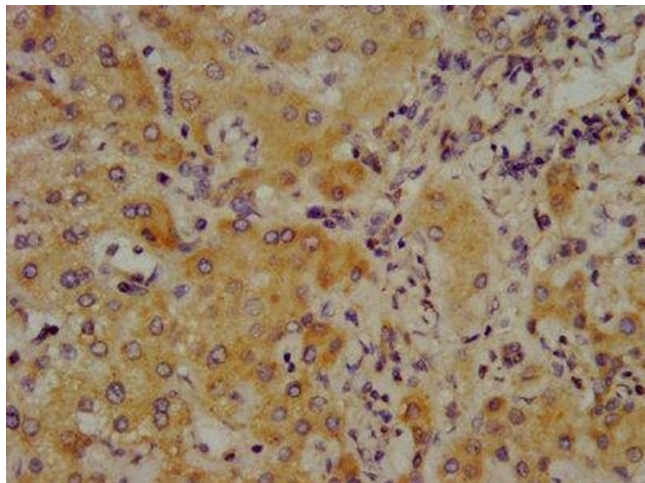
Precaution of Use: This product contains ProClin: a POISONOUS AND HAZARDOUS SUBSTANCE which should be handled by trained staff only.

Handling

Storage: -20 °C, -80 °C

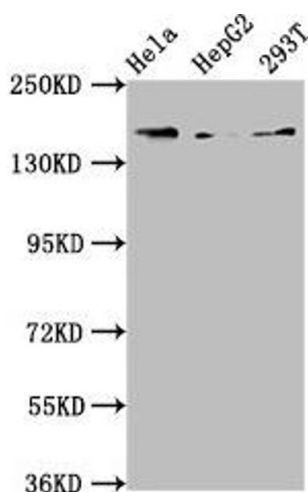
Storage Comment: Upon receipt, store at -20°C or -80°C. Avoid repeated freeze.

Images



Immunohistochemistry

Image 1. IHC image of ABIN7148361 diluted at 1:700 and staining in paraffin-embedded human liver cancer performed on a Leica Bond™ system. After dewaxing and hydration, antigen retrieval was mediated by high pressure in a citrate buffer (pH 6.0). Section was blocked with 10 % normal goat serum 30 min at RT. Then primary antibody (1 % BSA) was incubated at 4 °C overnight. The primary is detected by a biotinylated secondary antibody and visualized using an HRP conjugated SP system.



Western Blotting

Image 2. Western Blot Positive WB detected in: HeLa whole cell lysate, HepG2 whole cell lysate, 293T whole cell lysate. All lanes: C4A antibody at 3.9 µg/mL. Secondary Goat polyclonal to rabbit IgG at 1/50000 dilution. Predicted band size: 193, 188 kDa. Observed band size: 193 kDa.