



[Go to Product page](#)

Datasheet for ABIN7148380

## anti-Complement Factor B antibody (AA 26-751)

### 3 Images

#### Overview

Quantity:	100 µg
Target:	Complement Factor B (CFB)
Binding Specificity:	AA 26-751
Reactivity:	Human
Host:	Rabbit
Clonality:	Polyclonal
Conjugate:	This Complement Factor B antibody is un-conjugated
Application:	Western Blotting (WB), Immunohistochemistry (IHC), ELISA

#### Product Details

Immunogen:	Recombinant Human Complement factor B protein (26-751AA)
Isotype:	IgG
Cross-Reactivity:	Human
Purification:	>95%, Protein G purified

#### Target Details

Target:	Complement Factor B (CFB)
Alternative Name:	CFB ( <a href="#">CFB Products</a> )
Background:	Background: Factor B which is part of the alternate pathway of the complement system is cleaved by factor D into 2 fragments: Ba and Bb. Bb, a serine protease, then combines with

## Target Details

---

complement factor 3b to generate the C3 or C5 convertase. It has also been implicated in proliferation and differentiation of preactivated B-lymphocytes, rapid spreading of peripheral blood monocytes, stimulation of lymphocyte blastogenesis and lysis of erythrocytes. Ba inhibits the proliferation of preactivated B-lymphocytes.

Aliases: AHUS4 antibody, B factor properdin antibody, BF antibody, BFD antibody, C3 proaccelerator antibody, C3 proactivator antibody, C3/C5 convertase antibody, CFAB antibody, CFAB\_HUMAN antibody, CFB antibody, Complement Factor B antibody, Complement factor B Bb fragment antibody, FB antibody, FBI12 antibody, GBG antibody, Glycine rich beta glycoprotein antibody, Glycine-rich beta glycoprotein antibody, H2 Bf antibody, H2BF antibody, PBF2 antibody, Properdin factor B antibody

---

UniProt: [P00751](#)

---

Pathways: [Complement System](#), [Proton Transport](#), [Ribonucleoside Biosynthetic Process](#)

## Application Details

---

Application Notes: Recommended dilution: WB:1:1000-1:5000, IHC:1:20-1:200,

---

Restrictions: For Research Use only

## Handling

---

Format: Liquid

---

Buffer: Preservative: 0.03 % Proclin 300  
Constituents: 50 % Glycerol, 0.01M PBS, PH 7.4

---

Preservative: ProClin

---

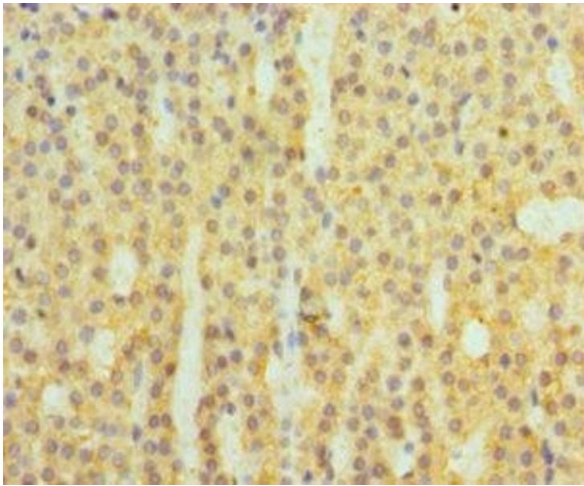
Precaution of Use: This product contains ProClin: a POISONOUS AND HAZARDOUS SUBSTANCE which should be handled by trained staff only.

---

Storage: -20 °C,-80 °C

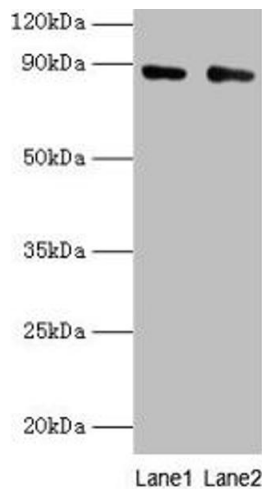
---

Storage Comment: Upon receipt, store at -20°C or -80°C. Avoid repeated freeze.



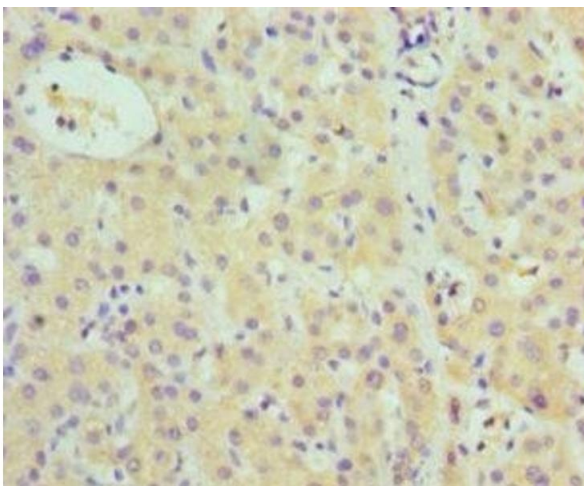
### Immunohistochemistry

**Image 1.** Immunohistochemistry of paraffin-embedded human adrenal gland tissue using ABIN7148380 at dilution of 1:100



### Western Blotting

**Image 2.** Western blot All lanes: CFB antibody at 2 µg/mL  
Lane 1: K562 whole cell lysate Lane 2: HepG2 whole cell lysate  
Secondary Goat polyclonal to rabbit IgG at 1/10000 dilution  
Predicted band size: 86, 69 kDa Observed band size: 86 kDa



### Immunohistochemistry

**Image 3.** Immunohistochemistry of paraffin-embedded human liver cancer using ABIN7148380 at dilution of 1:100