

Datasheet for ABIN7148386
anti-CFHR1 antibody (AA 132-221)[Go to Product page](#)

2 Images

Overview

Quantity:	100 µg
Target:	CFHR1
Binding Specificity:	AA 132-221
Reactivity:	Human
Host:	Rabbit
Clonality:	Polyclonal
Conjugate:	This CFHR1 antibody is un-conjugated
Application:	Immunohistochemistry (IHC), ELISA

Product Details

Immunogen:	Recombinant Human Complement factor H-related protein 1 protein (132-221AA)
Isotype:	IgG
Cross-Reactivity:	Human
Purification:	>95%, Protein G purified

Target Details

Target:	CFHR1
Alternative Name:	CFHR1 (CFHR1 Products)
Background:	Background: Involved in complement regulation. The dimerized forms have avidity for tissue-bound complement fragments and efficiently compete with the physiological complement

Target Details

inhibitor CFH. Can associate with lipoproteins and may play a role in lipid metabolism.

Aliases: CFHL antibody, CFHL1 antibody, CFHL1P antibody, CFHR1 antibody, CFHR1P antibody, Complement factor H related 1 antibody, Complement factor H related 1 pseudogene antibody, Complement factor H related protein 1 precursor antibody, Complement factor H-related protein 1 antibody, FHR 1 antibody, FHR-1 antibody, FHR1 antibody, FHR1_HUMAN antibody, H factor (complement) like 1 antibody, H factor (complement) like 2 antibody, H factor like protein 1 antibody, H factor-like protein 1 antibody, H-factor-like 1 antibody, H36 1 antibody, H36 2 antibody, H36 antibody, HFL1 antibody, HFL2 antibody, MGC104329 antibody

UniProt: [Q03591](#)

Application Details

Application Notes: Recommended dilution: IHC:1:200-1:500,

Restrictions: For Research Use only

Handling

Format: Liquid

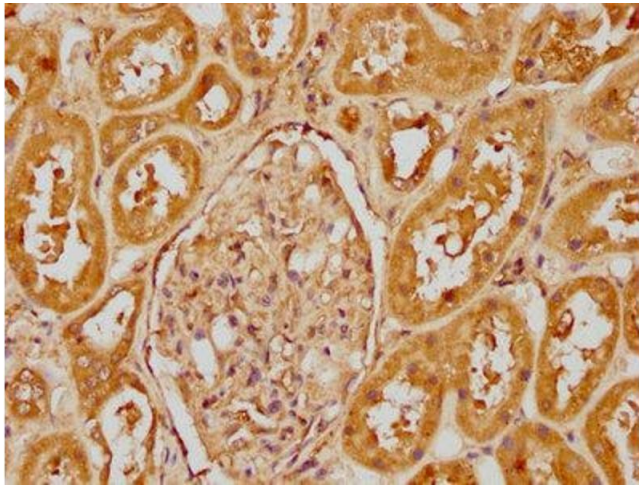
Buffer: Preservative: 0.03 % Proclin 300
Constituents: 50 % Glycerol, 0.01M PBS, pH 7.4

Preservative: ProClin

Precaution of Use: This product contains ProClin: a POISONOUS AND HAZARDOUS SUBSTANCE which should be handled by trained staff only.

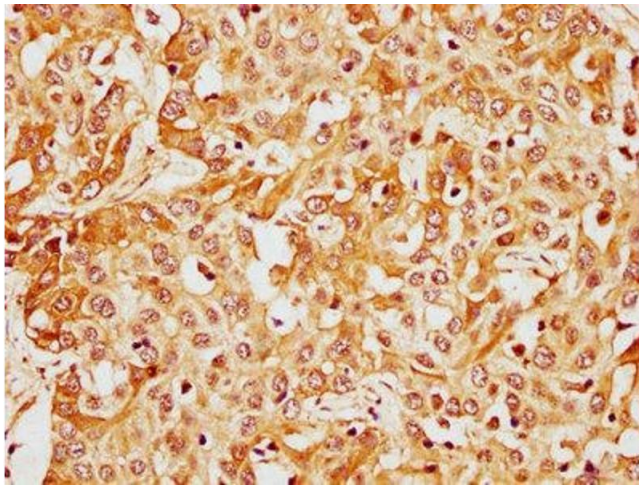
Storage: -20 °C,-80 °C

Storage Comment: Upon receipt, store at -20°C or -80°C. Avoid repeated freeze.



Immunohistochemistry

Image 1. IHC image of ABIN7148386 diluted at 1:400 and staining in paraffin-embedded human kidney tissue performed on a Leica Bond™ system. After dewaxing and hydration, antigen retrieval was mediated by high pressure in a citrate buffer (pH 6.0). Section was blocked with 10 % normal goat serum 30 min at RT. Then primary antibody (1 % BSA) was incubated at 4 °C overnight. The primary is detected by a biotinylated secondary antibody and visualized using an HRP conjugated SP system.



Immunohistochemistry

Image 2. IHC image of ABIN7148386 diluted at 1:400 and staining in paraffin-embedded human liver cancer tissue performed on a Leica Bond™ system. After dewaxing and hydration, antigen retrieval was mediated by high pressure in a citrate buffer (pH 6.0). Section was blocked with 10 % normal goat serum 30 min at RT. Then primary antibody (1 % BSA) was incubated at 4 °C overnight. The primary is detected by a biotinylated secondary antibody and visualized using an HRP conjugated SP system.