

Datasheet for ABIN7148390
anti-RHBDF1 antibody (AA 132-221)[Go to Product page](#)

2 Images

Overview

Quantity:	100 µg
Target:	RHBDF1
Binding Specificity:	AA 132-221
Reactivity:	Human
Host:	Rabbit
Clonality:	Polyclonal
Conjugate:	This RHBDF1 antibody is un-conjugated
Application:	ELISA, Immunohistochemistry (IHC)

Product Details

Immunogen:	Recombinant Human Complement factor H-related protein 1 protein (132-221AA)
Isotype:	IgG
Cross-Reactivity:	Human
Purification:	>95%, Protein G purified

Target Details

Target:	RHBDF1
Alternative Name:	RHBDF1 (RHBDF1 Products)
Background:	Background: Rhomboid protease-like protein which has no protease activity but regulates the secretion of several ligands of the epidermal growth factor receptor. Indirectly activates the

Target Details

epidermal growth factor receptor signaling pathway and may thereby regulate sleep, cell survival, proliferation and migration.

Aliases: RHBDF1 antibody, C16orf8 antibody, DIST1 antibody, IRHOM1 antibody, Inactive rhomboid protein 1 antibody, iRhom1 antibody, Epidermal growth factor receptor-related protein antibody, Rhomboid 5 homolog 1 antibody, Rhomboid family member 1 antibody, p100hRho antibody

UniProt: [Q96CC6](#)

Pathways: [EGFR Signaling Pathway](#), [Growth Factor Binding](#)

Application Details

Application Notes: Recommended dilution: IHC:1:200-1:500,

Restrictions: For Research Use only

Handling

Format: Liquid

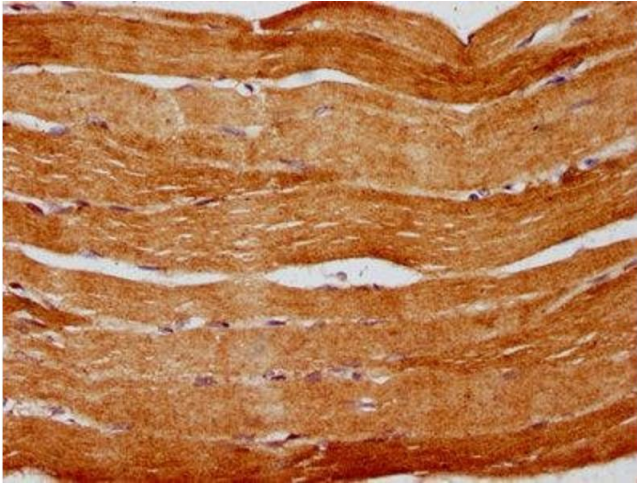
Buffer: Preservative: 0.03 % Proclin 300
Constituents: 50 % Glycerol, 0.01M PBS, pH 7.4

Preservative: ProClin

Precaution of Use: This product contains ProClin: a POISONOUS AND HAZARDOUS SUBSTANCE which should be handled by trained staff only.

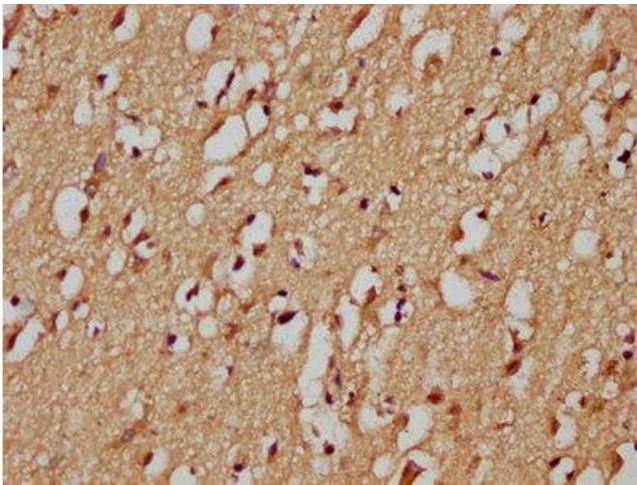
Storage: -20 °C, -80 °C

Storage Comment: Upon receipt, store at -20°C or -80°C. Avoid repeated freeze.



Immunohistochemistry

Image 1. IHC image of ABIN7148390 diluted at 1:200 and staining in paraffin-embedded human skeletal muscle tissue performed on a Leica Bond™ system. After dewaxing and hydration, antigen retrieval was mediated by high pressure in a citrate buffer (pH 6.0). Section was blocked with 10% normal goat serum 30min at RT. Then primary antibody (1% BSA) was incubated at 4°C overnight. The primary is detected by a biotinylated secondary antibody and visualized using an HRP conjugated SP system.



Immunohistochemistry

Image 2. IHC image of ABIN7148390 diluted at 1:200 and staining in paraffin-embedded human brain tissue performed on a Leica Bond™ system. After dewaxing and hydration, antigen retrieval was mediated by high pressure in a citrate buffer (pH 6.0). Section was blocked with 10% normal goat serum 30min at RT. Then primary antibody (1% BSA) was incubated at 4°C overnight. The primary is detected by a biotinylated secondary antibody and visualized using an HRP conjugated SP system.