

Datasheet for ABIN7148394  
**anti-CFHR2 antibody (AA 20-269)**[Go to Product page](#)

## 2 Images

## Overview

Quantity:	100 µg
Target:	CFHR2
Binding Specificity:	AA 20-269
Reactivity:	Human
Host:	Rabbit
Clonality:	Polyclonal
Conjugate:	This CFHR2 antibody is un-conjugated
Application:	Western Blotting (WB), ELISA, Immunohistochemistry (IHC)

## Product Details

Immunogen:	Recombinant Human Complement factor H-related protein 2 protein (20-269AA)
Isotype:	IgG
Cross-Reactivity:	Human
Purification:	>95%, Protein G purified

## Target Details

Target:	CFHR2
Alternative Name:	CFHR2 ( <a href="#">CFHR2 Products</a> )
Background:	Background: Involved in complement regulation. The dimerized forms have avidity for tissue-bound complement fragments and efficiently compete with the physiological complement

## Target Details

inhibitor CFH. Can associate with lipoproteins and may play a role in lipid metabolism.

Aliases: CFHL2 antibody, CFHR2 antibody, Complement factor H related protein 2 antibody, Complement factor H-related 2 antibody, Complement factor H-related protein 2 antibody, DDESK59 antibody, Factor H-related gene 2 antibody, FHR 2 antibody, FHR-2 antibody, FHR2 antibody, FHR2\_HUMAN antibody, H factor (complement)-like 3 antibody, H factor like 3 antibody, H factor like protein 2 antibody, H factor-like 3 antibody, H factor-like protein 2 antibody, HFL3 antibody

UniProt: [P36980](#)

## Application Details

Application Notes: Recommended dilution: WB:1:500-1:5000, IHC:1:20-1:200,

Restrictions: For Research Use only

## Handling

Format: Liquid

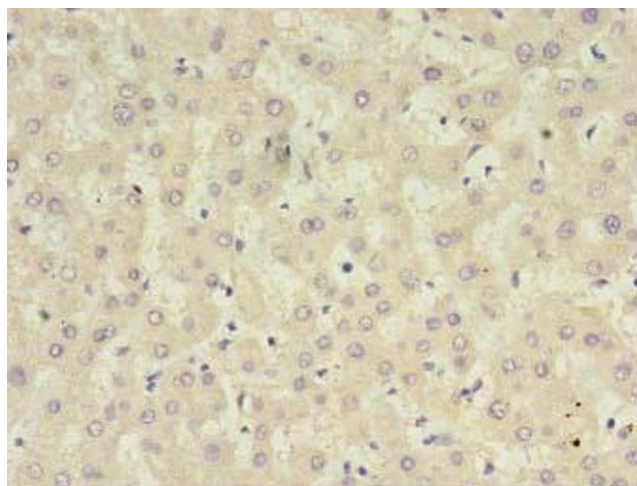
Buffer: Preservative: 0.03 % Proclin 300  
Constituents: 50 % Glycerol, 0.01M PBS, PH 7.4

Preservative: ProClin

Precaution of Use: This product contains ProClin: a POISONOUS AND HAZARDOUS SUBSTANCE which should be handled by trained staff only.

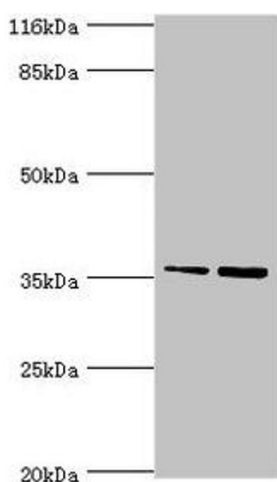
Storage: -20 °C, -80 °C

Storage Comment: Upon receipt, store at -20°C or -80°C. Avoid repeated freeze.



### Immunohistochemistry

**Image 1.** Immunohistochemistry of paraffin-embedded human liver tissue using ABIN7148394 at dilution of 1:100



### Western Blotting

**Image 2.** Western blot All lanes: CFHR2 antibody at 2 µg/mL  
Lane 1: Hela whole cell lysate Lane 2: 293T whole cell lysate  
Secondary Goat polyclonal to rabbit IgG at 1/10000 dilution  
Predicted band size: 31, 28 kDa Observed band size: 36 kDa