

Datasheet for ABIN7148399
anti-CFHR5 antibody (AA 374-569)[Go to Product page](#)

2 Images

Overview

Quantity:	100 µL
Target:	CFHR5
Binding Specificity:	AA 374-569
Reactivity:	Human
Host:	Rabbit
Clonality:	Polyclonal
Conjugate:	This CFHR5 antibody is un-conjugated
Application:	Western Blotting (WB), ELISA, Immunohistochemistry (IHC)

Product Details

Immunogen:	Recombinant Human Complement factor H-related protein 5 protein (374-569AA)
Isotype:	IgG
Cross-Reactivity:	Human
Purification:	Antigen Affinity Purified

Target Details

Target:	CFHR5
Alternative Name:	CFHR5 (CFHR5 Products)
Background:	Background: Involved in complement regulation. The dimerized forms have avidity for tissue-bound complement fragments and efficiently compete with the physiological complement

Target Details

inhibitor CFH.

Aliases: CFHL5 antibody, CFHR5 antibody, CFHR5D antibody, Complement factor H-related 5 antibody, Complement factor H-related protein 5 antibody, factor H-related gene 5 antibody, factor H-related protein 5 antibody, FHR-5 antibody, FHR5 antibody, FHR5_HUMAN antibody, FLJ10549 antibody, MGC133240 antibody, OTTHUMP00000034672 antibody

UniProt: [Q9BXR6](#)

Application Details

Application Notes: Recommended dilution: WB:1:500-1:2000, IHC:1:20-1:200,

Restrictions: For Research Use only

Handling

Format: Liquid

Buffer: Preservative: 0.03 % Proclin 300
Constituents: 50 % Glycerol, 0.01M PBS, pH 7.4

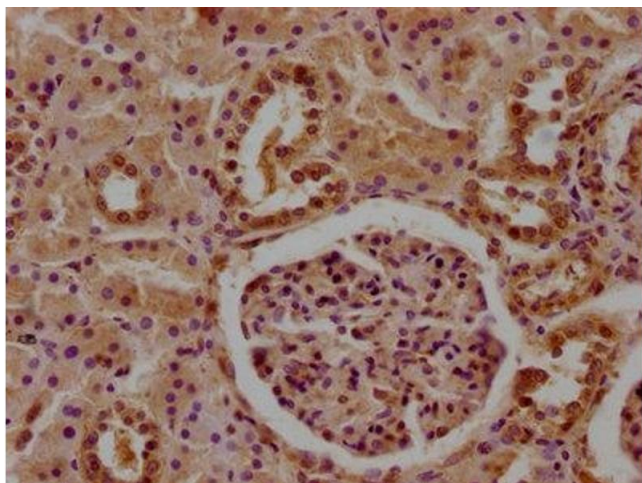
Preservative: ProClin

Precaution of Use: This product contains ProClin: a POISONOUS AND HAZARDOUS SUBSTANCE which should be handled by trained staff only.

Storage: -20 °C,-80 °C

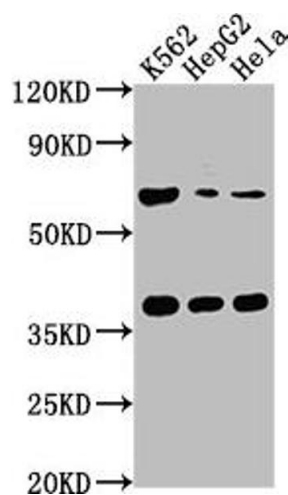
Storage Comment: Upon receipt, store at -20°C or -80°C. Avoid repeated freeze.

Images



Immunohistochemistry

Image 1. IHC image of ABIN7148399 diluted at 1:100 and staining in paraffin-embedded human kidney tissue performed on a Leica Bond™ system. After dewaxing and hydration, antigen retrieval was mediated by high pressure in a citrate buffer (pH 6.0). Section was blocked with 10 % normal goat serum 30 min at RT. Then primary antibody (1 % BSA) was incubated at 4 °C overnight. The primary is detected by a biotinylated secondary antibody and



visualized using an HRP conjugated SP system.

Western Blotting

Image 2. Western Blot Positive WB detected in: K562 whole cell lysate, HepG2 whole cell lysate, HeLa whole cell lysate All lanes: CFHR5 antibody at 1:1000 Secondary Goat polyclonal to rabbit IgG at 1/50000 dilution Predicted band size: 65 kDa Observed band size: 65 kDa