



[Go to Product page](#)

Datasheet for ABIN7148403

anti-Complement Factor I antibody (AA 239-316)

2 Images

Overview

Quantity:	100 µg
Target:	Complement Factor I (CFI)
Binding Specificity:	AA 239-316
Reactivity:	Human
Host:	Rabbit
Clonality:	Polyclonal
Conjugate:	This Complement Factor I antibody is un-conjugated
Application:	Western Blotting (WB), ELISA, Immunohistochemistry (IHC)

Product Details

Immunogen:	Recombinant Human Complement factor I protein (239-316AA)
Isotype:	IgG
Cross-Reactivity:	Human
Purification:	>95%, Protein G purified

Target Details

Target:	Complement Factor I (CFI)
Alternative Name:	CFI (CFI Products)
Background:	Background: Responsible for cleaving the alpha-chains of C4b and C3b in the presence of the cofactors C4-binding protein and factor H respectively.

Target Details

Aliases: AHUS3 antibody, ARMD13 antibody, C3b INA antibody, C3b inactivator antibody, C3B/C4B inactivator antibody, C3BINA antibody, CFAL_HUMAN antibody, Cfi antibody, Complement component I antibody, Complement control protein factor I antibody, Complement factor I antibody, Complement factor I heavy chain antibody, Complement factor I light chain antibody, F1 antibody, factor I antibody, FactorI antibody, FI antibody, I factor antibody, IF antibody, KAF antibody, Konglutinogen activating factor antibody, Light chain of factor I antibody, OTTHUMP00000219728 antibody, OTTHUMP00000221928 antibody

UniProt: [P05156](#)

Pathways: [Complement System](#)

Application Details

Application Notes: Recommended dilution: WB:1:500-1:5000, IHC:1:20-1:200,

Restrictions: For Research Use only

Handling

Format: Liquid

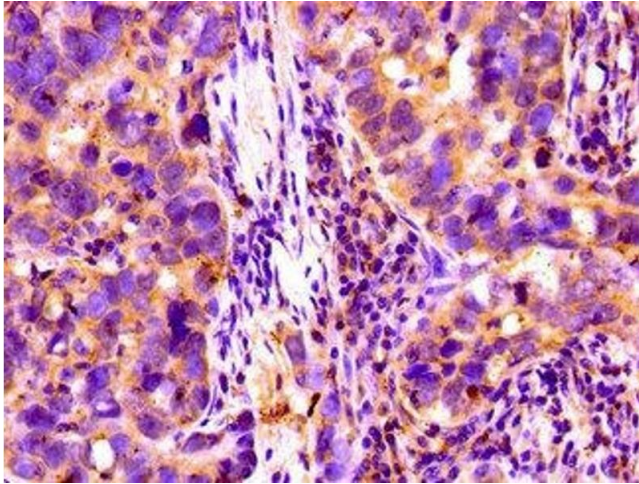
Buffer: Preservative: 0.03 % Proclin 300
Constituents: 50 % Glycerol, 0.01M PBS, pH 7.4

Preservative: ProClin

Precaution of Use: This product contains ProClin: a POISONOUS AND HAZARDOUS SUBSTANCE which should be handled by trained staff only.

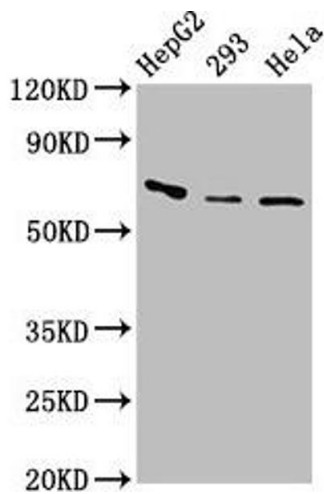
Storage: -20 °C,-80 °C

Storage Comment: Upon receipt, store at -20°C or -80°C. Avoid repeated freeze.



Immunohistochemistry

Image 1. Immunohistochemistry of paraffin-embedded human pancreatic cancer using ABIN7148403 at dilution of 1:100



Western Blotting

Image 2. Western Blot Positive WB detected in: HepG2 whole cell lysate, 293 whole cell lysate, HeLa whole cell lysate All lanes: CFI antibody at 3.2 $\mu\text{g}/\text{mL}$ Secondary Goat polyclonal to rabbit IgG at 1/50000 dilution Predicted band size: 66 kDa Observed band size: 66 kDa