

Datasheet for ABIN7148413
anti-CD21 antibody (AA 761-964)



[Go to Product page](#)

2 Images

Overview

Quantity:	100 µg
Target:	CD21 (CR2)
Binding Specificity:	AA 761-964
Reactivity:	Human
Host:	Rabbit
Clonality:	Polyclonal
Conjugate:	This CD21 antibody is un-conjugated
Application:	Immunohistochemistry (IHC), ELISA, Immunofluorescence (IF)

Product Details

Immunogen:	Recombinant Human Complement receptor type 2 protein (761-964AA)
Isotype:	IgG
Cross-Reactivity:	Human
Purification:	>95%, Protein G purified

Target Details

Target:	CD21 (CR2)
Alternative Name:	CR2 (CR2 Products)
Background:	Background: Receptor for complement C3Dd, for the Epstein-Barr virus on human B-cells and T-cells and for HNRPU. Participates in B lymphocytes activation.

Target Details

Aliases: C3DR antibody, CD 21 antibody, CD21 antibody, Complement C3d receptor 2 antibody, Complement C3d receptor antibody, Complement component (3d/Epstein Barr virus) receptor 2 antibody, Complement receptor type 2 antibody, CR antibody, Cr2 antibody, CR2_HUMAN antibody, CVID7 antibody, EBV receptor antibody, EBV-R antibody, Epstein Barr virus receptor antibody, Epstein-Barr virus receptor antibody, EVBR antibody, SLEB9 antibody

UniProt: [P20023](#)

Pathways: [Complement System](#)

Application Details

Application Notes: Recommended dilution: IHC:1:200-1:500, IF:1:50-1:200,

Restrictions: For Research Use only

Handling

Format: Liquid

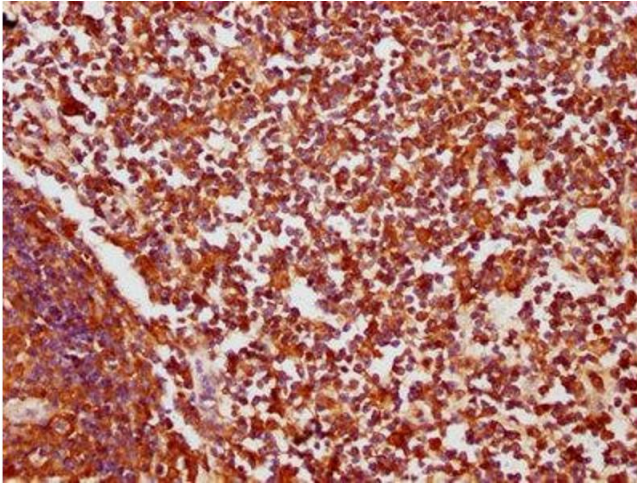
Buffer: Preservative: 0.03 % Proclin 300
Constituents: 50 % Glycerol, 0.01M PBS, pH 7.4

Preservative: ProClin

Precaution of Use: This product contains ProClin: a POISONOUS AND HAZARDOUS SUBSTANCE which should be handled by trained staff only.

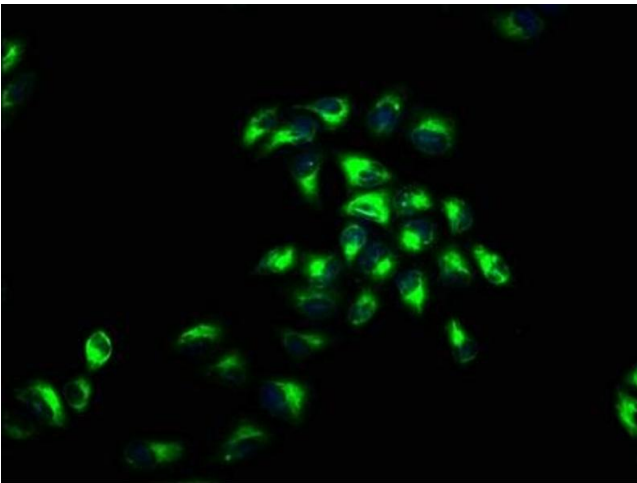
Storage: -20 °C,-80 °C

Storage Comment: Upon receipt, store at -20°C or -80°C. Avoid repeated freeze.



Immunohistochemistry

Image 1. IHC image of ABIN7148413 diluted at 1:200 and staining in paraffin-embedded human lymph node tissue performed on a Leica Bond™ system. After dewaxing and hydration, antigen retrieval was mediated by high pressure in a citrate buffer (pH 6.0). Section was blocked with 10% normal goat serum 30min at RT. Then primary antibody (1% BSA) was incubated at 4°C overnight. The primary is detected by a biotinylated secondary antibody and visualized using an HRP conjugated SP system.



Immunofluorescence

Image 2. Immunofluorescence staining of HeLa cells with ABIN7148413 at 1:66, counter-stained with DAPI. The cells were fixed in 4% formaldehyde, permeabilized using 0.2% Triton X-100 and blocked in 10% normal Goat Serum. The cells were then incubated with the antibody overnight at 4°C. The secondary antibody was Alexa Fluor 488-conjugated AffiniPure Goat Anti-Rabbit IgG(H+L).