

Datasheet for ABIN7148495  
**anti-COPS3 antibody (AA 194-423)**[Go to Product page](#)

## 4 Images

## Overview

Quantity:	100 µL
Target:	COPS3
Binding Specificity:	AA 194-423
Reactivity:	Human
Host:	Rabbit
Clonality:	Polyclonal
Conjugate:	This COPS3 antibody is un-conjugated
Application:	Western Blotting (WB), Immunohistochemistry (IHC), ELISA, Immunoprecipitation (IP)

## Product Details

Immunogen:	Recombinant Human COP9 signalosome complex subunit 3 protein (194-423AA)
Isotype:	IgG
Cross-Reactivity:	Human, Mouse
Purification:	Antigen Affinity Purified

## Target Details

Target:	COPS3
Alternative Name:	COPS3 ( <a href="#">COPS3 Products</a> )
Background:	Background: Component of the COP9 signalosome complex (CSN), a complex involved in various cellular and developmental processes. The CSN complex is an essential regulator of the

## Target Details

ubiquitin (Ubl) conjugation pathway by mediating the deneddylation of the cullin subunits of SCF-type E3 ligase complexes, leading to decrease the Ubl ligase activity of SCF-type complexes such as SCF, CSA or DDB2. The complex is also involved in phosphorylation of p53/TP53, c-jun/JUN, IkappaBalpha/NFKBIA, ITPK1 and IRF8/ICSBP, possibly via its association with CK2 and PKD kinases. CSN-dependent phosphorylation of TP53 and JUN promotes and protects degradation by the Ubl system, respectively.

Aliases: Constitutive photomorphogenic homolog subunit 3 antibody, COP 9 (constitutive photomorphogenic) subunit 3 antibody, COP 9 complex homolog subunit 3 antibody, COP 9 complex S3 antibody, COP 9 complex subunit 3 antibody, COP 9 constitutive photomorphogenic homolog subunit 3 antibody, COP 9 homolog antibody, COP 9 signalosome complex subunit 3 antibody, COP 9 signalosome subunit 3 antibody, COP 9 subunit 3 antibody, COP9 (constitutive photomorphogenic) subunit 3 antibody, COP9 complex homolog subunit 3 antibody, COP9 complex S3 antibody, COP9 complex subunit 3 antibody, COP9 constitutive photomorphogenic homolog subunit 3 antibody, COP9 homolog antibody, COP9 signalosome complex subunit 3 antibody, COP9 signalosome subunit 3 antibody, COP9 subunit 3 antibody, COPS 3 antibody, cops3 antibody, CSN 3 antibody, CSN3 antibody, CSN3\_HUMAN antibody, JAB 1 containing signalosome subunit 3 antibody, JAB1 containing signalosome subunit 3 antibody, JAB1-containing signalosome subunit 3 antibody, SGN 3 antibody, SGN3 antibody, Signalosome subunit 3 antibody

UniProt: [Q9UNS2](#)

Pathways: [Cell Division Cycle](#)

## Application Details

Application Notes: Recommended dilution: WB:1:1000-1:5000, IHC:1:20-1:200, IP:1:200-1:2000,

Restrictions: For Research Use only

## Handling

Format: Liquid

Buffer: PBS with 0.02 % sodium azide, 50 % glycerol, pH 7.3.

Preservative: Sodium azide

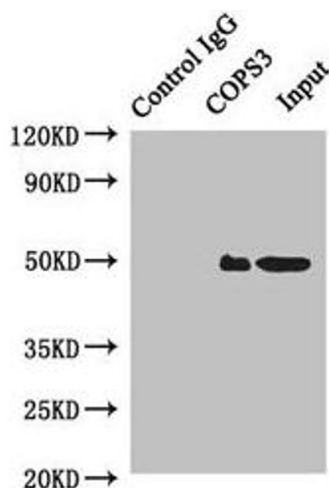
Precaution of Use: This product contains Sodium azide: a POISONOUS AND HAZARDOUS SUBSTANCE which should be handled by trained staff only.

## Handling

Storage: -20 °C, -80 °C

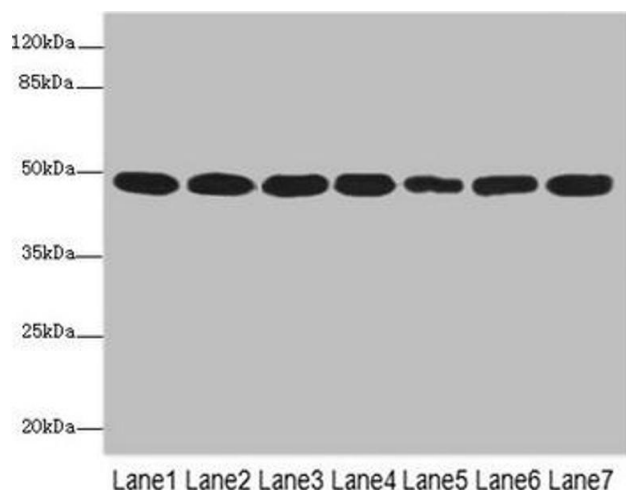
Storage Comment: Upon receipt, store at -20°C or -80°C. Avoid repeated freeze.

## Images



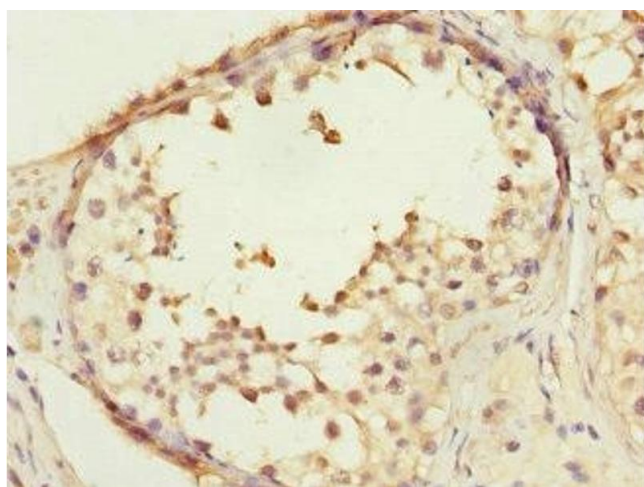
### Western Blotting

**Image 1.** Immunoprecipitating COPS3 in HeLa whole cell lysate Lane 1: Rabbit control IgG instead of (1 µg) instead of ABIN7148495 in HeLa whole cell lysate. For western blotting, a HRP-conjugated anti-rabbit IgG, specific to the non-reduced form of IgG was used as the Secondary antibody (1/50000) Lane 2: ABIN7148495 (4 µg) + HeLa whole cell lysate (500 µg) Lane 3: HeLa whole cell lysate (20 µg)



### Western Blotting

**Image 2.** Western blot All lanes: COPS3 antibody at 3.41 µg/mL Lane 1: MCF-7 whole cell lysate Lane 2: HeLa whole cell lysate Lane 3: 293T whole cell lysate Lane 4: HT29 whole cell lysate Lane 5: Mouse heart tissue Lane 6: Mouse brain tissue Lane 7: Mouse ovarian tissue Secondary Goat polyclonal to rabbit IgG at 1/10000 dilution Predicted band size: 48, 46 kDa Observed band size: 48 kDa



### Immunohistochemistry

**Image 3.** Immunohistochemistry of paraffin-embedded human testis tissue using ABIN7148495 at dilution of 1:100

Please check the [product details page](#) for more images. Overall 4 images are available for ABIN7148495.