

Datasheet for ABIN7148497  
**anti-COPS7A antibody (AA 1-275)**[Go to Product page](#)

## 3 Images

## Overview

|                      |  |
|----------------------|--|
| Quantity:            | 100 µL   |
| Target:              | COPS7A   |
| Binding Specificity: | AA 1-275   |
| Reactivity:          | Human  |
| Host:                | Rabbit   |
| Clonality:           | Polyclonal   |
| Conjugate:           | This COPS7A antibody is un-conjugated                    |
| Application:         | Western Blotting (WB), ELISA, Immunohistochemistry (IHC) |

## Product Details

|                   |   |
|-------------------|---|
| Immunogen:        | Recombinant Human COP9 signalosome complex subunit 7a protein (1-275AA) |
| Isotype:          | IgG   |
| Cross-Reactivity: | Human, Rat  |
| Purification:     | Antigen Affinity Purified   |

## Target Details

|                   |   |
|-------------------|---|
| Target:           | COPS7A  |
| Alternative Name: | COPS7A ( <a href="#">COPS7A Products</a> )  |
| Background:       | Background: Component of the COP9 signalosome complex (CSN), a complex involved in various cellular and developmental processes. The CSN complex is an essential regulator of the |

## Target Details

ubiquitin (Ubl) conjugation pathway by mediating the deneddylation of the cullin subunits of SCF-type E3 ligase complexes, leading to decrease the Ubl ligase activity of SCF-type complexes such as SCF, CSA or DDB2. The complex is also involved in phosphorylation of p53/TP53, JUN, I-kappa-B-alpha/NFKBIA, ITPK1 and IRF8/ICSBP, possibly via its association with CK2 and PKD kinases. CSN-dependent phosphorylation of TP53 and JUN promotes and protects degradation by the Ubl system, respectively.

Aliases: COP9 complex subunit 7a antibody, COP9 constitutive photomorphogenic homolog subunit 7A antibody, COP9 signalosome complex subunit 7a antibody, COP9 signalosome subunit 7A antibody, COPS7A antibody, CSN7A antibody, CSN7A\_HUMAN antibody, Dermal papilla derived protein 10 antibody, Dermal papilla-derived protein 10 antibody, DERP10 antibody, JAB1 containing signalosome subunit 7a antibody, JAB1-containing signalosome subunit 7a antibody, SGN7a antibody, Signalosome subunit 7a antibody

UniProt: [Q9UBW8](#)

Pathways: [Cell Division Cycle](#)

## Application Details

Application Notes: Recommended dilution: WB:1:500-1:2000, IHC:1:20-1:200,

Restrictions: For Research Use only

## Handling

Format: Liquid

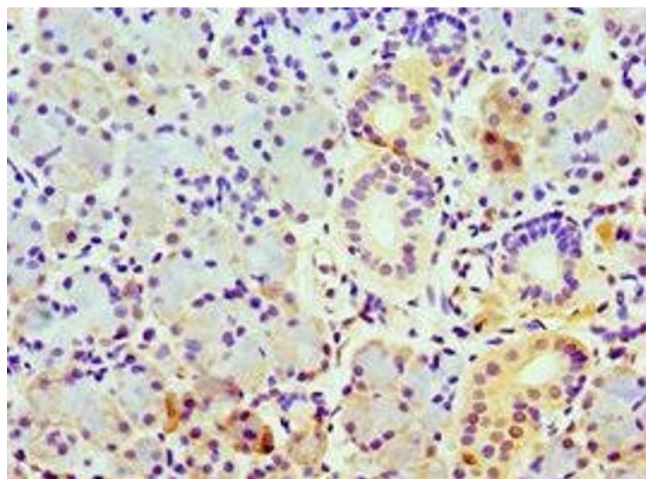
Buffer: PBS with 0.02 % sodium azide, 50 % glycerol, pH 7.3.

Preservative: Sodium azide

Precaution of Use: This product contains Sodium azide: a POISONOUS AND HAZARDOUS SUBSTANCE which should be handled by trained staff only.

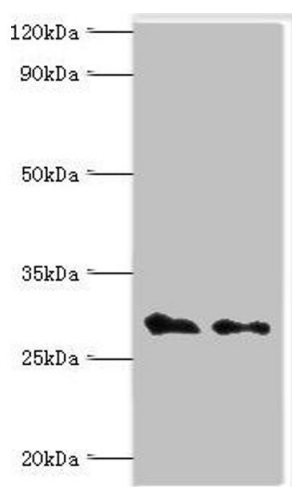
Storage: -20 °C, -80 °C

Storage Comment: Upon receipt, store at -20°C or -80°C. Avoid repeated freeze.



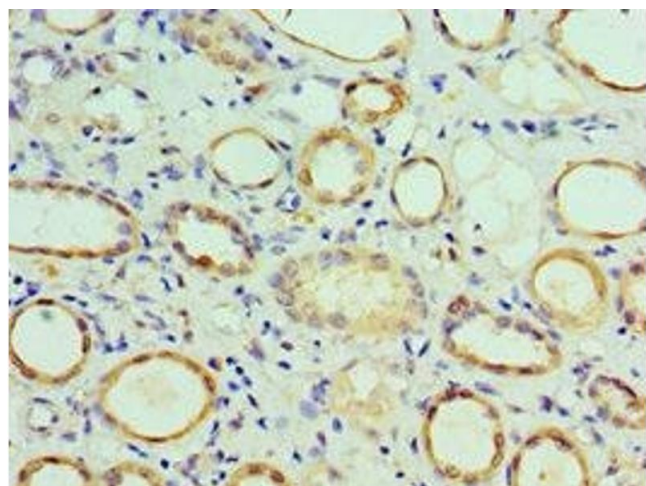
#### Immunohistochemistry

**Image 1.** Immunohistochemistry of paraffin-embedded human pancreatic tissue using ABIN7148497 at dilution of 1:100



#### Western Blotting

**Image 2.** Western blot All lanes: COP9 signalosome complex subunit 7a antibody at 4 µg/mL Lane 1: Rat heart tissue Lane 2: Rat brain tissue Secondary Goat polyclonal to rabbit IgG at 1/10000 dilution Predicted band size: 30 kDa Observed band size: 30 kDa



#### Immunohistochemistry

**Image 3.** Immunohistochemistry of paraffin-embedded human kidney tissue using ABIN7148497 at dilution of 1:100