

Datasheet for ABIN7148498
anti-COPS7A antibody (AA 1-275)



[Go to Product page](#)

3 Images

Overview

Quantity:	100 µL
Target:	COPS7A
Binding Specificity:	AA 1-275
Reactivity:	Human
Host:	Rabbit
Clonality:	Polyclonal
Conjugate:	This COPS7A antibody is un-conjugated
Application:	ELISA, Immunohistochemistry (IHC), Immunofluorescence (IF)

Product Details

Immunogen:	Recombinant Human COP9 signalosome complex subunit 7a protein (1-275AA)
Isotype:	IgG
Cross-Reactivity:	Human
Purification:	Antigen Affinity Purified

Target Details

Target:	COPS7A
Alternative Name:	COPS7A (COPS7A Products)
Background:	Background: Component of the COP9 signalosome complex (CSN), a complex involved in various cellular and developmental processes. The CSN complex is an essential regulator of the

Target Details

ubiquitin (Ubl) conjugation pathway by mediating the deneddylation of the cullin subunits of SCF-type E3 ligase complexes, leading to decrease the Ubl ligase activity of SCF-type complexes such as SCF, CSA or DDB2. The complex is also involved in phosphorylation of p53/TP53, JUN, I-kappa-B-alpha/NFKBIA, ITPK1 and IRF8/ICSBP, possibly via its association with CK2 and PKD kinases. CSN-dependent phosphorylation of TP53 and JUN promotes and protects degradation by the Ubl system, respectively.

Aliases: COP9 complex subunit 7a antibody, COP9 constitutive photomorphogenic homolog subunit 7A antibody, COP9 signalosome complex subunit 7a antibody, COP9 signalosome subunit 7A antibody, COPS7A antibody, CSN7A antibody, CSN7A_HUMAN antibody, Dermal papilla derived protein 10 antibody, Dermal papilla-derived protein 10 antibody, DERP10 antibody, JAB1 containing signalosome subunit 7a antibody, JAB1-containing signalosome subunit 7a antibody, SGN7a antibody, Signalosome subunit 7a antibody

UniProt: [Q9UBW8](#)

Pathways: [Cell Division Cycle](#)

Application Details

Application Notes: Recommended dilution: IHC:1:20-1:200, IF:1:50-1:200,

Restrictions: For Research Use only

Handling

Format: Liquid

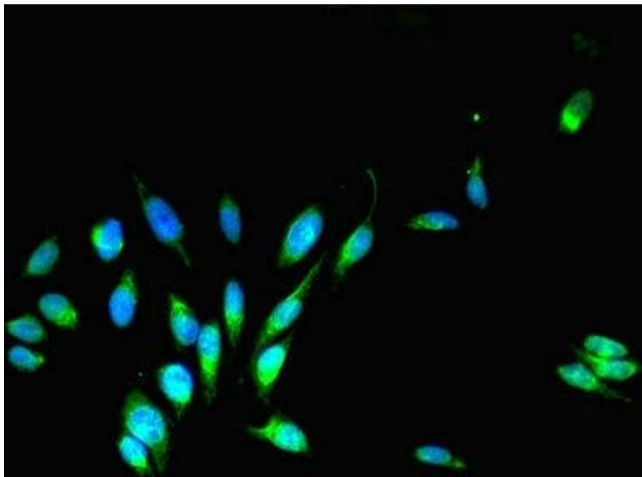
Buffer: PBS with 0.02 % sodium azide, 50 % glycerol, pH 7.3.

Preservative: Sodium azide

Precaution of Use: This product contains Sodium azide: a POISONOUS AND HAZARDOUS SUBSTANCE which should be handled by trained staff only.

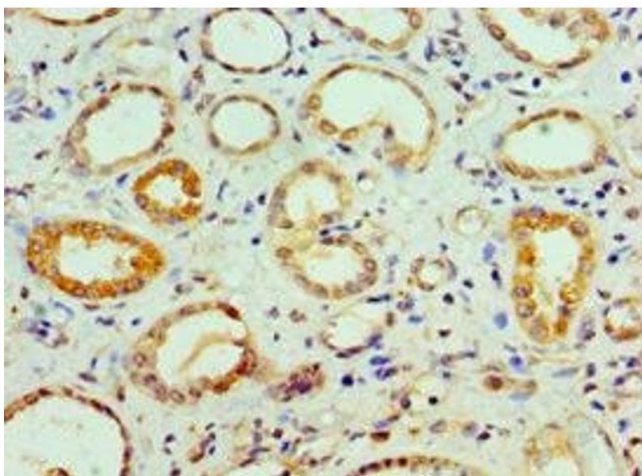
Storage: -20 °C,-80 °C

Storage Comment: Upon receipt, store at -20°C or -80°C. Avoid repeated freeze.



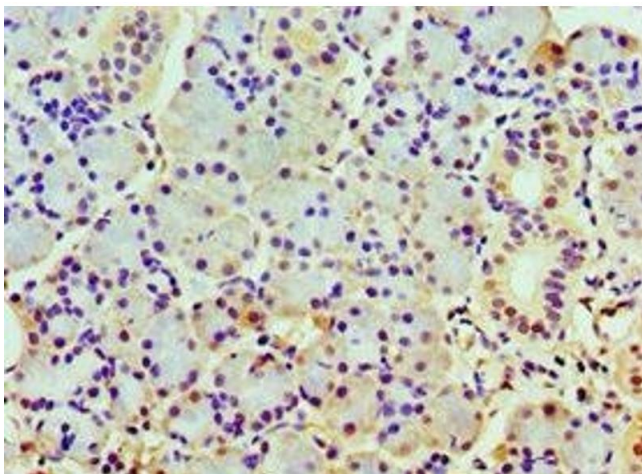
Immunofluorescence

Image 1. Immunofluorescent analysis of HeLa cells using ABIN7148498 at dilution of 1:100 and Alexa Fluor 488-conjugated AffiniPure Goat Anti-Rabbit IgG(H+L)



Immunohistochemistry

Image 2. Immunohistochemistry of paraffin-embedded human kidney tissue using ABIN7148498 at dilution of 1:100



Immunohistochemistry

Image 3. Immunohistochemistry of paraffin-embedded human pancreatic tissue using ABIN7148498 at dilution of 1:100