

Datasheet for ABIN7148519  
**anti-Copine III antibody (AA 297-442)**

## 4 Images

[Go to Product page](#)

## Overview

Quantity:	100 µg
Target:	Copine III (CPNE3)
Binding Specificity:	AA 297-442
Reactivity:	Human
Host:	Rabbit
Clonality:	Polyclonal
Conjugate:	This Copine III antibody is un-conjugated
Application:	Western Blotting (WB), ELISA, Immunohistochemistry (IHC), Immunofluorescence (IF)

## Product Details

Immunogen:	Recombinant Human Copine-3 protein (297-442AA)
Isotype:	IgG
Cross-Reactivity:	Human
Purification:	>95%, Protein G purified

## Target Details

Target:	Copine III (CPNE3)
Alternative Name:	CPNE3 ( <a href="#">CPNE3 Products</a> )
Background:	Background: Calcium-dependent phospholipid-binding protein that plays a role in ERBB2-mediated tumor cell migration in response to growth factor heregulin stimulation

## Target Details

(PubMed:20010870).

Aliases: Copine 3 antibody, Copine III antibody, Copine-3 antibody, Copine3 antibody, CopineIII antibody, CPN3 antibody, CPNE 3 antibody, CPNE3 antibody, CPNE3\_HUMAN antibody, KIAA0636 antibody, PRO1071 antibody

UniProt: [O75131](#)

## Application Details

Application Notes: Recommended dilution: WB:1:500-1:5000, IHC:1:200-1:500, IF:1:50-1:200,

Restrictions: For Research Use only

## Handling

Format: Liquid

Buffer: Preservative: 0.03 % Proclin 300  
Constituents: 50 % Glycerol, 0.01M PBS, pH 7.4

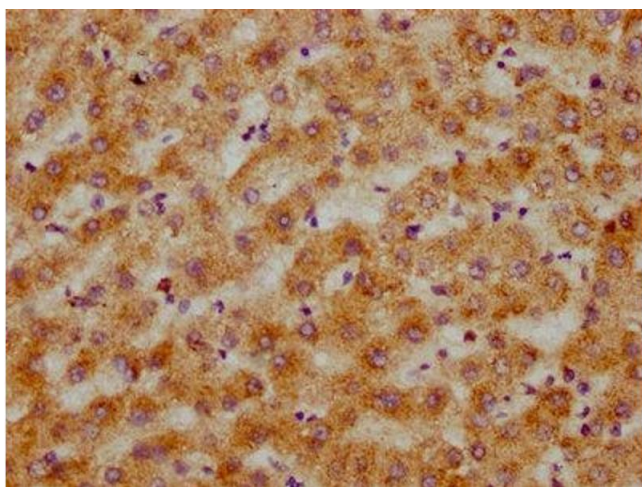
Preservative: ProClin

Precaution of Use: This product contains ProClin: a POISONOUS AND HAZARDOUS SUBSTANCE which should be handled by trained staff only.

Storage: -20 °C,-80 °C

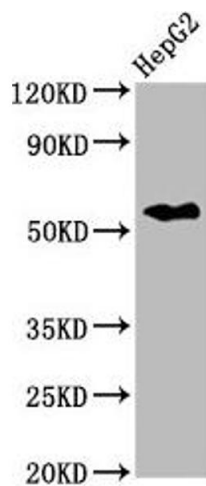
Storage Comment: Upon receipt, store at -20°C or -80°C. Avoid repeated freeze.

## Images



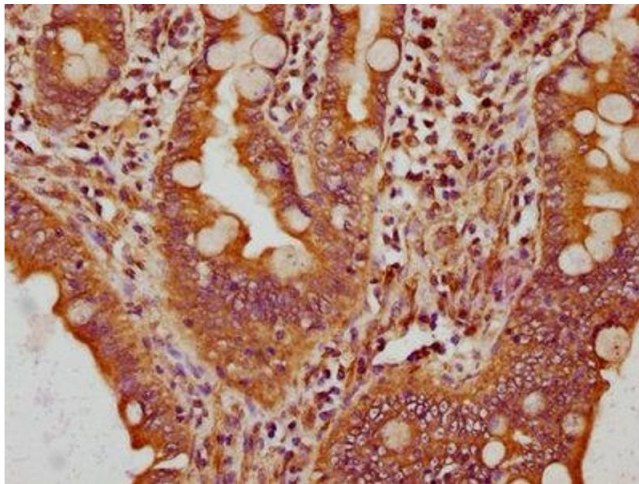
### Immunohistochemistry

**Image 1.** IHC image of ABIN7148519 diluted at 1:200 and staining in paraffin-embedded human liver tissue performed on a Leica Bond™ system. After dewaxing and hydration, antigen retrieval was mediated by high pressure in a citrate buffer (pH 6.0). Section was blocked with 10% normal goat serum 30min at RT. Then primary antibody (1% BSA) was incubated at 4°C overnight. The primary is detected by a biotinylated secondary antibody and visualized using an HRP conjugated SP system.



#### Western Blotting

**Image 2.** Western Blot Positive WB detected in: HepG2 whole cell lysate All lanes: CPNE3 antibody at 2.6 µg/mL Secondary Goat polyclonal to rabbit IgG at 1/50000 dilution Predicted band size: 61 kDa Observed band size: 61 kDa



#### Immunohistochemistry

**Image 3.** IHC image of ABIN7148519 diluted at 1:200 and staining in paraffin-embedded human small intestine tissue performed on a Leica Bond™ system. After dewaxing and hydration, antigen retrieval was mediated by high pressure in a citrate buffer (pH 6.0). Section was blocked with 10% normal goat serum 30min at RT. Then primary antibody (1% BSA) was incubated at 4°C overnight. The primary is detected by a biotinylated secondary antibody and visualized using an HRP conjugated SP system.

Please check the [product details page](#) for more images. Overall 4 images are available for ABIN7148519.