

Datasheet for ABIN7148527
anti-CPNE7 antibody (AA 254-393)

3 Images

[Go to Product page](#)

Overview

Quantity:	100 µg
Target:	CPNE7
Binding Specificity:	AA 254-393
Reactivity:	Human
Host:	Rabbit
Clonality:	Polyclonal
Conjugate:	This CPNE7 antibody is un-conjugated
Application:	Western Blotting (WB), ELISA, Immunofluorescence (IF), Immunohistochemistry (IHC)

Product Details

Immunogen:	Recombinant Human Copine-7 protein (254-393AA)
Isotype:	IgG
Cross-Reactivity:	Human, Mouse, Rat
Purification:	>95%, Protein G purified

Target Details

Target:	CPNE7
Alternative Name:	CPNE7 (CPNE7 Products)
Background:	Background: Calcium-dependent phospholipid-binding protein that may play a role in calcium-mediated intracellular processes.

Target Details

Aliases: CPNE7Copine-7 antibody, Copine VII antibody

UniProt: [Q9UBL6](#)

Application Details

Application Notes: Recommended dilution: WB:1:500-1:5000, IHC:1:200-1:500, IF:1:50-1:200,

Restrictions: For Research Use only

Handling

Format: Liquid

Buffer: Preservative: 0.03 % Proclin 300
Constituents: 50 % Glycerol, 0.01M PBS, pH 7.4

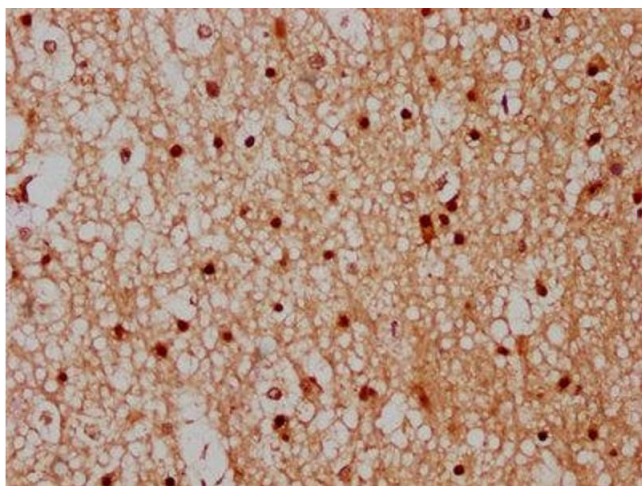
Preservative: ProClin

Precaution of Use: This product contains ProClin: a POISONOUS AND HAZARDOUS SUBSTANCE which should be handled by trained staff only.

Storage: -20 °C,-80 °C

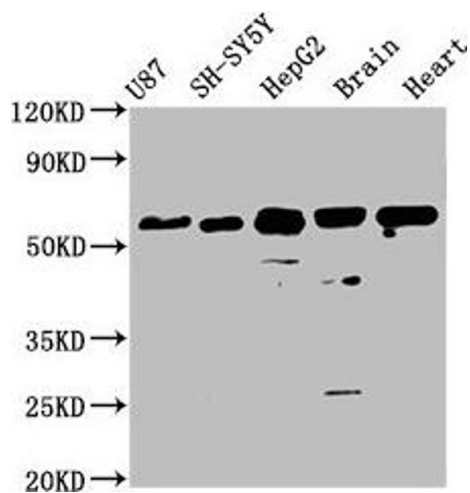
Storage Comment: Upon receipt, store at -20°C or -80°C. Avoid repeated freeze.

Images



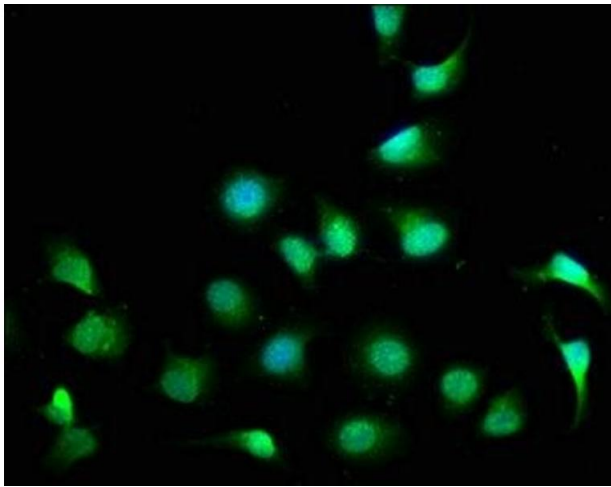
Immunohistochemistry

Image 1. IHC image of ABIN7148527 diluted at 1:300 and staining in paraffin-embedded human brain tissue performed on a Leica Bond™ system. After dewaxing and hydration, antigen retrieval was mediated by high pressure in a citrate buffer (pH 6.0). Section was blocked with 10% normal goat serum 30min at RT. Then primary antibody (1% BSA) was incubated at 4°C overnight. The primary is detected by a biotinylated secondary antibody and visualized using an HRP conjugated SP system.



Western Blotting

Image 2. Western Blot Positive WB detected in: U87 whole cell lysate, SH-SY5Y whole cell lysate, HepG2 whole cell lysate, Mouse brain tissue, Rat heart tissue All lanes: CPNE7 antibody at 3.6 µg/mL Secondary Goat polyclonal to rabbit IgG at 1/50000 dilution Predicted band size: 71, 62 kDa Observed band size: 62 kDa



Immunofluorescence

Image 3. Immunofluorescence staining of A549 cells with ABIN7148527 at 1:100, counter-stained with DAPI. The cells were fixed in 4% formaldehyde, permeabilized using 0.2% Triton X-100 and blocked in 10% normal Goat Serum. The cells were then incubated with the antibody overnight at 4°C. The secondary antibody was Alexa Fluor 488-conjugated AffiniPure Goat Anti-Rabbit IgG(H+L).