

Datasheet for ABIN7148531
anti-CPNE8 antibody (AA 349-498)[Go to Product page](#)

2 Images

Overview

Quantity:	100 µg
Target:	CPNE8
Binding Specificity:	AA 349-498
Reactivity:	Human
Host:	Rabbit
Clonality:	Polyclonal
Conjugate:	This CPNE8 antibody is un-conjugated
Application:	ELISA, Immunohistochemistry (IHC)

Product Details

Immunogen:	Recombinant Human Copine-8 protein (349-498AA)
Isotype:	IgG
Cross-Reactivity:	Human
Purification:	>95%, Protein G purified

Target Details

Target:	CPNE8
Alternative Name:	CPNE8 (CPNE8 Products)
Background:	Background: Probable calcium-dependent phospholipid-binding protein that may play a role in calcium-mediated intracellular processes.

Target Details

Aliases: Copine 8 antibody, Copine VIII antibody, Copine-8 antibody, CPNE8 antibody, CPNE8_HUMAN antibody, MGC129645 antibody, MGC129646 antibody

UniProt: [Q86YQ8](#)

Application Details

Application Notes: Recommended dilution: IHC:1:500-1:1000,

Restrictions: For Research Use only

Handling

Format: Liquid

Buffer: Preservative: 0.03 % Proclin 300
Constituents: 50 % Glycerol, 0.01M PBS, pH 7.4

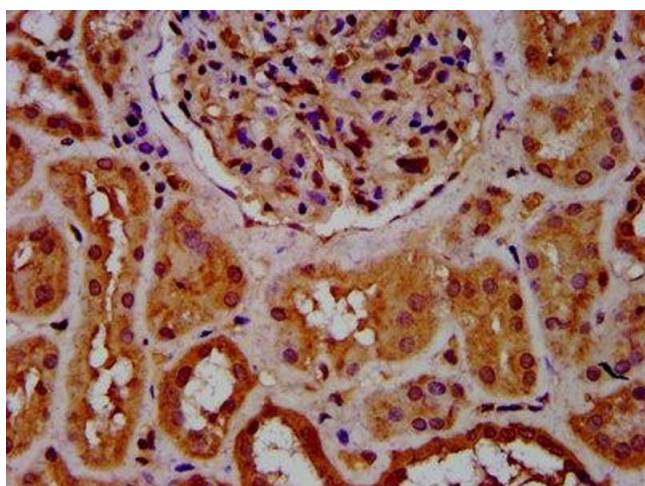
Preservative: ProClin

Precaution of Use: This product contains ProClin: a POISONOUS AND HAZARDOUS SUBSTANCE which should be handled by trained staff only.

Storage: -20 °C,-80 °C

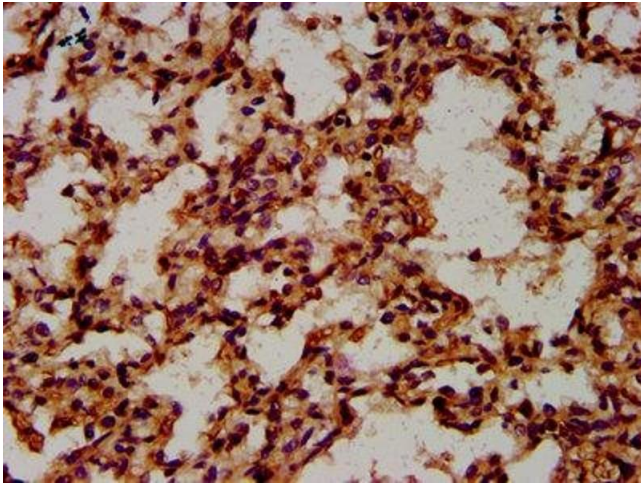
Storage Comment: Upon receipt, store at -20°C or -80°C. Avoid repeated freeze.

Images



Immunohistochemistry

Image 1. IHC image of ABIN7148531 diluted at 1:600 and staining in paraffin-embedded human kidney tissue performed on a Leica Bond™ system. After dewaxing and hydration, antigen retrieval was mediated by high pressure in a citrate buffer (pH 6.0). Section was blocked with 10% normal goat serum 30min at RT. Then primary antibody (1% BSA) was incubated at 4°C overnight. The primary is detected by a biotinylated secondary antibody and visualized using an HRP conjugated SP system.



Immunohistochemistry

Image 2. IHC image of ABIN7148531 diluted at 1:600 and staining in paraffin-embedded human lung tissue performed on a Leica BondTM system. After dewaxing and hydration, antigen retrieval was mediated by high pressure in a citrate buffer (pH 6.0). Section was blocked with 10% normal goat serum 30min at RT. Then primary antibody (1% BSA) was incubated at 4°C overnight. The primary is detected by a biotinylated secondary antibody and visualized using an HRP conjugated SP system.