

Datasheet for ABIN7148543
anti-CUTC antibody (AA 1-64)

3 Images

[Go to Product page](#)

Overview

Quantity:	100 µg
Target:	CUTC
Binding Specificity:	AA 1-64
Reactivity:	Human
Host:	Rabbit
Clonality:	Polyclonal
Conjugate:	This CUTC antibody is un-conjugated
Application:	ELISA, Immunohistochemistry (IHC), Immunofluorescence (IF)

Product Details

Immunogen:	Recombinant Human Copper homeostasis protein cutC homolog protein (1-64AA)
Isotype:	IgG
Cross-Reactivity:	Human
Purification:	>95%, Protein G purified

Target Details

Target:	CUTC
Alternative Name:	CUTC (CUTC Products)
Background:	Background: May play a role in copper homeostasis. Can bind one Cu(1+) per subunit. Aliases: CGI 32 antibody, CGI32 antibody, Copper homeostasis protein cutC homolog antibody,

Target Details

cutC antibody, CutC copper transporter homolog (E. coli) antibody, CUTC_HUMAN antibody, RP11-483F11.3 antibody

UniProt: [Q9NTM9](#)

Pathways: [Transition Metal Ion Homeostasis](#)

Application Details

Application Notes: Recommended dilution: IHC:1:200-1:500, IF:1:50-1:200,

Restrictions: For Research Use only

Handling

Format: Liquid

Buffer: Preservative: 0.03 % Proclin 300
Constituents: 50 % Glycerol, 0.01M PBS, pH 7.4

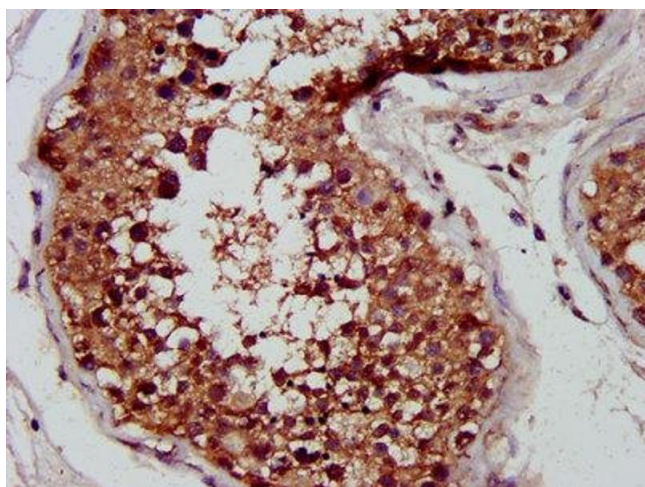
Preservative: ProClin

Precaution of Use: This product contains ProClin: a POISONOUS AND HAZARDOUS SUBSTANCE which should be handled by trained staff only.

Storage: -20 °C, -80 °C

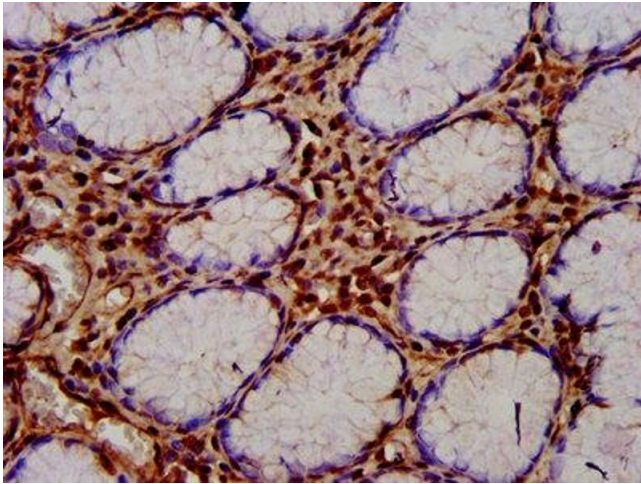
Storage Comment: Upon receipt, store at -20°C or -80°C. Avoid repeated freeze.

Images



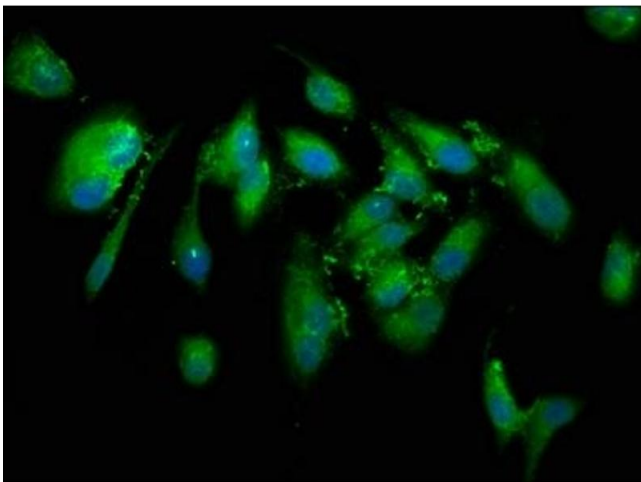
Immunohistochemistry

Image 1. IHC image of ABIN7148543 diluted at 1:400 and staining in paraffin-embedded human testis tissue performed on a Leica Bond™ system. After dewaxing and hydration, antigen retrieval was mediated by high pressure in a citrate buffer (pH 6.0). Section was blocked with 10% normal goat serum 30min at RT. Then primary antibody (1% BSA) was incubated at 4°C overnight. The primary is detected by a biotinylated secondary antibody and visualized using an HRP conjugated SP system.



Immunohistochemistry

Image 2. IHC image of ABIN7148543 diluted at 1:400 and staining in paraffin-embedded human gastric cancer performed on a Leica Bond™ system. After dewaxing and hydration, antigen retrieval was mediated by high pressure in a citrate buffer (pH 6.0). Section was blocked with 10% normal goat serum 30min at RT. Then primary antibody (1% BSA) was incubated at 4°C overnight. The primary is detected by a biotinylated secondary antibody and visualized using an HRP conjugated SP system.



Immunofluorescence

Image 3. Immunofluorescence staining of HeLa cells with ABIN7148543 at 1:133, counter-stained with DAPI. The cells were fixed in 4% formaldehyde, permeabilized using 0.2% Triton X-100 and blocked in 10% normal Goat Serum. The cells were then incubated with the antibody overnight at 4°C. The secondary antibody was Alexa Fluor 488-conjugated AffiniPure Goat Anti-Rabbit IgG(H+L).