

Datasheet for ABIN7148547  
**anti-ATOX1 antibody (AA 1-68)**[Go to Product page](#)

## 1 Image

## Overview

Quantity:	100 µg
Target:	ATOX1
Binding Specificity:	AA 1-68
Reactivity:	Human
Host:	Rabbit
Clonality:	Polyclonal
Conjugate:	This ATOX1 antibody is un-conjugated
Application:	ELISA, Immunohistochemistry (IHC)

## Product Details

Immunogen:	Recombinant Human Copper transport protein ATOX1 protein (1-68AA)
Isotype:	IgG
Cross-Reactivity:	Human
Purification:	>95%, Protein G purified

## Target Details

Target:	ATOX1
Alternative Name:	ATOX1 ( <a href="#">ATOX1 Products</a> )
Background:	Background: Binds and deliver cytosolic copper to the copper ATPase proteins. May be important in cellular antioxidant defense.

## Target Details

Aliases: ATOX1 antibody, ATOX1\_HUMAN antibody, ATX1 antibody, ATX1 antioxidant protein 1 homolog (yeast) antibody, ATX1 antioxidant protein 1 homolog antibody, Copper transport protein antibody, Copper transport protein ATOX1 antibody, HAH1 antibody, Metal transport protein antibody, Metal transport protein ATX1 antibody, MGC138453 antibody, MGC138455 antibody

UniProt: [O00244](#)

Pathways: [Transition Metal Ion Homeostasis](#)

## Application Details

Application Notes: Recommended dilution: IHC:1:200-1:500,

Restrictions: For Research Use only

## Handling

Format: Liquid

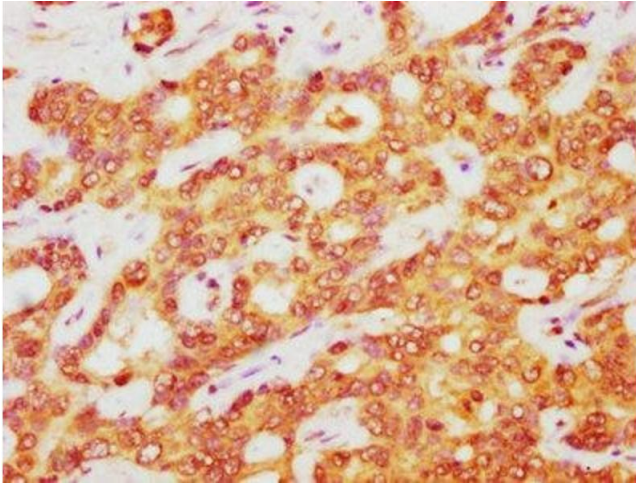
Buffer: Preservative: 0.03 % Proclin 300  
Constituents: 50 % Glycerol, 0.01M PBS, pH 7.4

Preservative: ProClin

Precaution of Use: This product contains ProClin: a POISONOUS AND HAZARDOUS SUBSTANCE which should be handled by trained staff only.

Storage: -20 °C,-80 °C

Storage Comment: Upon receipt, store at -20°C or -80°C. Avoid repeated freeze.



#### Immunohistochemistry

**Image 1.** IHC image of ABIN7148547 diluted at 1:400 and staining in paraffin-embedded human liver cancer performed on a Leica Bond™ system. After dewaxing and hydration, antigen retrieval was mediated by high pressure in a citrate buffer (pH 6.0). Section was blocked with 10 % normal goat serum 30 min at RT. Then primary antibody (1 % BSA) was incubated at 4 °C overnight. The primary is detected by a biotinylated secondary antibody and visualized using an HRP conjugated SP system.