



[Go to Product page](#)

Datasheet for ABIN7148571
anti-CIR1 antibody (AA 1-160)

3 Images

Overview

Quantity:	100 µL
Target:	CIR1
Binding Specificity:	AA 1-160
Reactivity:	Human
Host:	Rabbit
Clonality:	Polyclonal
Conjugate:	This CIR1 antibody is un-conjugated
Application:	Western Blotting (WB), ELISA, Immunohistochemistry (IHC)

Product Details

Immunogen:	Recombinant Human Corepressor interacting with RBPJ 1 protein (1-160AA)
Isotype:	IgG
Cross-Reactivity:	Human
Purification:	Antigen Affinity Purified

Target Details

Target:	CIR1
Abstract:	CIR1 Products
Background:	Background: May modulate splice site selection during alternative splicing of pre-mRNAs (By similarity). Regulates transcription and acts as corepressor for RBPJ. Recruits RBPJ to the

Target Details

Sin3-histone deacetylase complex (HDAC). Required for RBPJ-mediated repression of transcription.

Aliases: CIR1 antibody, CIRCorepressor interacting with RBPJ 1 antibody, CBF1-interacting corepressor antibody, Receptin antibody

UniProt: [Q86X95](#)

Application Details

Application Notes: Recommended dilution: WB:1:1000-1:5000, IHC:1:20-1:200,

Restrictions: For Research Use only

Handling

Format: Liquid

Buffer: PBS with 0.02 % sodium azide, 50 % glycerol, pH 7.3.

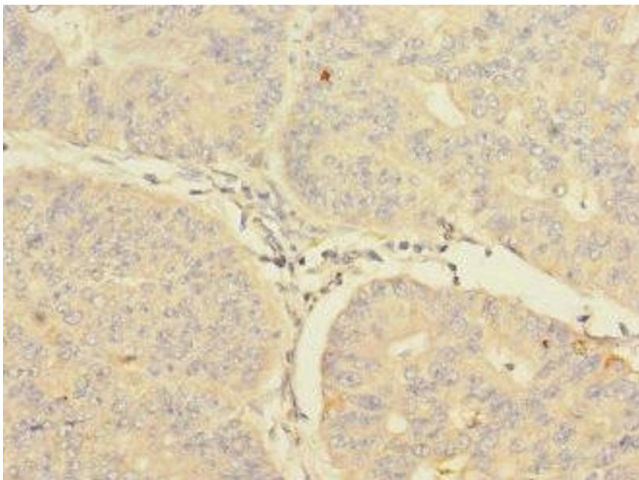
Preservative: Sodium azide

Precaution of Use: This product contains Sodium azide: a POISONOUS AND HAZARDOUS SUBSTANCE which should be handled by trained staff only.

Storage: -20 °C,-80 °C

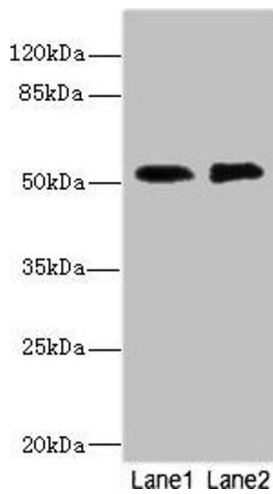
Storage Comment: Upon receipt, store at -20°C or -80°C. Avoid repeated freeze.

Images



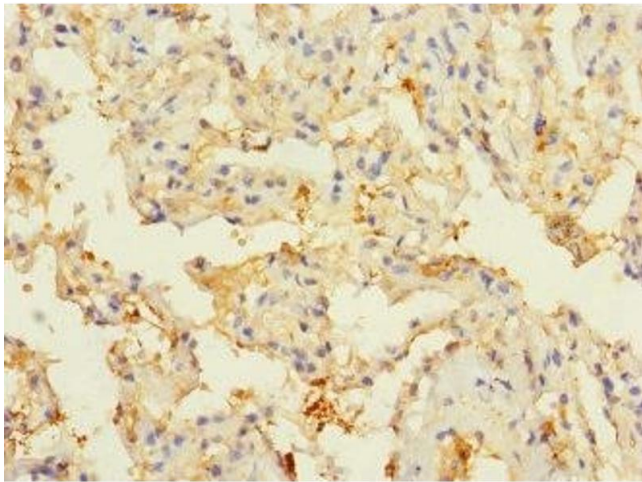
Immunohistochemistry

Image 1. Immunohistochemistry of paraffin-embedded human endometrial cancer using ABIN7148571 at dilution of 1:100



Western Blotting

Image 2. Western blot All lanes: TMOD1 antibody at 2.84 μ g/mL Lane 1: PC-3 whole cell lysate Lane 2: 293T whole cell lysate Secondary Goat polyclonal to rabbit IgG at 1/10000 dilution Predicted band size: 53, 24 kDa Observed band size: 53 kDa



Immunohistochemistry

Image 3. Immunohistochemistry of paraffin-embedded human lung tissue using ABIN7148571 at dilution of 1:100