



[Go to Product page](#)

Datasheet for ABIN7148662  
**anti-CKM antibody (AA 1-379)**

2 Images

Overview

Quantity:	100 µg
Target:	CKM
Binding Specificity:	AA 1-379
Reactivity:	Human
Host:	Rabbit
Clonality:	Polyclonal
Conjugate:	This CKM antibody is un-conjugated
Application:	Western Blotting (WB), ELISA, Immunohistochemistry (IHC)

Product Details

Immunogen:	Recombinant Human Creatine kinase M-type protein (1-379AA)
Isotype:	IgG
Cross-Reactivity:	Human, Mouse
Purification:	>95%, Protein G purified

Target Details

Target:	CKM
Alternative Name:	CKM ( <a href="#">CKM Products</a> )
Background:	Background: Reversibly catalyzes the transfer of phosphate between ATP and various phosphogens (e.g. creatine phosphate). Creatine kinase isoenzymes play a central role in

## Target Details

---

energy transduction in tissues with large, fluctuating energy demands, such as skeletal muscle, heart, brain and spermatozoa.

Aliases: CKM antibody, CKMM antibody, Creatine kinase M antibody, Creatine kinase M chain antibody, Creatine kinase M type antibody, Creatine kinase M-type antibody, Creatine kinase muscle antibody, Creatine kinase, muscle type antibody, KCRM\_HUMAN antibody, M-CK antibody, MCK antibody, Muscle creatine kinase antibody

---

UniProt: [P06732](#)

## Application Details

---

Application Notes: Recommended dilution: WB:1:1000-1:5000, IHC:1:20-1:200,

Restrictions: For Research Use only

## Handling

---

Format: Liquid

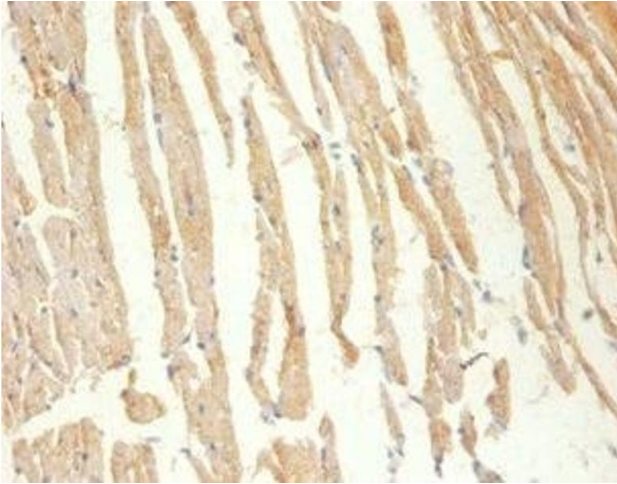
Buffer: Preservative: 0.03 % Proclin 300  
Constituents: 50 % Glycerol, 0.01M PBS, PH 7.4

Preservative: ProClin

Precaution of Use: This product contains ProClin: a POISONOUS AND HAZARDOUS SUBSTANCE which should be handled by trained staff only.

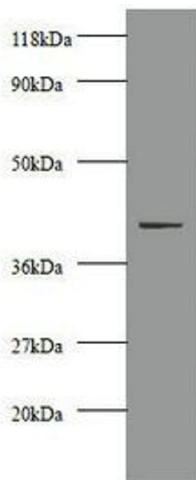
Storage: -20 °C,-80 °C

Storage Comment: Upon receipt, store at -20°C or -80°C. Avoid repeated freeze.



### Immunohistochemistry

**Image 1.** Immunohistochemistry of paraffin-embedded Mouse heart tissue using ABIN7148662 at dilution of 1:100



### Western Blotting

**Image 2.** Western blot All lanes: Creatine kinase M-type antibody at 2 µg/mL + 293T whole cell lysate Secondary Goat polyclonal to rabbit IgG at 1/10000 dilution Predicted band size: 44 kDa Observed band size: 44 kDa