

Datasheet for ABIN7148671
anti-CBP antibody (AA 2217-2442)



[Go to Product page](#)

2 Images

Overview

Quantity:	100 µg
Target:	CBP (CREBBP)
Binding Specificity:	AA 2217-2442
Reactivity:	Human
Host:	Rabbit
Clonality:	Polyclonal
Conjugate:	This CBP antibody is un-conjugated
Application:	Immunohistochemistry (IHC), ELISA, Immunofluorescence (IF)

Product Details

Immunogen:	Recombinant Human CREB-binding protein (2217-2442AA)
Isotype:	IgG
Cross-Reactivity:	Human
Purification:	>95%, Protein G purified

Target Details

Target:	CBP (CREBBP)
Alternative Name:	CREBBP (CREBBP Products)
Background:	Background: Acetylates histones, giving a specific tag for transcriptional activation. Also acetylates non-histone proteins, like NCOA3 and FOXO1. Binds specifically to phosphorylated

Target Details

CREB and enhances its transcriptional activity toward cAMP-responsive genes. Acts as a coactivator of ALX1. Acts as a circadian transcriptional coactivator which enhances the activity of the circadian transcriptional activators: NPAS2-ARNTL/BMAL1 and CLOCK-ARNTL/BMAL1 heterodimers. Acetylates PCNA, acetylation promotes removal of chromatin-bound PCNA and its degradation during nucleotide excision repair (NER) (PubMed:24939902).

Aliases: CBP antibody, CBP_HUMAN antibody, CREB binding protein antibody, CREB-binding protein antibody, Crebbp antibody, Cyclic AMP responsive enhancer binding protein antibody, KAT3A antibody, RSTS antibody, RTS antibody, Rubinstein Taybi syndrome antibody

UniProt: [Q92793](#)

Pathways: [TCR Signaling](#), [Interferon-gamma Pathway](#), [Stem Cell Maintenance](#), [Chromatin Binding](#), [Regulation of Lipid Metabolism by PPARalpha](#)

Application Details

Application Notes: Recommended dilution: IHC:1:20-1:200, IF:1:50-1:200,

Restrictions: For Research Use only

Handling

Format: Liquid

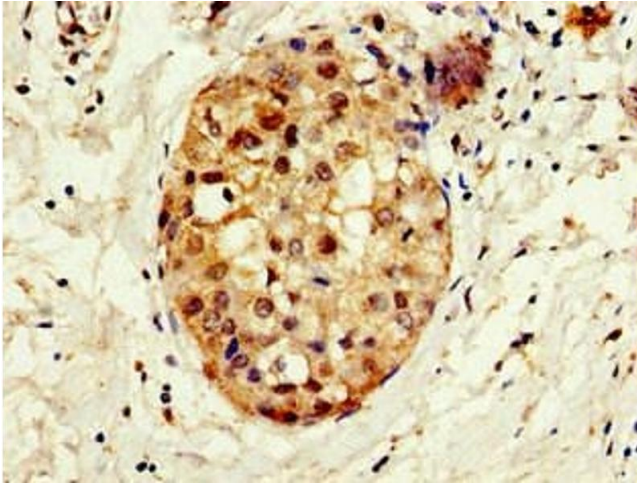
Buffer: Preservative: 0.03 % Proclin 300
Constituents: 50 % Glycerol, 0.01M PBS, pH 7.4

Preservative: ProClin

Precaution of Use: This product contains ProClin: a POISONOUS AND HAZARDOUS SUBSTANCE which should be handled by trained staff only.

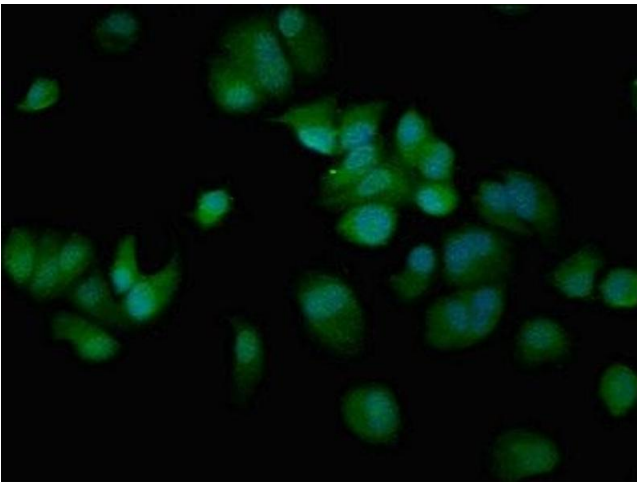
Storage: -20 °C,-80 °C

Storage Comment: Upon receipt, store at -20°C or -80°C. Avoid repeated freeze.



Immunohistochemistry

Image 1. Immunohistochemistry of paraffin-embedded human breast cancer using ABIN7148671 at dilution of 1:100



Immunofluorescence

Image 2. Immunofluorescent analysis of MCF-7 cells using ABIN7148671 at dilution of 1:100 and Alexa Fluor 488-conjugated AffiniPure Goat Anti-Rabbit IgG(H+L)