

Datasheet for ABIN7148675
anti-CRTC1 antibody (AA 1-248)

3 Images

[Go to Product page](#)

Overview

Quantity:	100 µg
Target:	CRTC1
Binding Specificity:	AA 1-248
Reactivity:	Human
Host:	Rabbit
Clonality:	Polyclonal
Conjugate:	This CRTC1 antibody is un-conjugated
Application:	Western Blotting (WB), ELISA, Immunohistochemistry (IHC), Immunofluorescence (IF)

Product Details

Immunogen:	Recombinant Human CREB-regulated transcription coactivator 1 protein (1-248AA)
Isotype:	IgG
Cross-Reactivity:	Human
Purification:	>95%, Protein G purified

Target Details

Target:	CRTC1
Alternative Name:	CRTC1 (CRTC1 Products)
Background:	Background: Transcriptional coactivator for CREB1 which activates transcription through both consensus and variant cAMP response element (CRE) sites. Acts as a coactivator, in the

Target Details

SIK/TORC signaling pathway, being active when dephosphorylated and acts independently of CREB1 Ser-133 phosphorylation. Enhances the interaction of CREB1 with TAF4. Regulates the expression of specific CREB-activated genes such as the steroidogenic gene, StAR. Potent coactivator of PGC1alpha and inducer of mitochondrial biogenesis in muscle cells. Also coactivator for TAX activation of the human T-cell leukemia virus type 1 (HTLV-1) long terminal repeats (LTR). In the hippocampus, involved in late-phase long-term potentiation (L-LTP) maintenance at the Schaffer collateral-CA1 synapses. May be required for dendritic growth of developing cortical neurons (By similarity). In concert with SIK1, regulates the light-induced entrainment of the circadian clock. In response to light stimulus, coactivates the CREB-mediated transcription of PER1 which plays an important role in the photic entrainment of the circadian clock.

Aliases: KIAA0616 antibody, CREB regulated transcription coactivator 1 antibody, CREB-regulated transcription coactivator 1 antibody, CRT1 antibody, CRT1_HUMAN antibody, FLJ14027 antibody, MECT 1 antibody, Mucoepidermoid carcinoma translocated 1 antibody, Mucoepidermoid carcinoma translocated protein 1 antibody, TORC-1 antibody, TORC1 antibody, Transducer of CREB protein 1 antibody, Transducer of regulated cAMP response element binding protein 1 antibody, Transducer of regulated cAMP response element-binding protein (CREB) 1 antibody, Transducer of regulated cAMP response element-binding protein 1 antibody, WAMTP1 antibody

UniProt: [Q6UUV9](#)

Application Details

Application Notes: Recommended dilution: WB:1:200-1:5000, IHC:1:20-1:200, IF:1:50-1:200,

Restrictions: For Research Use only

Handling

Format: Liquid

Buffer: Preservative: 0.03 % Proclin 300
Constituents: 50 % Glycerol, 0.01M PBS, pH 7.4

Preservative: ProClin

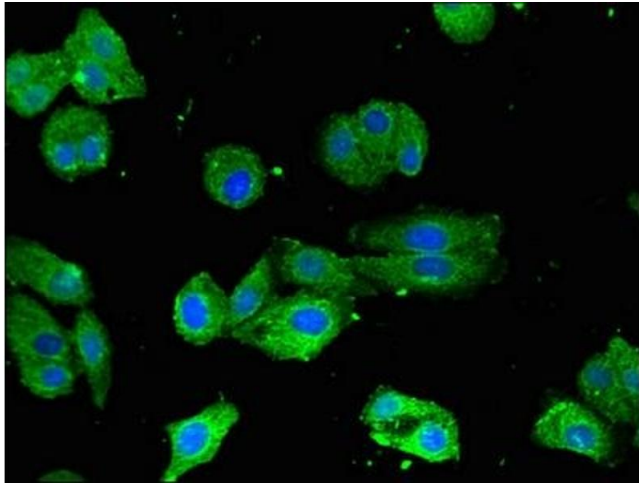
Precaution of Use: This product contains ProClin: a POISONOUS AND HAZARDOUS SUBSTANCE which should be handled by trained staff only.

Storage: -20 °C,-80 °C

Handling

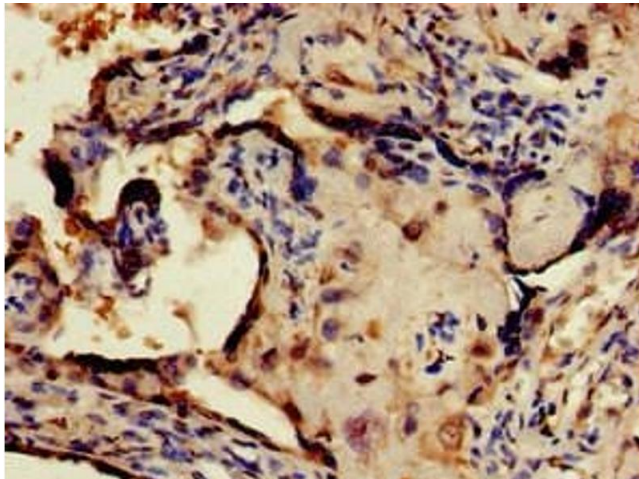
Storage Comment: Upon receipt, store at -20°C or -80°C. Avoid repeated freeze.

Images



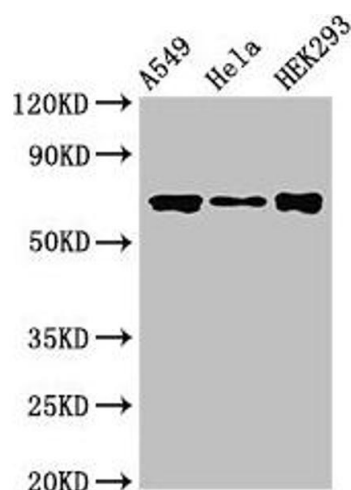
Immunofluorescence

Image 1. Immunofluorescent analysis of HepG2 cells using ABIN7148675 at dilution of 1:100 and Alexa Fluor 488-conjugated AffiniPure Goat Anti-Rabbit IgG(H+L)



Immunohistochemistry

Image 2. Immunohistochemistry of paraffin-embedded human placenta tissue using ABIN7148675 at dilution of 1:100



Western Blotting

Image 3. Western Blot Positive WB detected in: A549 whole cell lysate, HeLa whole cell lysate, HEK293 whole cell lysate. All lanes: CRTC1 antibody at 3.5 µg/mL. Secondary Goat polyclonal to rabbit IgG at 1/50000 dilution. Predicted band size: 68, 69, 63 kDa. Observed band size: 68 kDa.