

Datasheet for ABIN7148679
anti-CRTC2 antibody (AA 180-372)



[Go to Product page](#)

2 Images

Overview

Quantity:	100 µg
Target:	CRTC2
Binding Specificity:	AA 180-372
Reactivity:	Human
Host:	Rabbit
Clonality:	Polyclonal
Conjugate:	This CRTC2 antibody is un-conjugated
Application:	ELISA, Immunohistochemistry (IHC), Immunofluorescence (IF)

Product Details

Immunogen:	Recombinant Human CREB-regulated transcription coactivator 2 protein (180-372AA)
Isotype:	IgG
Cross-Reactivity:	Human
Purification:	>95%, Protein G purified

Target Details

Target:	CRTC2
Alternative Name:	CRTC2 (CRTC2 Products)
Background:	Background: Transcriptional coactivator for CREB1 which activates transcription through both consensus and variant cAMP response element (CRE) sites. Acts as a coactivator, in the

Target Details

SIK/TORC signaling pathway, being active when dephosphorylated and acts independently of CREB1 'Ser-133' phosphorylation. Enhances the interaction of CREB1 with TAF4. Regulates gluconeogenesis as a component of the LKB1/AMPK/TORC2 signaling pathway. Regulates the expression of specific genes such as the steroidogenic gene, StAR. Potent coactivator of PPARGC1A and inducer of mitochondrial biogenesis in muscle cells. Also coactivator for TAX activation of the human T-cell leukemia virus type 1 (HTLV-1) long terminal repeats (LTR).
Aliases: CREB regulated transcription coactivator 2 antibody, CREB-regulated transcription coactivator 2 antibody, CRTC2 antibody, CRTC2_HUMAN antibody, RP11-422P24.6 antibody, TORC-2 antibody, torc2 antibody, Transducer of CREB protein 2 antibody, Transducer of regulated cAMP response element-binding protein antibody, Transducer of regulated cAMP response element-binding protein (CREB) 2 antibody, Transducer of regulated cAMP response element-binding protein 2 antibody, Transducer of regulated CREB protein 2 antibody

UniProt: [Q53ET0](#)

Pathways: [AMPK Signaling](#), [Carbohydrate Homeostasis](#)

Application Details

Application Notes: Recommended dilution: IHC:1:20-1:200, IF:1:50-1:200,

Restrictions: For Research Use only

Handling

Format: Liquid

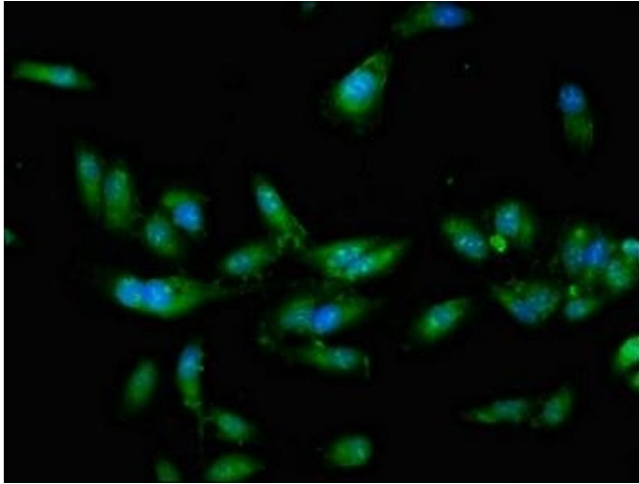
Buffer: Preservative: 0.03 % Proclin 300
Constituents: 50 % Glycerol, 0.01M PBS, pH 7.4

Preservative: ProClin

Precaution of Use: This product contains ProClin: a POISONOUS AND HAZARDOUS SUBSTANCE which should be handled by trained staff only.

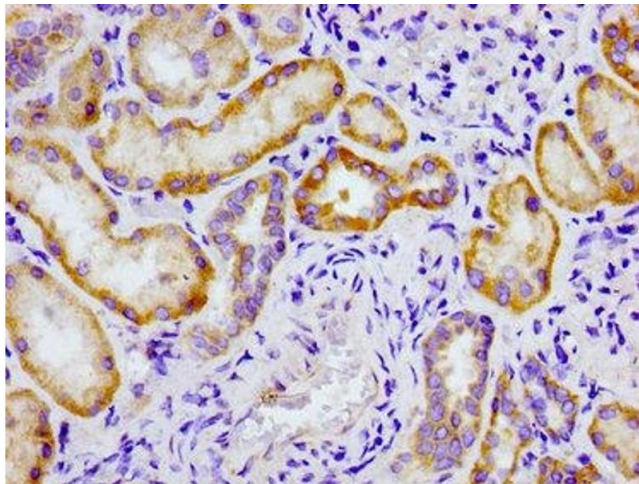
Storage: -20 °C,-80 °C

Storage Comment: Upon receipt, store at -20°C or -80°C. Avoid repeated freeze.



Immunofluorescence

Image 1. Immunofluorescent analysis of HeLa cells using ABIN7148679 at dilution of 1:100 and Alexa Fluor 488-conjugated AffiniPure Goat Anti-Rabbit IgG(H+L)



Immunohistochemistry

Image 2. Immunohistochemistry of paraffin-embedded human kidney tissue using ABIN7148679 at dilution of 1:100