

Datasheet for ABIN7148683  
**anti-CRTC3 antibody (AA 373-480)**



[Go to Product page](#)

2 Images

## Overview

Quantity:	100 µg
Target:	CRTC3
Binding Specificity:	AA 373-480
Reactivity:	Human
Host:	Rabbit
Clonality:	Polyclonal
Conjugate:	This CRTC3 antibody is un-conjugated
Application:	Immunohistochemistry (IHC), ELISA

## Product Details

Immunogen:	Recombinant Human CREB-regulated transcription coactivator 3 protein (373-480AA)
Isotype:	IgG
Cross-Reactivity:	Human
Purification:	>95%, Protein G purified

## Target Details

Target:	CRTC3
Alternative Name:	CRTC3 ( <a href="#">CRTC3 Products</a> )
Background:	Background: Transcriptional coactivator for CREB1 which activates transcription through both consensus and variant cAMP response element (CRE) sites. Acts as a coactivator, in the

## Target Details

SIK/TORC signaling pathway, being active when dephosphorylated and acts independently of CREB1 'Ser-133' phosphorylation. Enhances the interaction of CREB1 with TAF4. Regulates the expression of specific CREB-activated genes such as the steroidogenic gene, StAR. Potent coactivator of PPARGC1A and inducer of mitochondrial biogenesis in muscle cells. Also coactivator for TAX activation of the human T-cell leukemia virus type 1 (HTLV-1) long terminal repeats (LTR).

Aliases: CREB regulated transcription coactivator 3 antibody, CREB-regulated transcription coactivator 3 antibody, CRTC 3 antibody, CRTC3 antibody, CRTC3\_HUMAN antibody, FLJ21868 antibody, TORC 3 antibody, TORC-3 antibody, TORC3 antibody, Transducer of CREB protein 3 antibody, Transducer of regulated cAMP response element binding protein (CREB) 3 antibody, Transducer of regulated cAMP response element binding protein 3 antibody, Transducer of regulated cAMP response element-binding protein 3 antibody, Transducer of regulated CREB protein 3 antibody

UniProt: [Q6UUV7](#)

Pathways: [SARS-CoV-2 Protein Interactome](#), [The Global Phosphorylation Landscape of SARS-CoV-2 Infection](#)

## Application Details

Application Notes: Recommended dilution: IHC:1:500-1:1000,

Restrictions: For Research Use only

## Handling

Format: Liquid

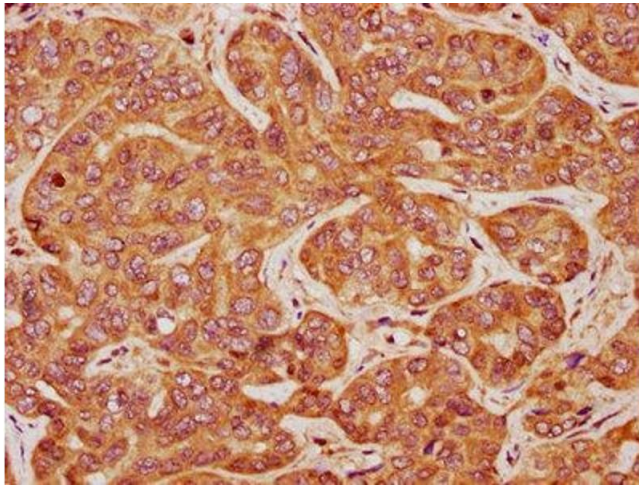
Buffer: Preservative: 0.03 % Proclin 300  
Constituents: 50 % Glycerol, 0.01M PBS, pH 7.4

Preservative: ProClin

Precaution of Use: This product contains ProClin: a POISONOUS AND HAZARDOUS SUBSTANCE which should be handled by trained staff only.

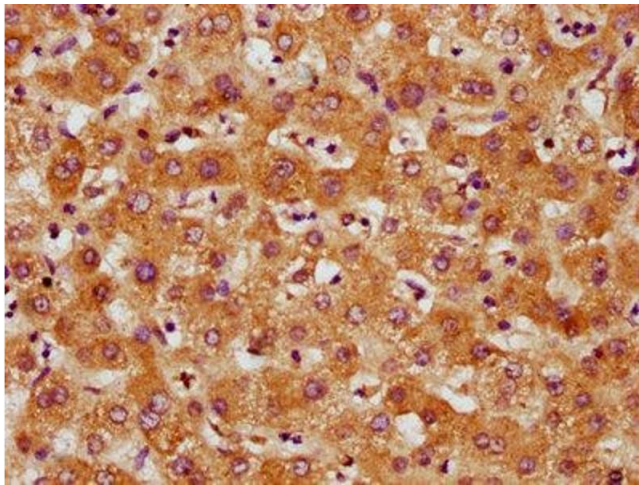
Storage: -20 °C,-80 °C

Storage Comment: Upon receipt, store at -20°C or -80°C. Avoid repeated freeze.



#### Immunohistochemistry

**Image 1.** IHC image of ABIN7148683 diluted at 1:500 and staining in paraffin-embedded human liver cancer performed on a Leica Bond™ system. After dewaxing and hydration, antigen retrieval was mediated by high pressure in a citrate buffer (pH 6.0). Section was blocked with 10 % normal goat serum 30 min at RT. Then primary antibody (1 % BSA) was incubated at 4 °C overnight. The primary is detected by a biotinylated secondary antibody and visualized using an HRP conjugated SP system.



#### Immunohistochemistry

**Image 2.** IHC image of ABIN7148683 diluted at 1:500 and staining in paraffin-embedded human liver tissue performed on a Leica Bond™ system. After dewaxing and hydration, antigen retrieval was mediated by high pressure in a citrate buffer (pH 6.0). Section was blocked with 10 % normal goat serum 30 min at RT. Then primary antibody (1 % BSA) was incubated at 4 °C overnight. The primary is detected by a biotinylated secondary antibody and visualized using an HRP conjugated SP system.