



[Go to Product page](#)

Datasheet for ABIN7148699

## anti-CRP antibody

### 2 Images

#### Overview

Quantity:	100 µg
Target:	CRP
Reactivity:	Human
Host:	Mouse
Clonality:	Monoclonal
Conjugate:	This CRP antibody is un-conjugated
Application:	ELISA, Immunohistochemistry (IHC)

#### Product Details

Immunogen:	Recombinant Human CRP Protein
Clone:	15E7B4
Isotype:	IgG
Cross-Reactivity:	Human
Purification:	Protein G purified

#### Target Details

Target:	CRP
Alternative Name:	CRP ( <a href="#">CRP Products</a> )
Background:	Background: "C-reactive protein (CRP) is an annular (ring-shaped), pentameric protein found in blood plasma, the levels of which rise in response to inflammation (i.e., C-reactive protein is an

## Target Details

---

acute-phase protein of hepatic origin that increases following interleukin-6 secretion from macrophages and T cells). Its physiological role is to bind to lysophosphatidylcholine expressed on the surface of dead or dying cells (and some types of bacteria) in order to activate the complement system via the C1Q complex. CRP is synthesized by the liver in response to factors released by macrophages and fat cells (adipocytes). It is a member of the pentraxin family of proteins. It is not related to C-peptide (insulin) or protein C (blood coagulation). C-reactive protein was the first pattern recognition receptor (PRR) to be identified."

Aliases: CRP

---

UniProt: [P02741](#)

---

Pathways: [Carbohydrate Homeostasis](#)

## Application Details

---

Application Notes: Recommended dilution:IHC:1:50-1:500,

---

Restrictions: For Research Use only

## Handling

---

Format: Liquid

---

Buffer: Preservative: 0.03 % Proclin 300  
Constituents: 50 % Glycerol, 0.01M PBS, PH 7.4

---

Preservative: ProClin

---

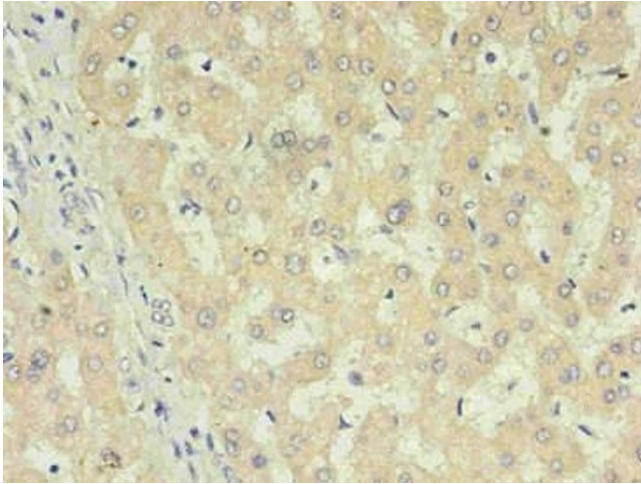
Precaution of Use: This product contains ProClin: a POISONOUS AND HAZARDOUS SUBSTANCE which should be handled by trained staff only.

---

Storage: -20 °C,-80 °C

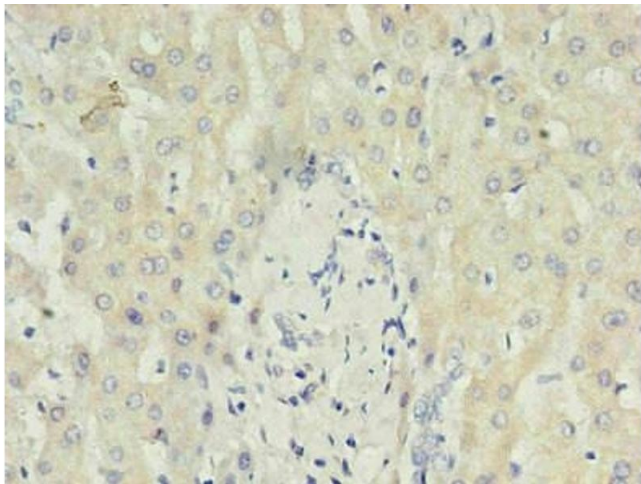
---

Storage Comment: Upon receipt, store at -20°C or -80°C. Avoid repeated freeze.



#### Immunohistochemistry

**Image 1.** Immunohistochemistry of paraffin-embedded human liver using in 30 µg/mL dilute concentrations.



#### Immunohistochemistry

**Image 2.** Immunohistochemistry of paraffin-embedded human liver using ABIN7148699 in 30 µg/mL dilute concentrations.