



[Go to Product page](#)

Datasheet for ABIN7148702

anti-TMEM63A antibody (AA 212-420)

1 Image

Overview

Quantity:	100 µg
Target:	TMEM63A
Binding Specificity:	AA 212-420
Reactivity:	Human
Host:	Rabbit
Clonality:	Polyclonal
Conjugate:	This TMEM63A antibody is un-conjugated
Application:	ELISA, Immunofluorescence (IF)

Product Details

Immunogen:	Recombinant Human CSC1-like protein 1 protein (212-420AA)
Isotype:	IgG
Cross-Reactivity:	Human
Purification:	>95%, Protein G purified

Target Details

Target:	TMEM63A
Alternative Name:	TMEM63A (TMEM63A Products)
Background:	Background: Acts as an osmosensitive calcium-permeable cation channel. Aliases: KIAA0489 antibody, KIAA0792 antibody, OTTHUMP00000035571 antibody, RP4

Target Details

559A3.1 antibody, TM63A_HUMAN antibody, Tmem63a antibody, Transmembrane protein 63A antibody

UniProt: [O94886](#)

Application Details

Application Notes: Recommended dilution: IF:1:50-1:200,

Restrictions: For Research Use only

Handling

Format: Liquid

Buffer: Preservative: 0.03 % Proclin 300
Constituents: 50 % Glycerol, 0.01M PBS, PH 7.4

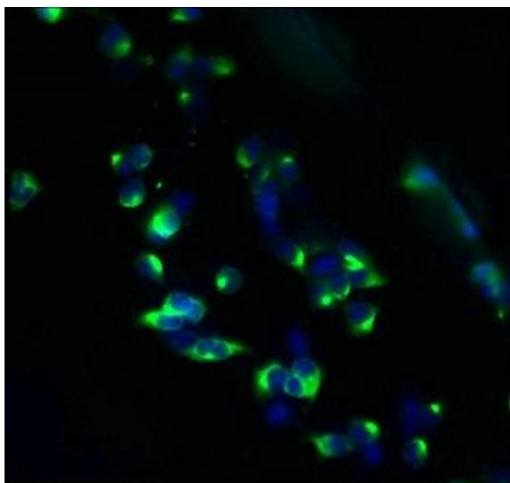
Preservative: ProClin

Precaution of Use: This product contains ProClin: a POISONOUS AND HAZARDOUS SUBSTANCE which should be handled by trained staff only.

Storage: -20 °C,-80 °C

Storage Comment: Upon receipt, store at -20°C or -80°C. Avoid repeated freeze.

Images



Immunofluorescence

Image 1. Immunofluorescent analysis of 293T cells using ABIN7148702 at dilution of 1:100 and Alexa Fluor 488-conjugated AffiniPure Goat Anti-Rabbit IgG(H+L)