

Datasheet for ABIN7148706
anti-CTAGE1 antibody (AA 471-595)[Go to Product page](#)

1 Image

Overview

Quantity:	100 µg
Target:	CTAGE1 (CTAGE)
Binding Specificity:	AA 471-595
Reactivity:	Human
Host:	Rabbit
Clonality:	Polyclonal
Conjugate:	This CTAGE1 antibody is un-conjugated
Application:	ELISA, Immunofluorescence (IF)

Product Details

Immunogen:	Recombinant Human cTAGE family member 2 protein (471-595AA)
Isotype:	IgG
Cross-Reactivity:	Human
Purification:	>95%, Protein G purified

Target Details

Target:	CTAGE1 (CTAGE)
Alternative Name:	CTAGE1 (CTAGE Products)
Background:	CTAGE1 antibody, CTAGE2cTAGE family member 2 antibody, Protein cTAGE-2 antibody, Cancer/testis antigen 21.2 antibody, CT21.2 antibody

Target Details

UniProt: [Q96RT6](#)

Application Details

Application Notes: Recommended dilution: IF:1:200-1:500,

Restrictions: For Research Use only

Handling

Format: Liquid

Buffer: Preservative: 0.03 % Proclin 300
Constituents: 50 % Glycerol, 0.01M PBS, pH 7.4

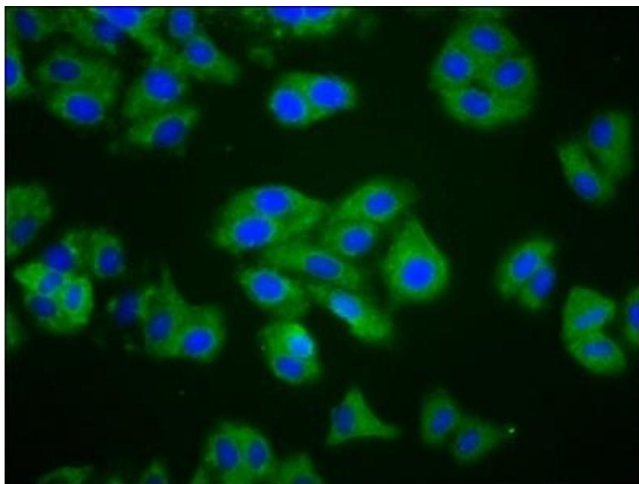
Preservative: ProClin

Precaution of Use: This product contains ProClin: a POISONOUS AND HAZARDOUS SUBSTANCE which should be handled by trained staff only.

Storage: -20 °C,-80 °C

Storage Comment: Upon receipt, store at -20°C or -80°C. Avoid repeated freeze.

Images



Immunofluorescence

Image 1. Immunofluorescence staining of HepG2 cells with ABIN7148706 at 1:200, counter-stained with DAPI. The cells were fixed in 4% formaldehyde, permeabilized using 0.2% Triton X-100 and blocked in 10% normal Goat Serum. The cells were then incubated with the antibody overnight at 4°C. The secondary antibody was Alexa Fluor 488-conjugated AffiniPure Goat Anti-Rabbit IgG(H+L).