



[Go to Product page](#)

Datasheet for ABIN7148710  
**anti-CTDNEP1A antibody (AA 3-244)**

2 Images

Overview

Quantity:	100 µg
Target:	CTDNEP1A
Binding Specificity:	AA 3-244
Reactivity:	Human
Host:	Rabbit
Clonality:	Polyclonal
Conjugate:	This CTDNEP1A antibody is un-conjugated
Application:	ELISA, Immunohistochemistry (IHC)

Product Details

Immunogen:	Recombinant Human CTD nuclear envelope phosphatase 1 protein (3-244AA)
Isotype:	IgG
Cross-Reactivity:	Human
Purification:	>95%, Protein G purified

Target Details

Target:	CTDNEP1A
Alternative Name:	CTDNEP1 ( <a href="#">CTDNEP1A Products</a> )
Background:	CTDNEP1 antibody, DULLARDCTD nuclear envelope phosphatase 1 antibody, EC 3.1.3.16 antibody, Serine/threonine-protein phosphatase dullard antibody

## Target Details

---

UniProt: [O95476](#)

## Application Details

---

Application Notes: Recommended dilution: IHC:1:20-1:200,

Restrictions: For Research Use only

## Handling

---

Format: Liquid

Buffer: Preservative: 0.03 % Proclin 300  
Constituents: 50 % Glycerol, 0.01M PBS, PH 7.4

Preservative: ProClin

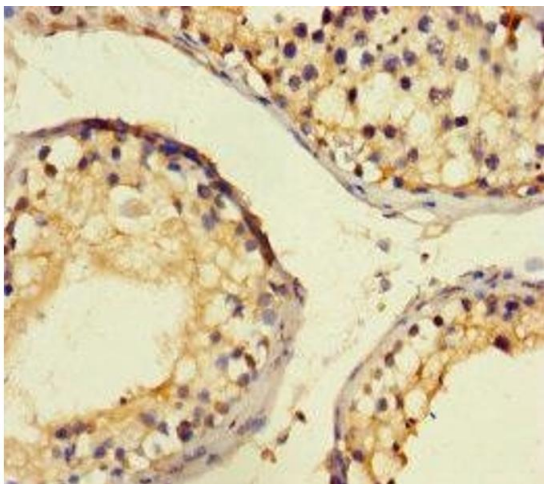
Precaution of Use: This product contains ProClin: a POISONOUS AND HAZARDOUS SUBSTANCE which should be handled by trained staff only.

Storage: -20 °C,-80 °C

Storage Comment: Upon receipt, store at -20°C or -80°C. Avoid repeated freeze.

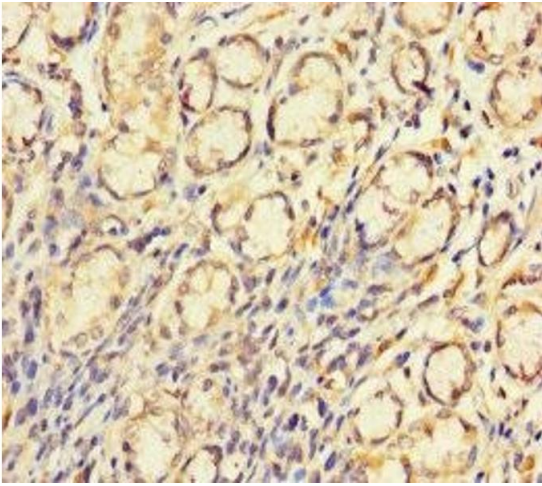
## Images

---



### Immunohistochemistry

**Image 1.** Immunohistochemistry of paraffin-embedded human testis tissue using ABIN7148710 at dilution of 1:100



### Immunohistochemistry

**Image 2.** Immunohistochemistry of paraffin-embedded human gastric cancer using ABIN7148710 at dilution of 1:100