

Datasheet for ABIN7148714  
**anti-CTP Synthase antibody (AA 300-554)**



[Go to Product page](#)

3 Images

### Overview

Quantity:	100 µg
Target:	CTP Synthase (CTPS)
Binding Specificity:	AA 300-554
Reactivity:	Human
Host:	Rabbit
Clonality:	Polyclonal
Conjugate:	This CTP Synthase antibody is un-conjugated
Application:	Western Blotting (WB), ELISA, Immunohistochemistry (IHC)

### Product Details

Immunogen:	Recombinant Human CTP synthase 1 protein (300-554AA)
Isotype:	IgG
Cross-Reactivity:	Human
Purification:	>95%, Protein G purified

### Target Details

Target:	CTP Synthase (CTPS)
Alternative Name:	CTPS1 ( <a href="#">CTPS Products</a> )
Background:	Background: This enzyme is involved in the de novo synthesis of CTP, a precursor of DNA, RNA and phospholipids. Catalyzes the ATP-dependent amination of UTP to CTP with either L-

## Target Details

glutamine or ammonia as a source of nitrogen. This enzyme and its product, CTP, play a crucial role in the proliferation of activated lymphocytes and therefore in immunity.

Aliases: CTPS1 antibody, CTPS antibody, CTP synthase 1 antibody, EC 6.3.4.2 antibody, CTP synthetase 1 antibody, UTP--ammonia ligase 1 antibody

UniProt: [P17812](#)

Pathways: [Proton Transport](#), [Ribonucleoside Biosynthetic Process](#)

## Application Details

Application Notes: Recommended dilution: WB:1:500-1:5000, IHC:1:20-1:200,

Restrictions: For Research Use only

## Handling

Format: Liquid

Buffer: Preservative: 0.03 % Proclin 300  
Constituents: 50 % Glycerol, 0.01M PBS, PH 7.4

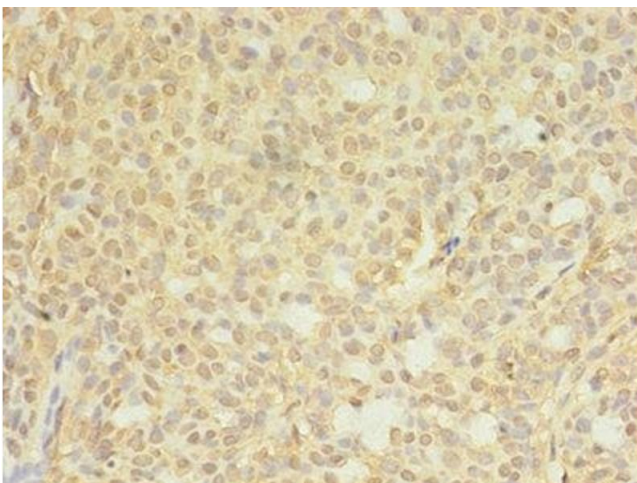
Preservative: ProClin

Precaution of Use: This product contains ProClin: a POISONOUS AND HAZARDOUS SUBSTANCE which should be handled by trained staff only.

Storage: -20 °C,-80 °C

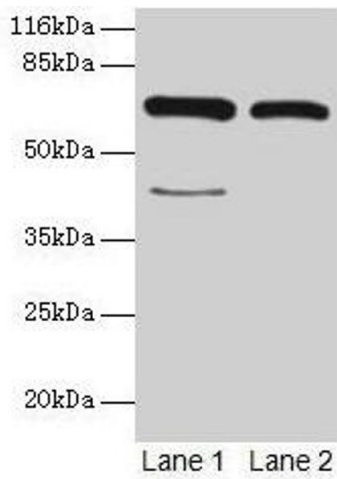
Storage Comment: Upon receipt, store at -20°C or -80°C. Avoid repeated freeze.

## Images



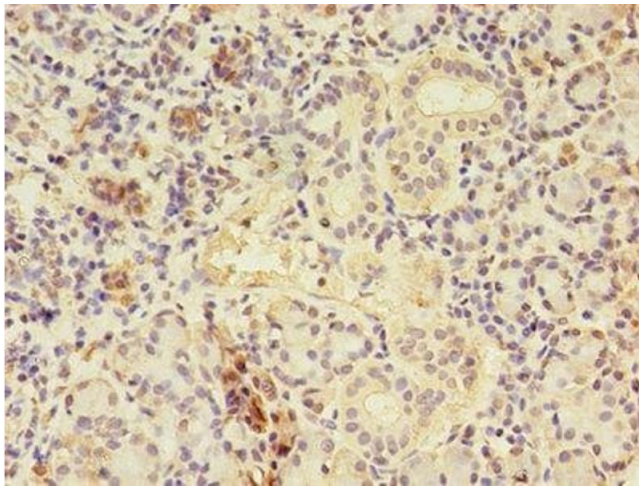
### Immunohistochemistry

**Image 1.** Immunohistochemistry of paraffin-embedded human breast cancer using ABIN7148714 at dilution of 1:100



### Western Blotting

**Image 2.** Western blot All lanes: CTPS1 antibody at 6 µg/mL  
Lane 1: Hela whole cell lysate Lane 2: 293T whole cell lysate  
Secondary Goat polyclonal to rabbit IgG at 1/10000 dilution  
Predicted band size: 67, 42 kDa Observed band size: 67 kDa



### Immunohistochemistry

**Image 3.** Immunohistochemistry of paraffin-embedded human pancreatic tissue using ABIN7148714 at dilution of 1:100