



Datasheet for ABIN7148718
anti-CTPS2 antibody (AA 62-315)



[Go to Product page](#)

4 Images

Overview

Quantity:	100 µg
Target:	CTPS2
Binding Specificity:	AA 62-315
Reactivity:	Human
Host:	Rabbit
Clonality:	Polyclonal
Conjugate:	This CTPS2 antibody is un-conjugated
Application:	Western Blotting (WB), ELISA, Immunohistochemistry (IHC), Immunoprecipitation (IP)

Product Details

Immunogen:	Recombinant Human CTP synthase 2 protein (62-315AA)
Isotype:	IgG
Cross-Reactivity:	Human
Purification:	>95%, Protein G purified

Target Details

Target:	CTPS2
Alternative Name:	CTPS2 (CTPS2 Products)
Background:	Background: Catalyzes the ATP-dependent amination of UTP to CTP with either L-glutamine or ammonia as the source of nitrogen. Constitutes the rate-limiting enzyme in the synthesis of

Target Details

cytosine nucleotides.

Aliases: CTP synthase 2 antibody, CTP synthase II antibody, CTP synthetase 2 antibody, CTPS2 antibody, CYTIDINE 5 PRIME TRIPHOSPHATE SYNTHETASE 2 antibody, FLJ43358 antibody, MGC32997 antibody, PYRG2_HUMAN antibody, UTP--ammonia ligase 2 antibody

UniProt: [Q9NRF8](#)

Pathways: [Ribonucleoside Biosynthetic Process](#)

Application Details

Application Notes: Recommended dilution: WB:1:500-1:5000, IHC:1:20-1:200, IP:1:200-1:2000,

Restrictions: For Research Use only

Handling

Format: Liquid

Buffer: Preservative: 0.03 % Proclin 300
Constituents: 50 % Glycerol, 0.01M PBS, PH 7.4

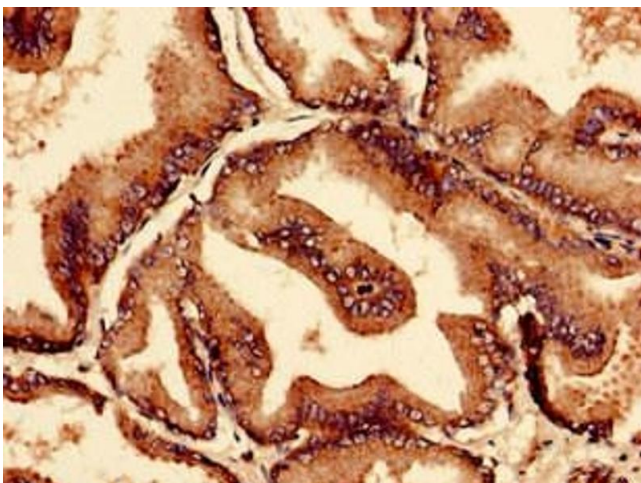
Preservative: ProClin

Precaution of Use: This product contains ProClin: a POISONOUS AND HAZARDOUS SUBSTANCE which should be handled by trained staff only.

Storage: -20 °C,-80 °C

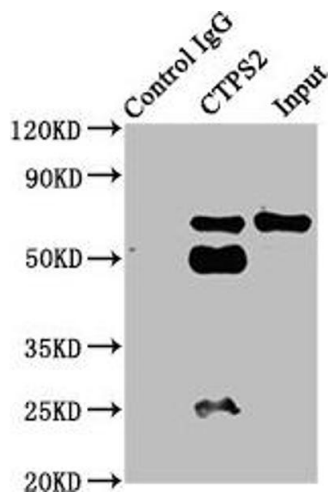
Storage Comment: Upon receipt, store at -20°C or -80°C. Avoid repeated freeze.

Images



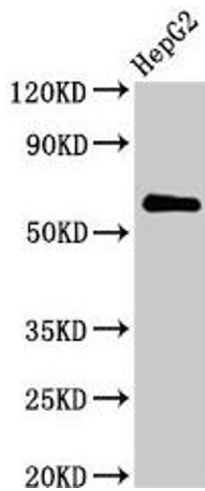
Immunocytochemistry

Image 1. Immunocytochemistry analysis of human prostate tissue using ABIN7148718 at dilution of 1:100



Western Blotting

Image 2. Immunoprecipitating CTPS2 in HepG2 whole cell lysate Lane 1: Rabbit control IgG instead of ABIN7148718 in HepG2 whole cell lysate. For western blotting, a HRP-conjugated Protein G antibody was used as the secondary antibody (1/2000) Lane 2: ABIN7148718 (6 µg) + HepG2 whole cell lysate (500 µg) Lane 3: HepG2 whole cell lysate (20 µg)



Western Blotting

Image 3. Western Blot Positive WB detected in: HepG2 whole cell lysate All lanes: CTPS2 antibody at 2.8 µg/mL Secondary Goat polyclonal to rabbit IgG at 1/50000 dilution Predicted band size: 66 kDa Observed band size: 66 kDa

Please check the [product details page](#) for more images. Overall 4 images are available for ABIN7148718.